



BVA[®]

HYDRAULICS



BUILT TO LAST

2010



4 Single Acting Cylinders



6 Aluminium Cylinders



7 Lock-Nut Cylinders



8 Flat Body Cylinders



9 Flat Body Cylinder Kits



10 Low Profile Cylinders



11 Low Profile Cylinder Kit



12 Threaded Cylinders



13 Pull Cylinders



14 Hollow Cylinders



15 Double Acting Hollow Cylinders



16 Double Acting Cylinders



17 Double Acting High Precision Cylinders



18 Hydraulic Hand Pumps



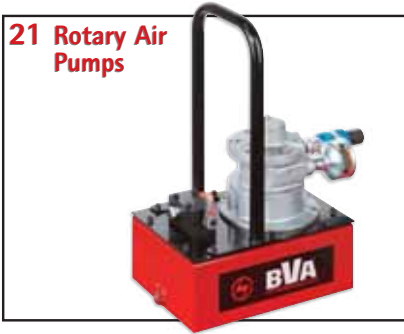
19 Hydraulic Hand Pumps (Manual Control Valve)



20 Air Hydraulic Pumps



21 Rotary Air Pumps



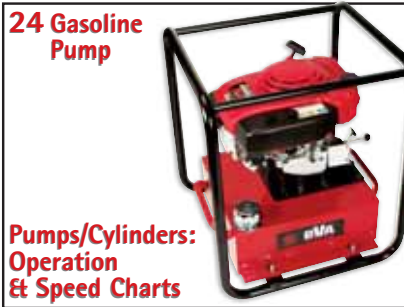
22 Electric Pumps



23 Electric Pumps With Solenoid Valve



24 Gasoline Pump



**Pumps/Cylinders:
Operation
& Speed Charts**

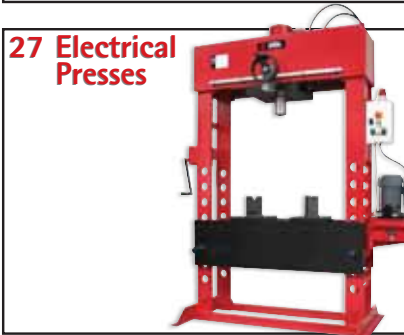
**25 Mini Jacks
Toe Jacks &
Spreaders**



26 Presses



27 Electrical Presses



28 Cutters



29 Hydraulic Accessories & Hoses



30 Manifolds, Gauges & Fittings



31 Valves



**32 Pump Mounted Manifold
Block & Remote Valves**



33 Cylinder Accessories



34 Fittings





Single Acting Cylinders

- Heavy Duty Return Spring for quicker retraction.
- Solid steel cylinder body.

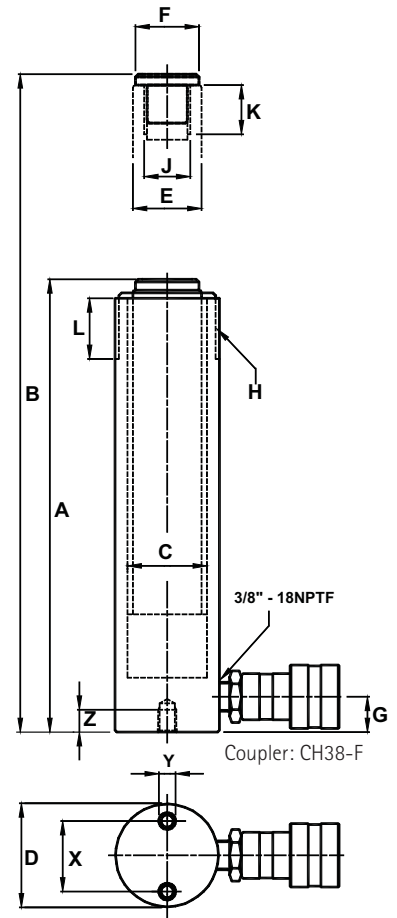
Model Number	Stroke (mm)	A		B		Oil Capacity (cc)	Weight (Kg)
		Min. Height (mm)	Max. Height (mm)	Min. Height (mm)	Max. Height (mm)		
CYLINDER CAPACITY: 5 TON = 45 kN							
H0501	26	116	142	16	1.4		
H0503	78	169	247	50	1.6		
H0505	129	221	350	83	2.1		
H0507	180	272	452	116	2.3		
H0509	231	323	554	149	2.5		
CYLINDER CAPACITY: 10 TON = 101 kN							
H1001	25	92	117	36	1.8		
H1002	51	123	174	73	2.3		
H1004	102	174	276	147	3.1		
H1006	151	250	401	218	4.3		
H1008	202	301	503	291	5.4		
H1010	253	352	605	365	6.4		
H1012	305	403	707	438	6.8		
H1014	356	450	806	514	7.5		
CYLINDER CAPACITY: 15 TON = 142 kN							
H1501	25	124	149	51	3.3		
H1502	51	149	200	103	3.9		
H1504	101	200	301	204	5.1		
H1506	152	270	422	308	7.0		
H1508	203	321	524	411	8.0		
H1510	254	372	626	515	9.3		
H1512	305	423	728	618	10.9		
H1514	356	474	830	721	11.8		
H1516	407	529	936	824	12.8		
CYLINDER CAPACITY: 25 TON = 232 kN							
H2501	26	143	169	86	6.1		
H2502	51	168	219	169	6.6		
H2504	102	219	321	338	8.7		
H2506	155	272	427	514	10.5		
H2508	206	323	529	683	12.3		
H2510	257	374	631	852	14.0		
H2512	310	426	736	1028	15.3		
H2514	362	476	838	1201	17.7		
CYLINDER CAPACITY: 30 TON = 287 kN							
H3008	210	387	599	879	18.5		
CYLINDER CAPACITY: 50 TON = 496 kN							
H5502	51	176	227	361	15.5		
H5504	101	227	328	715	19.3		
CYLINDER CAPACITY: 50 TON = 496 kN (INCL. 2 CARRY HANDLES)							
H5506	158	283	441	1119	23.5		
H5510	260	384	644	1845	34.0		
H5513	337	461	798	2388	36.8		
CYLINDER CAPACITY: 75 TON = 726 kN (INCL. 2 CARRY HANDLES)							
H7506	156	285	441	1620	30.6		
H7513	333	492	825	3458	52.4		
CYLINDER CAPACITY: 100 TON = 928 kN (INCL. 2 CARRY HANDLES)							
H10002	51	219	270	677	31.5		
H10006	168	357	525	2229	52.4		
H10010	260	449	709	3451	68.7		

High Tonnage Cylinders up to 1000 Ton available on Request!



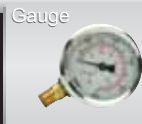


SINGLE ACTING CYLINDERS



Model Number	Capacity kN	Cylinder Effective Area (cm ²)	C	D	E	F	G	H	L	J	K	Base Mounting Hole		
			Bore Ø (mm)	Outside Ø (mm)	Plunger Ø (mm)	Saddle Ø (mm)	Collar Base to Inlet Port (mm)	Plunger Collar Thread	Plunger Thread Length (mm)	Internal Length	Thread Length (mm)	Bolt Circle (mm)	Thread	Thread Depth (mm)
5 Ton	45	6.4	29	38	25	25	20	1 1/2"-16UN	28	3/4"-16UNF	16	25	1/4"-20UNC	14
H1001	101	14.5	43	57	38	N/A	20	2 1/4"-14UNC	29	10-24UNC	6	40	5/16"-18UNC	14
10 Ton	101	14.5	43	57	38	35	20	2 1/4"-14UNC	29	1"-8UNC	20	40	5/16"-18UNC	14
15 Ton	142	20.3	51	70	41	38	25	2 3/4"-16UN	30	1"-8UNC	25	48	3/8"-16UNC	13
25 Ton	232	33.2	65	85	57	50	25	3 5/16"-12UN	49	1 1/2"-16	30	59	1/2"-13UNC	19
30 Ton	287	41.9	73	102	57	50	50	3 5/16"-12UN	49	1 1/2"-16	30	N/A	N/A	N/A
50 Ton	496	70.8	95	127	80	70	31	5"-12UN	55	N/A	N/A	95	1/2"-13UCN	19
75 Ton	726	103.9	115	147	95	70	30	5 3/4"-12UN	44	N/A	N/A	N/A	N/A	N/A
H10002	928	132.7	130	159	105	70	38	6 1/4"-12UN	57	N/A	N/A	N/A	N/A	N/A
100 Ton	928	132.7	130	177	105	70	40	6 7/8"-12UN	44	N/A	N/A	140	3/4"-10UNC	25

Accessories





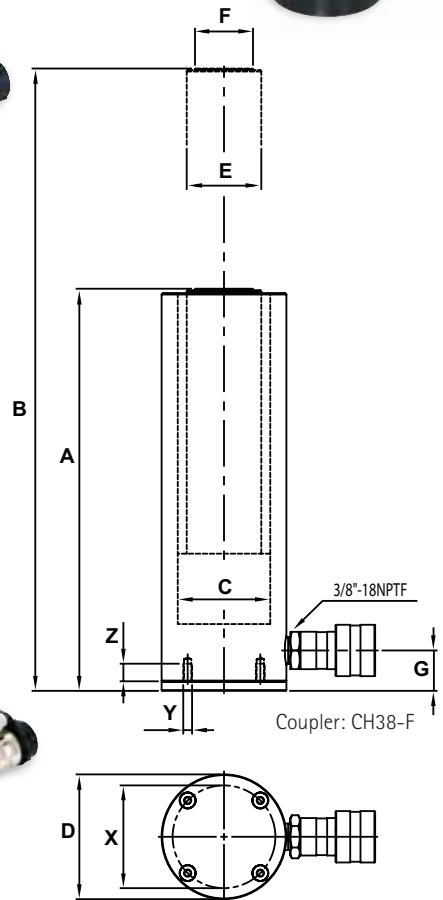
ALUMINIUM CYLINDERS

Aluminium Cylinders

- Heavy Duty Return Spring for quicker retraction.
- Light weight for easy handling.
- Hard anodized surface.



Model Number	Stroke (mm)	A	B	Oil Capacity (cc)	Weight (Kg)
		Min. Height (mm)	Max. Height (mm)		
CYLINDER CAPACITY: 20 Ton = 218 kN					
HU2002	50	174	224	155	3.0
HU2004	100	224	324	311	3.7
HU2006	150	274	424	467	4.4
CYLINDER CAPACITY: 30 Ton = 309 kN					
HU3002	50	181	231	220	4.7
HU3004	100	231	331	441	5.4
HU3006	150	281	431	662	6.1
CYLINDER CAPACITY: 50 Ton = 496 kN					
HU5502	50	186	236	354	8.9
HU5504	100	236	336	708	10.3
HU5506	150	286	436	1063	11.6
HU5508	200	336	536	1417	12.9
HU5510	250	386	636	1772	14.2
CYLINDER CAPACITY: 100 Ton = 929 kN					
HU10004	100	271	371	1327	19.8
HU10006	150	321	471	1990	22.1
HU10008	200	371	571	2654	24.4
CYLINDER CAPACITY: 150 Ton = 1589 kN					
HU15006	150	343	493	3404	33.5

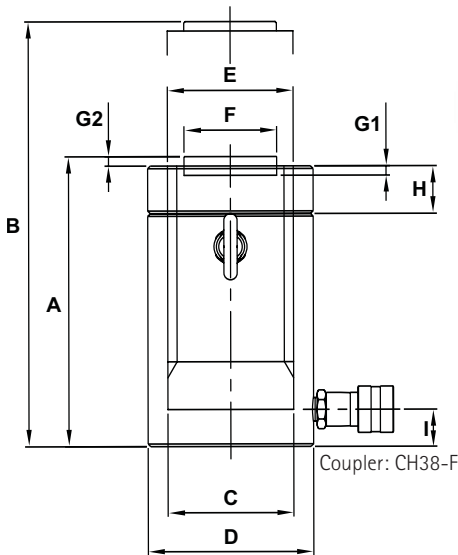


Model Number	Capacity (kN)	Cylinder Effective Area (cm ²)	C	D	E	F	G	Base Mounting Hole		
			Bore Ø (mm)	Outside Ø (mm)	Plunger Ø (mm)	Saddle Ø (mm)	Collar Base to Inlet Port (mm)	Bolt Circle (mm)	Thread	Thread Depth (mm)
20 Ton	218	31.17	63	85	50.8	39.5	27.5	70	M6	12
30 Ton	309	44.18	75	100	60	39.5	33.5	80	M6	12
50 Ton	496	70.88	95	130	80	70	30.5	110	M6	12
100 Ton	929	132.73	130	180	109.9	70	46.5	160	M6	12
150 Ton	1589	226.98	170	230	140	113	51.5	200	M6	12



Lock-nut Cylinders

- Can support the load for a long period of time.
- The lock nut can be adjusted at any point on the stroke of the cylinder to lock the load off.
- Ram and inside housing are nickel plated to prevent rust and corrosion.
- Two overflow ports in the support rings to avoid over extension of the ram.
- Colour indicator to alert the operator of maximum stroke level.
- Maximum working pressure: 700 bar (10,000 psi).



Model Number	Stroke (mm)	A		B		Oil Capacity (cc)	Weight (Kg)
		Min. Height (mm)	Max. Height (mm)	Min. Height (mm)	Max. Height (mm)		
CYLINDER CAPACITY: 50 TON = 496 kN (INCL. 2 LIFTING EYES)							
HLN5502	50	164	214	354	15.4		
HLN5504	100	214	314	709	20.2		
HLN5506	150	264	414	1063	25.0		
HLN5508	200	314	514	1418	29.9		
HLN5510	250	364	614	1772	34.7		
HLN5512	300	414	714	2127	39.5		
CYLINDER CAPACITY: 95 TON = 929 kN (INCL. 2 LIFTING EYES)							
HLN10002	50	187	237	663	30.5		
HLN10004	100	237	337	1327	38.9		
HLN10006	150	287	437	1990	47.3		
HLN10008	200	337	537	2654	55.6		
HLN10010	250	387	637	3317	64.0		
HLN10012	300	437	737	3981	72.4		

High Tonnage Cylinders up to 1000 Ton available on Request!

Model Number	Capacity kN	Cylinder Effective Area (cm ²)	C	D	E	F	G (=G1+G2)	G1	G2	H	I
			Bore Ø (mm)	Outside Ø (mm)	Plunger Ø (mm)	Saddle Ø (mm)	Plunger Saddle Depth (mm)	Plunger Saddle Depth (mm)	Plunger Saddle Depth (mm)	Lock Nut Length (mm)	Base to Inlet Port (mm)
50 Ton	496	70.9	95	125	Tw95-6N	70	15	13	2	36	28
100 Ton	929	132.7	130	165	Tw130-4N	70	15	13	2	45	28

Accessories





FLAT BODY CYLINDERS

Flat Body Cylinders

- Body made of high quality solid steel.
- Extremely low design for use in confined spaces where standard cylinders will not fit.
- Maximum working pressure: 700 bar (10,000 psi).



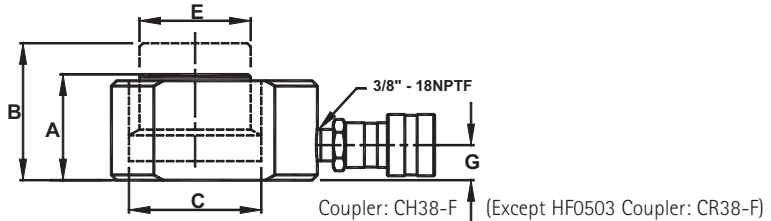
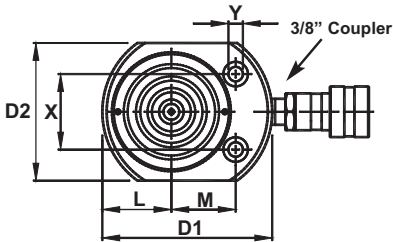
HF0503
Coupler: CR38-F

Incl. 1 Carry Handle

- 75, 100 and 150 Ton Flat Body Cylinders are equipped with a Carrying Handle.



Model Number	Stroke (mm)	A	B	Oil Capacity (cc)	Weight (Kg)
		Min. Height (mm)	Max. Height (mm)		
CYLINDER CAPACITY: 5 Ton = 49 kN					
HF0500	16	41	57	11	0.9
CYLINDER CAPACITY: 5 Ton = 49 kN 3/8" COUPLER REGULAR FLOW					
HF0503	6	32	38	4	0.6
CYLINDER CAPACITY: 10 Ton = 104 kN					
HF1005	11	43	54	16	1.5
CYLINDER CAPACITY: 20 Ton = 194 kN					
HF2005	11	51	62	31	2.7
CYLINDER CAPACITY: 30 Ton = 287 kN					
HF3005	13	59	71	54	4.4
CYLINDER CAPACITY: 50 Ton = 445 kN					
HF5006	16	67	83	101	6.7
CYLINDER CAPACITY: 75 Ton = 727 kN (INCL. HANDLE)					
HF7506	16	79	95	166	11.5
CYLINDER CAPACITY: 100 Ton = 887 kN (INCL. HANDLE)					
HF10006	16	85	101	202	14.3
CYLINDER CAPACITY: 150 Ton 1385 kN (INCL. HANDLE)					
HF15006	16	100	116	316	24.2



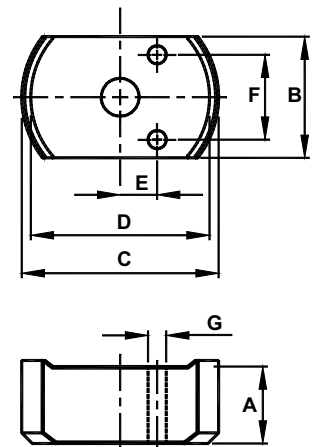
Model Number	Capacity kN	Cylinder Effective Area (cm ²)	C	D1 x D2	E	G	L	M	Cylinder Mounting Hole Dimensions			
									Cylinder Bore Ø (mm)	Outside Dim. (mm)	Plunger Ø (mm)	Base to Port (mm)
HF0500	49	7.1	30	60 x 40	25	19	20	22	28	5	10	6
HF0503	49	7.1	30	61 x 41	25	18	20	22	28	5	10	6
HF1005	104	15.2	44	84 x 56	38	20	28	34	37	7	10	10
HF2005	194	28.3	60	102 x 76	51	19	39	40	49	10	15	10
HF3005	287	41.9	73	117 x 97	64	20	48	45	52	10	16	11
HF5006	445	63.6	90	140 x 114	70	20	57	54	67	11	19	13
HF7506	727	103.9	115	165 x 140	90	20	70	67	76	13	21	14
HF10006	887	126.7	127	177 x 152	90	20	76	75	76	13	21	14
HF15006	1385	197.9	158	215 x 190	118	24	95	83	117	13	21	14

Flat Body Cylinder Kits

- Magnetic adapters in various heights.
- Carrying case.
- Perfect for additional packing in height restricted situations.



HF0503



Model Number	Cylinder Model	Capacity kN	Stroke (mm)	Oil Capacity (cc)	Min. Height (mm)	Adapter	A	B	C	D	E	F	G	Weight (kg)
							Adapter Dimensions (mm)							
CYLINDER CAPACITY: 5 TON = 49 kN														
HF0503B	HF0503	49	6	4	32	I	6	41	65	59	12	28	6	2.6
						II	13							
						III	25							
						IV	32							
CYLINDER CAPACITY: 10 TON = 104 kN														
HF1005B	HF1005	104	11	16	43	I	10	56	90	82	21	37	7	3.9
						II	20				N/A			
						III	40							
CYLINDER CAPACITY: 20 TON = 194 kN														
HF2005B	HF2005	194	11	31	51	I	10	76	108	100	27	49	10	7.0
						II	20				N/A			
						III	40							
CYLINDER CAPACITY: 30 TON = 287 kN														
HF3005B	HF3005	287	13	54	59	I	10	95	121	113	34	52	10	9.4
						II	20				N/A			
						III	40							

Accessories

Fitting



Hose



Gauge



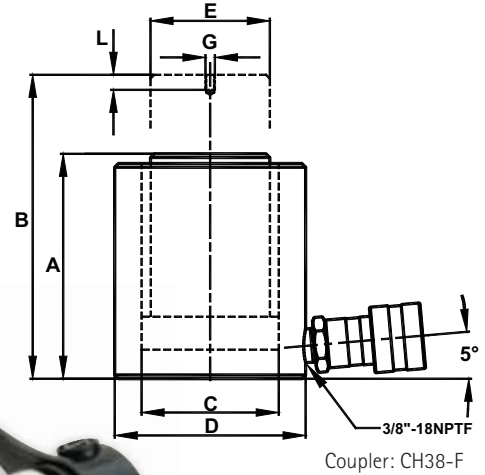
Hand Pump





Low Profile Cylinders

- Compact design for use in confined spaces.
- Plunger wiper reduces contamination and extends the cylinder-life.
- Specially designed return spring ensures a quick retraction and extends the life of the spring.
- Industrial hard chrome plated ram helps to prevent scratching and corrosion.
- Plunger end is grooved to reduce load slipping.
- Includes high flow ball coupler and dust cap.
- HL1001, HL2002 and HL3002 coupler is tilted upward for added clearance.
- Maximum working pressure: 700 bar (10,000 psi).



Model Number	Stroke (mm)	A	B	Oil Capacity (cc)	Weight (Kg)
		Min. Height (mm)	Max. Height (mm)		
CYLINDER CAPACITY: 10 TON = 106 kN					
HL1001	38.0	88	126	58	2.6
CYLINDER CAPACITY: 20 TON = 198 kN					
HL2002	44.5	99	144	126	5.0
CYLINDER CAPACITY: 30 TON = 293 kN					
HL3002	62.0	117	179	259	6.8
CYLINDER CAPACITY: 45 TON = 445 kN					
HL5002	60.0	122	182	381	9.9
CYLINDER CAPACITY: 90 TON = 887 kN					
HL10002	57.0	141	198	722	20.6

Model Number	Capacity kN	Cylinder Effective Area (cm ²)	C	D	E	G	L	M
			Cylinder Bore Ø (mm)	Outside Ø (mm)	Plunger Ø (mm)	Thread (mm)	Thread Depth (mm)	Bolt Circle (mm)
HL1001	106	15.2	44	70	38	M4	8	26
HL2002	198	28.3	60	92	51	M5	8	40
HL3002	293	41.8	73	102	63	M5	8	40
HL5002	445	63.6	90	124	70	M5	8	40
HL10002	887	126.7	127	165	90	M8	10	56



Low Profile Cylinder Kit

- Remove truck wheel with the mini-press.
- Fits between chassis and wheel.



MINI-PRESS



**AN APPLICATION:
PRESS TRUCK WHEEL
FROM NAVE WITH THE
MINI-PRESS.**

**Fits between
chassis and wheel.**

HL-1001-D



MINI-PRESS HL1001 ADAPTERS

Capacity: 10 TON
Minimum Height: 88mm
Stroke: 38mm



3 aluminium adapters:
25mm, 50mm en 75mm.



Metal end-part.
Height 10mm.



10mm + 88mm
(98mm)



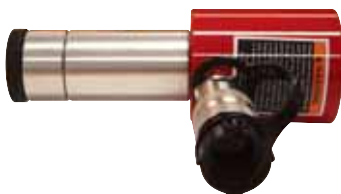
10mm + 25mm + 88mm
(123mm)



10mm + 50mm + 88mm
(148mm)



10mm + 75mm + 88mm
(172mm)



10mm + 25mm + 75mm + 88mm
(198mm)



10mm + 50mm + 75mm + 88mm
(223mm)



10mm + 25mm + 50mm + 75mm + 88mm
(248mm)

Model Number	Capacity kN	Cylinder Effective Area (cm ²)	Internal Pressure at Capacity (bar)	C	D	E	G	L	M
				Cylinder Bore Ø (mm)	Outside Ø (mm)	Plunger Ø (mm)	Thread (mm)	Thread Depth (mm)	Bolt Circle (mm)
CYLINDER CAPACITY: 10 TON = 106 kN									
HL1001	106	15	587	44	70	38	M4	8	26

Accessories

Fitting



Hose



Gauge



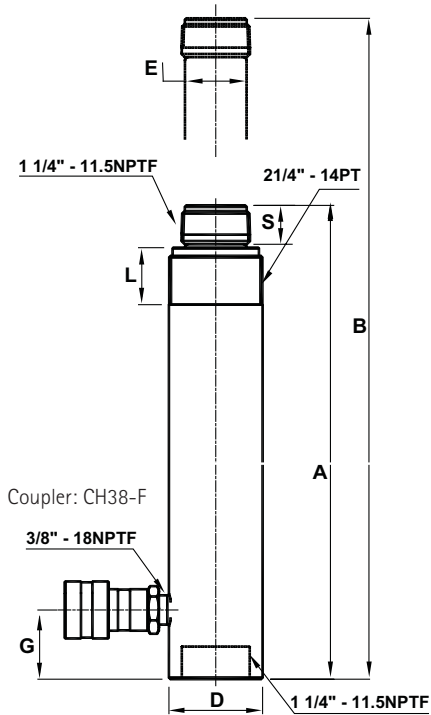
Hand Pump





Threaded Cylinders

- High quality threaded single acting cylinders.
- Removable threaded plunger adapter allows the use of a variety of threaded attachments.
- Used to attach accessories to rod end and base.
- Maximum working pressure: 700 bar (10,000 psi).



Model Number	Stroke (mm)	A		Oil Capacity (cc)	Weight (Kg)
		Min. Height (mm)	Max. Height (mm)		
CYLINDER CAPACITY: 10 TON = 101 kN					
HT1006	151	291	442	217	4.8
HT1010	253	392	646	365	6.4

High Tonnage Cylinders up to 100 Ton available on Request!

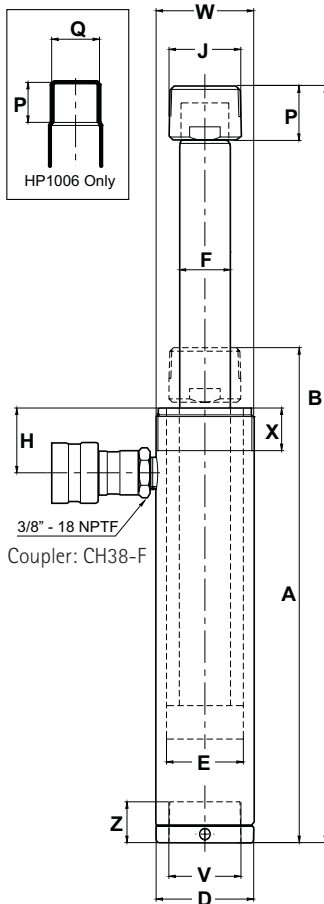
Model Number	Capacity kN	Cylinder Effective Area (cm ²)	D	E	G	L	S
			Outside Ø (mm)	Plunger Ø (mm)	Base to Inlet Port (mm)	Collar Thread Length (mm)	Saddle Height (mm)
10 Ton	101	14.4	57	38	42	29	27



PULL CYLINDERS

Pull Cylinders

- High strength steel construction.
- Guide ring is designed to help protect against side-load damage.
- High lifecycle polyurethane seal.
- External plunger threads.
- Internal base thread for easy attachment.



HP1006
(Clevis CP10: Optional)



HP0205



HP0505

High Tonnage Cylinders up to 60 Ton available on Request!

Model Number	Stroke (mm)	A	B	Oil Capacity (cc)	Weight (Kg)
		Min. Height (mm)	Max. Height (mm)		
CYLINDER CAPACITY: 2.5 TON = 25 kN					
HP0205	127	267	394	45	2.9
CYLINDER CAPACITY: 5 TON = 51 kN					
HP0505	141	303	444	103	4.2
CYLINDER CAPACITY: 10 TON = 110 kN					
HP1006	151	299	450	237	9.5

Model Number	Capacity kN	Cylinder Effective Area (cm ²)	D	E	F	H	J	P	Q	Base Mounting Hole			
			Outside Ø (mm)	Cylinder Bore Ø (mm)	Plunger Ø (mm)	Top to Inlet Port (mm)	Saddle Ø (mm)	Plunger Thread Length (mm)	Plunger Outside Thread (mm)	Base Mounting Hole (mm)	Counter Bore Ø (mm)	Collar Thread Length (mm)	Collar Thread Length (mm)
HP0205	25	3.6	48	28	19	42	3/4"-14NPTF	28	M16x1.5	3/4"-14NPTF	1 1/2"-16UN	24	18
HP0505	51	7.4	57	42	30	38	1 1/4"-11.5NPTF	32	M28x1.5	1 1/4"-11.5NPTF	2 1/4"-14UN	25	24
HP1006	110	15.7	85	55	32	38	-	26	M30x2	M30x2	M85x2	25	25

Accessories

Saddles



Hose



Gauge



Hand Pumps



Air Pump





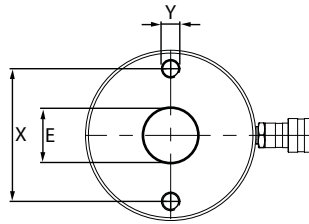
HOLLOW CYLINDERS

Hollow Cylinders

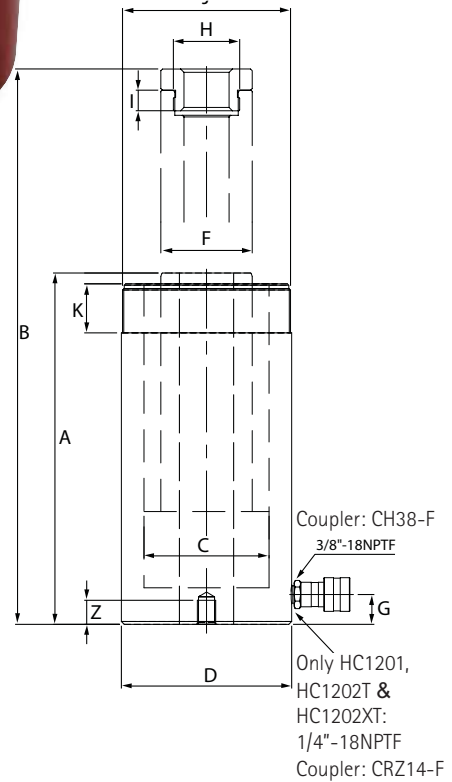
- Heavy Duty return spring for quicker retraction.
- Dual Plunger wipers help to prevent contamination.
- Collar thread for easy attachment.
- High flow coupler with dust cap.



Model Number	Stroke (mm)	A		Oil Capacity (cc)	Weight (Kg)
		Min. Height (mm)	Max. Height (mm)		
CYLINDER CAPACITY: 12 TON = 132 kN					
HC1201T	7.8	60	67	15	1.5
HC1202XT	41	120	161	77	2.8
HC1202T	41	120	161	77	2.8
HC1203XT	76	184	260	143	3.9
CYLINDER CAPACITY: 20 TON = 221 kN					
HC2002T	51	162	213	161	7.2
HC2006T	154	306	460	487	13.4
CYLINDER CAPACITY: 30 TON = 286 kN					
HC3002T	64	179	243	260	10.4
HC3006T	155	330	486	633	19.5
CYLINDER CAPACITY: 60 TON = 589 kN (INCL. 2 CARRY HANDLES)					
HC6003T	76	248	324	641	29.8
HC6006T	152	324	476	1282	36.8
CYLINDER CAPACITY: 100 TON = 1000 kN (INCL. 2 CARRY HANDLES)					
HC10003T	76	254	330	1087	51.4



High Tonnage Cylinders up to 1000 Ton available on Request!

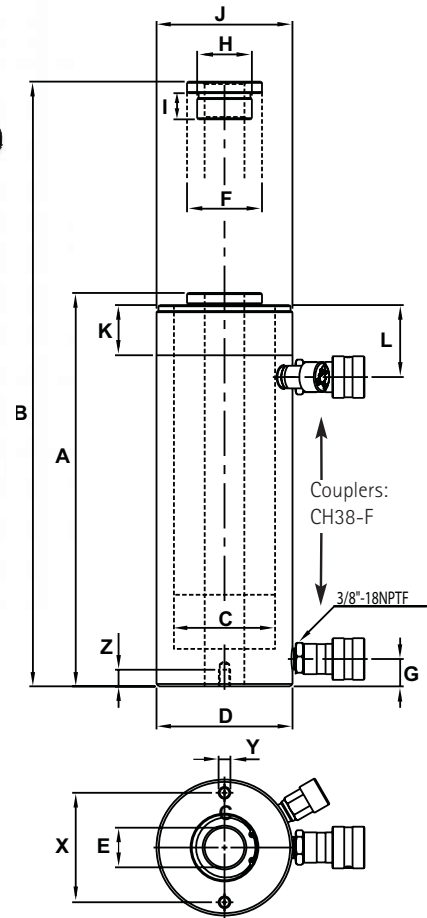


Capacity kN	Cylinder Effective Area (cm ²)	Plunger										Collar Thread		Base Mounting Hole		
		Cylinder Bore Ø (mm)	O.D. (mm)	I.D.		Base to Inlet Port (mm)	Internal Thread (mm)	Internal Thread Lgth (mm)	Ø (mm)	Lgth. (mm)	Bolt Circle (mm)	Thread (mm)	Thread Depth (mm)			
				(mm)	(mm)											
CYLINDER CAPACITY: 12 TON = 132 kN (COUPLER: CRZ14-F)																
12 Ton	132	18.8	55	70	19	35	15	3/4"-16UN	16	2 3/4"-16	30	50.8	5/16"-18UNC	9		
CYLINDER CAPACITY: 12 TON = 132 kN (COUPLER: CH38-F)																
12 Ton	132	18.8	55	70	19	35	19	3/4"-16UN	16	2 3/4"-16	30	50.8	5/16"-18UNC	9		
CYLINDER CAPACITY: 20 TON = 221 kN																
20 Ton	221	31.6	75	99	27	54	19	1 9/16"-16UN	10	3 7/8"-12	38	82.5	3/8"-16UNC	9		
CYLINDER CAPACITY: 30 TON = 286 kN																
30 Ton	286	40.8	85	114	33	63	23	1 13/16"-16UN	17	4 1/2"-12	42	92	3/8"-16UNC	14		
CYLINDER CAPACITY: 60 TON = 589 kN (INCL. 2 CARRY HANDLES)																
60 Ton	589	84.2	125	158	54	93	27	2 3/4"-16UN	17	6 1/4"-12	48	130	1/2"-13UNC	14		
CYLINDER CAPACITY: 100 TON = 1000 kN (INCL. 2 CARRY HANDLES)																
100 Ton	1000	142.8	165	213	79	125	27	4"-16UN	21	8 3/8"-12	60	178	5/8"-11UNC	19		

Double Acting Hollow Cylinders

- Dual Plunger wipers help to prevent contamination.
- Collar thread for easy attachment.
- High flow coupler with dust cap.

High Tonnage Cylinders up to 1000 Ton available on Request!



Model Number	Stroke (mm)	A (mm)		B (mm)		Oil Capacity (cc)		Weight (Kg)
		Min. Height	Max. Height	Push	Pull			
CYLINDER CAPACITY: PUSH 30 TON & PULL 18 TON								
HDC3007	177	331	508	725	455	19.5		
HDC3010	257	432	689	1049	658	24.9		
CYLINDER CAPACITY: PUSH 60 TON & PULL 40 TON								
HDC6003	89	248	337	641	428	29.8		
HDC6006	165	324	489	1282	856	36.8		
HDC6010	257	438	695	2164	1444	31.2		
CYLINDER CAPACITY: PUSH 100 TON & PULL 65 TON								
HDC10001	38	165	203	544	347	28.8		
HDC10003	76	254	330	1087	693	51.4		
HDC10006	152	343	495	2178	1388	69.6		
HDC10010	257	461	718	3678	2345	96.8		

Capacity	Cylinder Effective Area		Cylinder Bore Ø (mm)	D O.D. (mm)	Plunger				Collar Thread		Base Mounting Hole					
	Push (kN)	Pull (kN)			E I.D. (mm)	F O.D. (mm)	G Base to Inlet Port (mm)	H Internal Thread (mm)	I Internal Thread Lgth (mm)	J Ø (mm)	K Lgth. (mm)	X Bolt Circle (mm)	Y Thread (mm)	Z Thread Depth (mm)		
	30 Ton	286	179	41	26	85	114	33	63	23	1 13/16"-16UN	17	4 1/2"-12	42.2	92	3/8"-16UNC
60 Ton	589	394	84	56	125	159	54	92	27	2 3/4"-16UN	17	6 1/4"-12	48.5	130	1/2"-12UNC	14
100 Ton	1001	638	143	91	165	213	79	125	27	4"-16UN	21	8 3/8"-12	60.5	178	5/8"-11UNC	19

Cylinder Accessories

Fitting



Hose



Gauge



Hand Pump





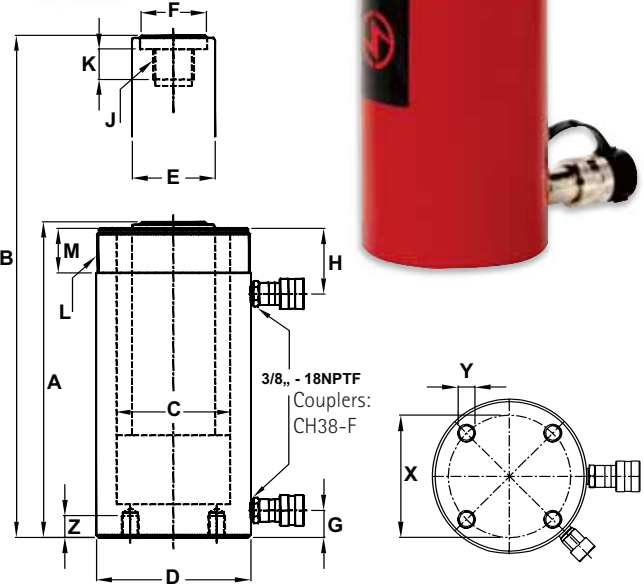
Double Acting Cylinders

- Internal plunger threads.
- Plunger wiper reduces contamination and extends the cylinder-life.
- High strength steel construction manufactured from solid bar.
- High flow 3/8"-18NPTF couplers.
- Collar thread protectors.
- One piece high grade alloy bearing for side load protection and long life.
- Polyurethane cup seal helps to provide an optimum performance.
- Industrial hard chrome plated ram prevents rust and corrosion.
- Maximum working pressure: 700 bar (10,000 psi).



High Tonnage Cylinders up to 1000 Ton available on Request!

Model Number	Stroke (mm)	Oil Capacity		Weight (Kg)		
		Min. Height (mm)	Max. Height (mm)		Push (cc)	Pull (cc)
CYLINDER CAPACITY: PUSH 10 TON & PULL 3.4 TON						
HD1010	255	410	665	367	122	12.1
HD1012	304	458	762	437	145	13.6
CYLINDER CAPACITY: PUSH 30 TON & PULL 15 TON						
HD3008	207	389	596	867	426	19.5
HD3014	368	550	918	1541	758	27.5
CYLINDER CAPACITY: PUSH 50 TON & PULL 15 TON						
HD5506	157	331	488	1113	323	29.4
HD5513	335	509	844	2375	690	44.6
HD5520	511	733	1244	3623	1052	63.7
CYLINDER CAPACITY: PUSH 75 TON & PULL 24 TON (INCL. 2 CARRY HANDLES)						
HD7506	155	348	503	1608	511	39.9
HD7513	333	526	859	3456	1098	59.6
CYLINDER CAPACITY: PUSH 95 TON & PULL 44 TON (INCL. 2 CARRY HANDLES)						
HD10006	167	357	524	2216	1032	60.1
HD10013	333	524	857	4418	2057	85.2
HD10018	461	687	1148	6117	2849	110.0



Capacity	Cylinder Effective Area		Cylinder Bore Ø (mm)	C	D	E	Plunger			G	H	J	K	L	M	X	Y
	Push	Pull					Base to Inlet Port	Internal Thread	Internal Thread Lgth								
	(kN)	(kN)					(mm)	(mm)	(mm)								
10 Ton	101	34	14	4	43	73	35	35	36	53	1"-8	25	2 1/4-14	26	-	-	-
30 Ton	293	144	41	20	73	101	54	50	42	74	1 1/2-16	25	3 5/16"-12	49	-	-	-
50 Ton	496	144	70	20	95	127	79	70	29	73	1"-12	25	5"-12	44	-	-	-
75 Ton	726	231	103	33	115	146	95	70	30	71	1"-12	38	5 3/4"-12	38	-	-	-
100 Ton	928	433	132	61	130	177	95	75	31	75	1 3/4"-12	35	6 7/8"-12	50	139	3/4"-10	25.0



HIGH PRECISION CYLINDERS

High Precision Double Acting Cylinders

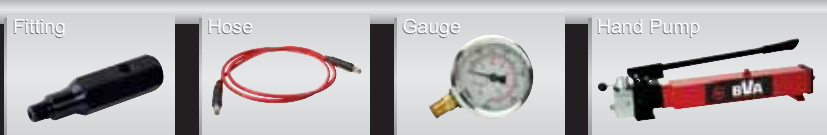
- Ideal for pushing and pulling applications.
- The best choice for production applications.
- High strength steel construction.
- One piece high grade alloy bearing for side load protection and longer life.
- Polyurethane cup seal helps to provide an optimum performance.
- External plunger threads.
- Internal base threads.
- Maximum working pressure: 700 bar (10,000 psi).



Model Number	Stroke (mm)	A		B		Oil Capacity		Weight (Kg)
		Min. Height (mm)	Max. Height (mm)	Push (cc)	Pull (cc)			
CYLINDER CAPACITY: PUSH 8 TON & PULL 4.5 TON								
HPD0906	155	350	505	175	99	6.6		
HPD0910	257	452	709	291	165	8.4		
CYLINDER CAPACITY: PUSH 15 TON & PULL 7.1 TON								
HPD1606	159	389	548	322	160	10.0		
HPD1610	260	490	750	527	262	12.8		

	Max. Cylinder Capacity		Cylinder Effective Area		C Bore Ø (mm)	D Cylinder Outside Ø (mm)	E Plunger				J Base to Adv. Port (mm)	K Top to Return Port (mm)	L Collar				Q Int. Base Thread Length (mm)
							Ø (mm)	F Protru-sion (mm)	G Thread	H Tread Lgth (mm)			M Lgth (mm)	N Thread (mm)	P Thread Lgth (mm)	Int. Base Thread (mm)	
	Push (kN)	Pull (kN)	Push (cm²)	Pull (cm²)													
8 Ton	79	45	11.3	6.4	38	64	25	25	3/4"-16N	19	56	56	38	2"-12N	15	111/16"-18N	35
15 Ton	142	71	20.3	10.8	50	76	36	28	11/8"-12N	25	73	73	54	2 5/8"-16N	25	2 3/16"-16N	41

Cylinder Accessories





Hydraulic Hand Pumps

- P350, P1000, P2001, P4301 and P8701 feature two-speed operation which reduces operator fatigue.
- Internal pressure relief valve for overload protection.
- External load release valve for Single Acting Cylinder usage.
- Large oil capacities to power a wide range of cylinders and tools.
- Models P350 and P1000 are constructed of high strength lightweight aluminium alloy for easy handling.
- Maximum working pressure: 10,000 psi / 700 bar.

Aluminium Reservoir The Ultra Light Weight

P350 and P1000 hand pumps are aluminium and the preferred choice when portability is important.



P350

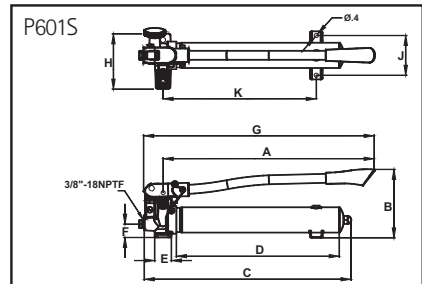
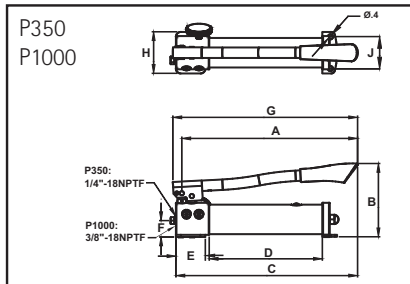
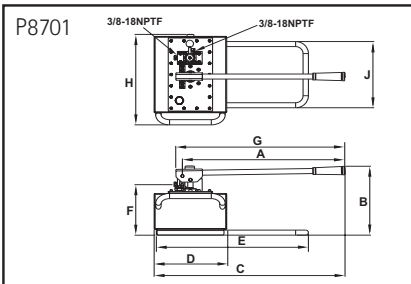


P2301

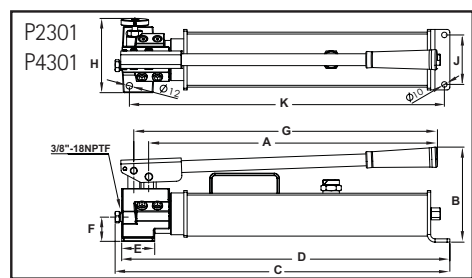


P601S

HAND PUMPS



Model Number	A (mm)	B (mm)	C (mm)	D (mm)	E (mm)	F (mm)	G (mm)	H (mm)	J (mm)	K (mm)
P601S	482	160	496	374	40	32	553	132	95	369
P350	344	141	367	227	60	34	362	85	65	-
P1000	552	161	585	377	92	32	576	120	100	430
P2301	525	173	609	597	60	44	552	135	90	573
P4301	525	195	581	569	60	44	552	135	95	545
P8701	655	295	771	293	614	210	684	387	284	-

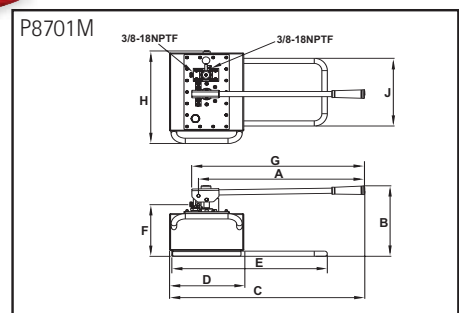
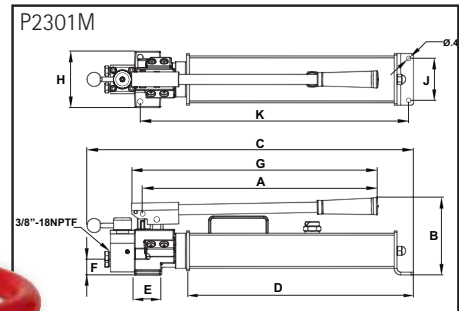
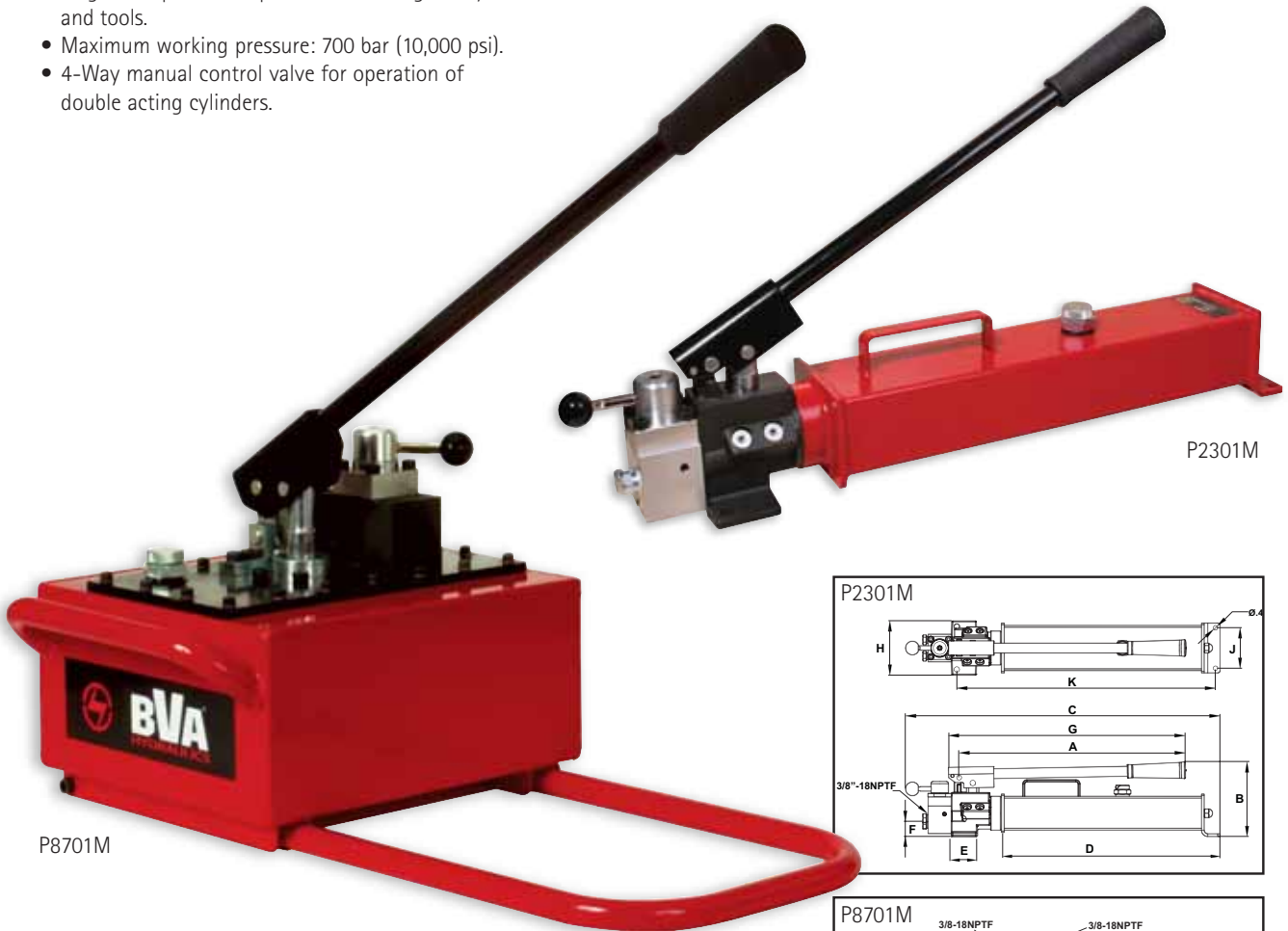


Model Number	Stage:	Usable Oil Capacity c.c.	Pressure Rating		Oil Displacement per Stroke		Max. Operating Force (N)	Piston Stroke (mm)	Oil Outlet Port	Weight (kg)
			1 st Stage (bar)	2 nd Stage (bar)	1 st Stage (cc)	2 nd Stage (cc)				
P601S	Single	600	-	700	-	2.46	486	20.0	3/8"-18NPTF	5.9
P350	Two	350	14	700	3.3	0.82	363	10.5	1/4"-18NPTF	3.0
P1000	Two	1000	14	700	13.2	2.30	441	20.7	3/8"-18NPTF	6.2
P2301	Two	2100	14	700	13.2	2.30	441	20.7	3/8"-18NPTF	12.6
P4301	Two	4100	14	700	13.2	2.30	441	20.7	3/8"-18NPTF	17.0
P8701	Two	7800	20	700	119.8	4.73	637	42.5	3/8"-18NPTF	35.0



Hydraulic Hand Pumps (Manual Control Valve)

- Internal pressure relief valve for overload protection.
- Large oil capacities to power a wide range of cylinders and tools.
- Maximum working pressure: 700 bar (10,000 psi).
- 4-Way manual control valve for operation of double acting cylinders.



Model Number	A (mm)	B (mm)	C (mm)	D (mm)	E (mm)	F (mm)	G (mm)	H (mm)	J (mm)	K (mm)
P2301M	502	169	602	467	60	44	526	120	90	573
P8701M	655	295	771	293	614	210	684	387	284	-

Model Number	Stage	Usable Oil Capacity c.c.	Pressure Rating		Oil Displacement per Stroke		Max. Operating Force (N)	Piston Stroke (mm)	Oil Outlet Port	Weight (kg)
			1 st Stage (bar)	2 nd Stage (bar)	1 st Stage (cc)	2 nd Stage (cc)				
P2301M	Two Speed	2100	14	700	13.2	2.30	440	20.7	3/8"-18NPTF	14.6
P8701M	Two Speed	7800	20	700	119.8	4.73	650	42.5	3/8"-18NPTF	35.2

Accessories





Air Hydraulic Pumps

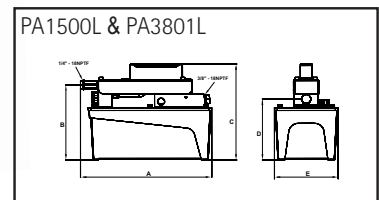
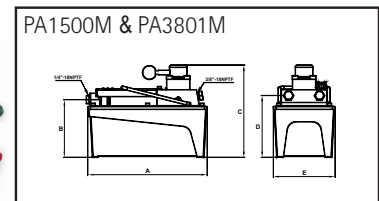
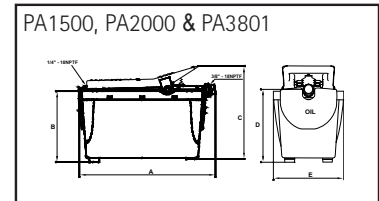
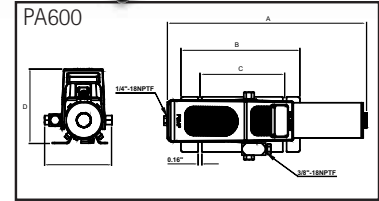
- High Strength reinforced alloy aluminium reservoir is lightweight and corrosion resistant.
- Internal pressure relief valve for over load protection.
- Suggested air pressure range: 114-700 psi / 8-14 bar.
- Designed to be used with single acting cylinders.
- PA1500M and PA3801M are designed to be used with double acting cylinders.
- Dust cover protection for the release control valve.
- Dual stage release valve.
- Model PA2000 features high pressure, high flow performance.
- Maximum working pressure: 700 bar (10,000 psi).
- PA600H same as PA600, but with Hand Operation.

PA600 & PA600H

- Pump can work in any position.
- Mounting plate allows the pump to be securely fastened.
- Hydraulic Port swivels for easy connection.



PA600



PA1500

PA1500L

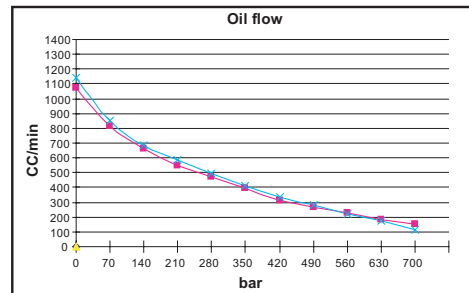
Pressure Rating (BAR)	Air Pressure Range (BAR)	Air Input Port	Oil Outlet Port
AIR HYDRAULIC PUMPS			
700	8 -14	1/4\"-18NPTF	3/8\"-18NPTF

Model Number	Oil Capacity cc	Output Flow Rate (L/min)		Dimensions (mm)					Weight (kg)	
		No Load	Load	A	B	C	D	E		
PUMPS FOR USE WITH SINGLE ACTING CYLINDERS										
PA600	600	1.00	0.15	426	250	178	156	142	6.4	
PA600H	600	1.00	0.15	426	250	178	114	146	5.7	
PA1500	1500	1.07	0.18	267	126	185	131	136	8.2	
PA2000	2000	1.00	0.15	294	149	207	157	152	9.1	
PA3801	3800	1.00	0.15	321	129	187	133	187	12.3	
PA7550	7550	1.00	0.15	321	153	211	156	214	17.4	
PA1500L	1500	0.90	0.16	279	160	204	130	136	8.8	
PA3801L	3800	0.90	0.16	321	163	207	132	187	13.8	
PUMPS FOR USE WITH DOUBLE ACTING CYLINDERS										
PA1500M	1500	1.07	0.15	267	127	202	135	136	8.7	
PA3801M	3800	1.00	0.18	321	129	205	138	187	13.5	

PA600H: With Hand Operation. PA1500L: With Remote Control. PA1500M & PA3801M: With Valve.

Remote Control

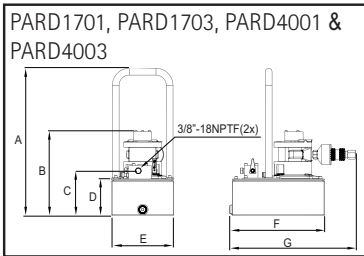
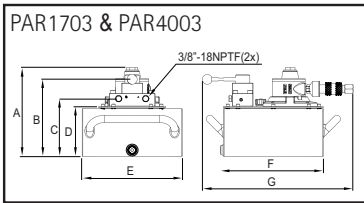
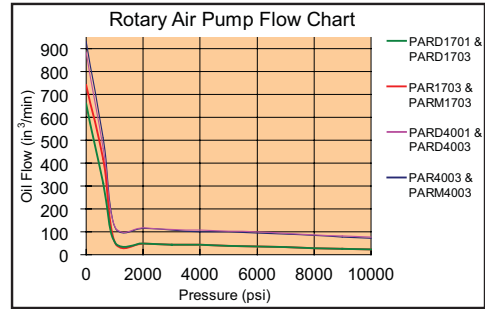
PA1500L comes with a remote control that extends 366 cm. The remote control offers an easy 2 button operation for precise and advanced, hold and retract functions.





Rotary Air Hydraulic Pumps

- Two speed operation for fast and improved productivity.
- Models available with auto return valve.
- Internal relief valve for overload protection.



PAR1703

PARD4001

Model Number	Motor Size		Usable Oil Capacity (Liter)	Pressure Rating		Oil Output Flow Rate		Valve Type	Valve Function	Dynamic Air Pressure Range (Bar)
	(kW)	(hp)		First Stage (bar)	Second Stage (bar)	First Stage (L/min)	Second Stage (L/min)			

USED WITH SINGLE ACTING CYLINDER

PARD1701	1.3	1.7	3.8	48	700	4.36	0.37	Dump	*Advance/Return	7
PARD1703			11.4	48						
PARD4001	3	4	3.8	55	700	7.63	1.16			
PARD4003			11.4	55						

USED WITH DOUBLE ACTING CYLINDER

PAR1703	1.3	1.7	11.4	48	700	5.47	0.37	Manual PW4	*Advance/ Hold/Return	7
PAR4003	3	4	11.4	55	700	8.39	1.16			

Model Number	Air Consumption (L/min)	Sound Level (dBA)	Dimensions							Weight (kg)
			A (mm)	B (mm)	C (mm)	D (mm)	E (mm)	F (mm)	G (mm)	

USED WITH SINGLE ACTING CYLINDER

PARD1701	1246	93	485	239	147	120	205	313	404	18.8
PARD1703	1246	93	-	304	212	185	305	313	456	21
PARD4001	2690	100	485	279	147	120	205	313	415	20
PARD4003	2690	100	-	344	212	185	305	313	467	23

USED WITH DOUBLE ACTING CYLINDER

PAR1703	1246	93	303	267	209	185	305	313	459	20.5
PAR4003	2690	100	344	267	209	185	305	313	470	26.9



ELECTRIC PUMPS

Electric Pumps

- Quiet operation meets OSHA regulations (80dBA).
- 2 Speed operation.
- Full load starting capacities.
- Large easy-carrying handles.
- Internal filter prevents contamination from damaging pump.
- Rugged durable design meets the demands of industrial application.
- Precision components to minimize wear and improve overall dependability.
- Available in 3-way or 4-way configuration.
- Ideal for on site construction as well as maintenance.



PEW03
Remote Control

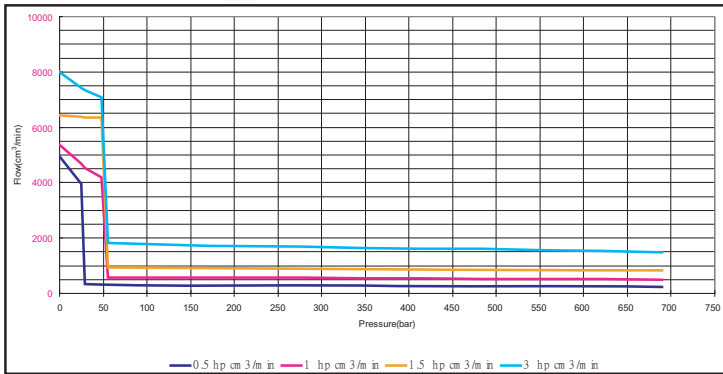
Electrical Pumps
*will be delivered
without hydraulic
oil inside.*



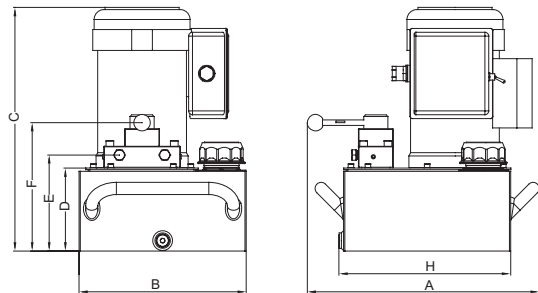
PE0501



PEW3015
Custom Made



Valve Type	Valve Function	Motor Voltage (volts)	Sound Level (dBA)
Manual	4-way 3-position	230	80



Model Number	Motor Size (kW)	Usable Oil Capacity (Liter)	Pressure Rating (bar)		Oil Output Flow Rate (Liter)		Current Draw (Amp)	A (mm)	B (mm)	C (mm)	D (mm)	E (mm)	F (mm)	H (mm)	W.t. for PE (kg)
			1 st Stage	2 nd Stage	1 st Stage	2 nd Stage									
PE0501	0.37	3.8	30	700	4.2	0.22	5	379	261	485	120	144	203	314	28.5
PE1002	0.75	7.6	40	700	4.2	0.46	6	421	305	454	152	176	234	314	33.0
PE1503	1.12	11.4	40	700	5.1	0.69	9	421	305	502	185	209	267	314	41.5
PE3005	2.24	19.4	40	700	6.3	1.22	17	421	305	674	312	336	394	314	47.0



Electric Pumps with Solenoid Valve

- Quiet operation meets OSHA regulations (80dBA).
- Ideal for applications where a remote control is required.
- 2 speed operation.
- Full load starting capabilities.
- Internal filter keeps contamination from damaging pump.
- 3.65 meter hand-held remote, controls the solenoid valve.

Electric Pumps

Will be delivered without Hydraulic Oil

Solenoid Valve

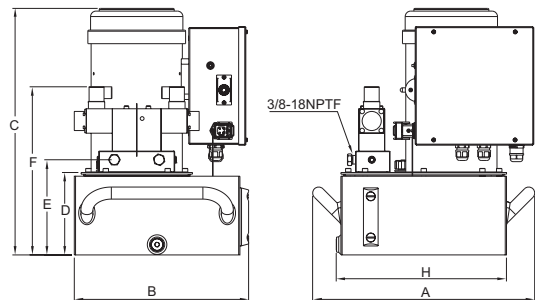
Also possible with 3-way/3-position valve



PES1002



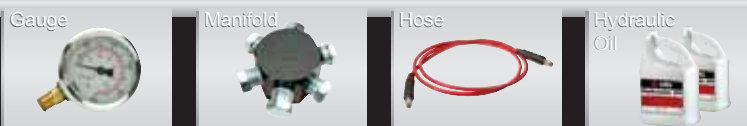
PES0501



Model Number	Use with Cylinder	Motor Size (hp)	Usable Oil Capacity (liter)	Pressure Rating		Oil Output Flow Rate		Valve Type	Valve Function	Current Draw (Amp)	Motor Voltage (Volts)	Weight (kg)
				First Stage (bar)	Second Stage (bar)	First Stage (l/min)	Second Stage (l/min)					
PES0501	Double Acting	0.5	3.8	25	700	3.936	0.246	4-way 3-position	Advanced Hold/Return	4.5	230	33.5
PES1002		1	7.6	48	700	4.182	0.492			6		38.5
PES1503		1.5	11.4	48	700	6.314	0.82			8.5		46.6
PES3005		3	18.9	48	700	7.052	1.476			17		52.5

Model Number	Dimensions (mm)						
	A (mm)	B (mm)	C (mm)	D (mm)	E (mm)	F (mm)	H (mm)
PES0501	366.1	310	485.2	120.0	143.5	277.9	315.9
PES1002	407.2	321	454.1	151.8	175.3	309.7	313.5
PES1503	407.2	321	502.3	184.8	208.3	342.7	313.5
PES3005	407.2	321	654.1	311.8	335.3	469.7	313.5

Accessories



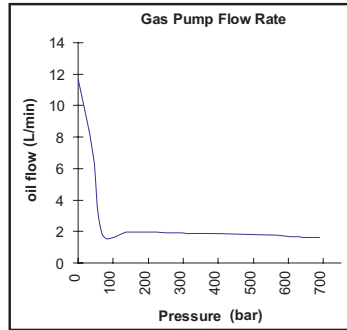
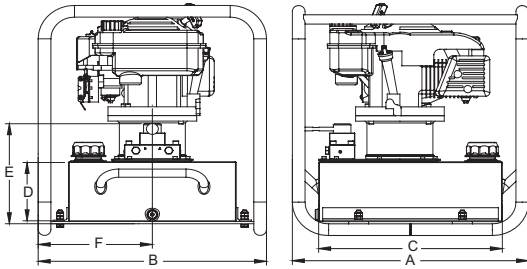


Gasoline Pump

- Gas pump will provide 10,000 psi / 700 Bar hydraulic force at remote locations.
- Industrial grade 5.5 hp Honda gas engine.
- Manual control valve for use with single or double acting cylinders or tools.
- Two speed operation.
- Gas pump features a sturdy protective roll cage for use in the toughest environments.



PG5505



Gasoline Pump:
 Will be delivered without hydraulic oil inside.
 No Stock item,
 only on special request!

GASOLINE PUMP

Model Number	Motor Size (kW)	Valve Type	Pressure Rating (bar)		Oil Output Flow Rate (L/min)		Valve Function	Rotation Speed (rpm)	Sound Level (dBA)	A (mm)	B (mm)	C (mm)	D (mm)	E (mm)	F (mm)	Weight (kg)
			1st Stage	2nd Stage	1st Stage	2nd Stage										
USABLE OIL CAPACITY: 19 LITER																
PG5505	4.1	Manual	48	700	11.68	1.64	4-way 3-position	3600	93	592	572	460	159	273	283	55

Pumps / Cylinders Operation and Speed Charts

Model Number	Number of stroke per cm of Cylinder Plunger Travel															
	5 ton		10 ton		15 ton		25 ton		30 ton		50 ton		75 ton		95 ton	
	No Load	Load	No Load	Load	No Load	Load	No Load	Load	No Load	Load	No Load	Load	No Load	Load	No Load	Load
POWER SOURCE: MANUAL																
P601S	3	3	6	6	9	9	14	14	17	17	29	29	42	42	54	54
P350	2	8	5	18	7	25	11	41	13	52	22	87	32	127	41	162
P1000	1	3	2	7	2	9	3	15	4	19	6	31	8	46	11	58
P2301/P2301M	1	3	2	7	2	9	3	15	4	19	6	31	8	45	10	58
Seconds per cm of Cylinder Plunger Travel																
Model Number	5 ton		10 ton		15 ton		25 ton		30 ton		50 ton		75 ton		95 ton	
	No Load	Load	No Load	Load	No Load	Load	No Load	Load	No Load	Load	No Load	Load	No Load	Load	No Load	Load
POWER SOURCE: AIR (BASED ON 7 BAR AIR PRESSURE)																
PA600	0.4	2.6	0.9	5.8	1.2	8.1	2.0	13.3	2.5	16.8	4.2	28.3	6.2	41.6	8.0	53.1
PA1500	0.4	2.1	0.9	4.8	1.2	6.8	2.0	11.1	2.5	14.0	4.2	23.6	6.2	34.6	8.0	44.2
PA1500M	0.4	2.6	0.9	5.8	1.2	8.1	2.0	13.3	2.5	16.8	4.2	28.3	6.2	41.6	8.0	53.1
PA2000	0.4	2.6	0.8	5.8	1.1	8.1	1.9	13.3	2.3	16.8	4.0	28.3	5.8	41.6	7.4	53.1
PA3801	0.4	2.6	0.8	5.8	1.1	8.1	1.9	13.3	2.3	16.8	4.0	28.3	5.8	41.6	7.4	53.1
PA1500L & PA3801L	0.4	2.3	1.0	5.4	1.4	7.6	2.2	12.5	2.8	15.7	4.7	26.6	6.9	39.0	8.8	49.8
POWER SOURCE: ELECTRIC (SPEED BASED ON 50Hz)																
PE0501	0.1	1.5	0.2	3.5	0.3	4.9	0.5	8.0	0.6	10.1	1.0	17.0	1.5	24.9	1.9	31.8
PES0501	0.1	1.5	0.2	3.3	0.2	4.6	0.4	7.6	0.5	9.6	0.9	16.2	1.3	23.8	1.6	30.4
PES1002	0.1	0.7	0.2	1.7	0.2	2.4	0.4	3.9	0.5	4.9	0.9	8.2	1.3	12.1	1.6	15.4
PES1503	0.1	0.5	0.1	1.0	0.2	1.5	0.3	2.4	0.4	3.0	0.7	5.1	1.0	7.5	1.2	9.5
PES1503	0.05	0.2	0.1	0.6	0.2	0.8	0.3	1.3	0.3	1.6	0.5	2.7	0.8	4.0	1.0	5.1
PE0501	0.10	1.6	0.2	3.5	0.3	5.0	0.5	8.1	0.6	10.2	1.1	17.3	1.6	25.3	2.0	32.4
PE1002	0.09	0.8	0.2	1.8	0.3	2.5	0.5	4.0	0.6	5.1	1.0	8.6	1.5	12.7	1.9	16.2
PE1503	0.06	0.5	0.1	1.1	0.2	1.5	0.3	2.4	0.4	3.1	0.7	5.2	1.0	7.6	1.3	9.7
PE3005	0.05	0.3	0.1	0.6	0.2	0.8	0.3	1.3	0.4	1.7	0.6	2.9	0.9	4.2	1.1	5.4
POWER SOURCE: ROTARY AIR (BASED ON 7 BAR AIR PRESSURE)																
PARD17--	0.04	1.0	0.1	2.4	0.1	3.3	0.2	5.4	0.3	6.8	0.5	11.5	0.7	16.8	0.9	21.5
PARD40--	0.03	0.3	0.1	0.8	0.1	1.1	0.1	1.7	0.2	2.2	0.3	3.7	0.4	5.4	0.5	6.9
PAR17--	0.04	1.0	0.1	2.4	0.1	3.3	0.2	5.4	0.3	6.8	0.4	11.5	0.6	16.8	0.8	21.5
PAR40--	0.03	0.3	0.1	0.8	0.1	1.1	0.1	1.7	0.2	2.2	0.3	3.7	0.4	5.4	0.5	6.9
POWER SOURCE: GASOLINE																
PG5505	0.03	0.2	0.1	0.5	0.1	0.8	0.2	1.2	0.2	1.6	0.4	2.7	0.5	3.9	0.7	5.0

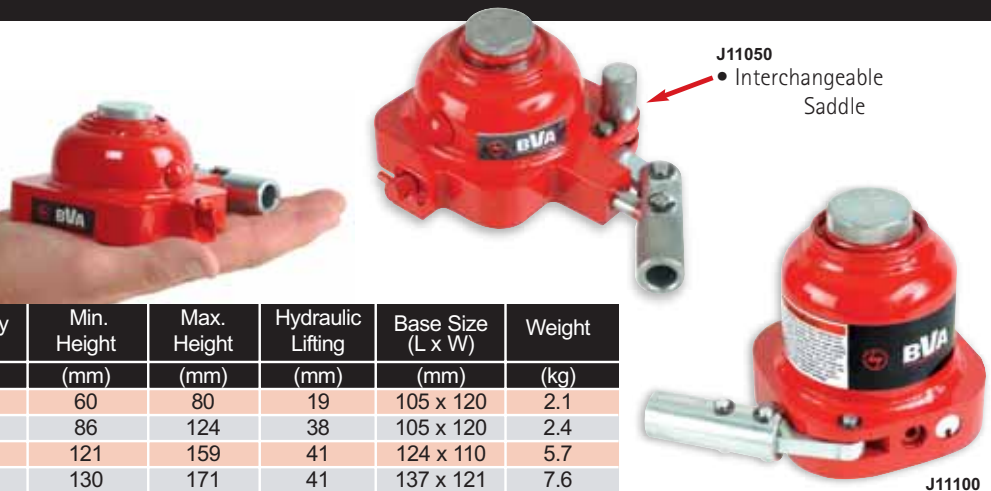


Mini Jacks

- Low Profile mini jack.
- Pocket size and light weight.
- Convenient for storage.

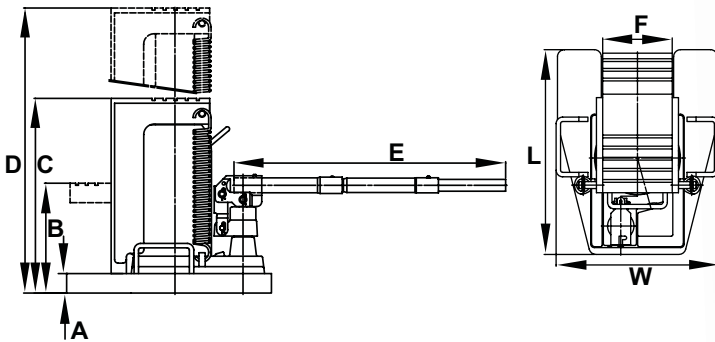
Mini Jacks

Model Number	Capacity	Capacity	Min. Height (mm)	Max. Height (mm)	Hydraulic Lifting (mm)	Base Size (L x W) (mm)	Weight (kg)
	(Ton)	(kN)					
J11050	5	50	60	80	19	105 x 120	2.1
J11055	5	50	86	124	38	105 x 120	2.4
J11100	10	100	121	159	41	124 x 110	5.7
J11200	20	200	130	171	41	137 x 121	7.6



Toe Jacks

- Heat treated and chrome plated medium-carbon steel cylinder.
- Chrome plated ram optimizes the performance and insures a longer seal life.
- U.S. Patented by-pass device protects hydraulic system from overtravelling damage.



Toe Jacks

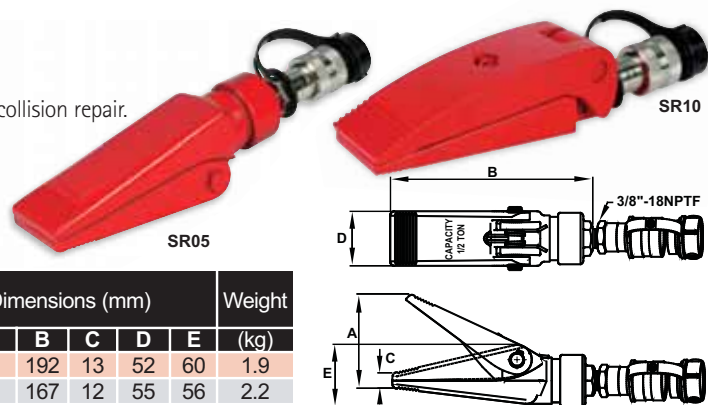
Model Number	Capacity	Capacity	A	B	C	D	E	F	L	W	Weight
	(Ton)	(kN)	(mm)	(mm)	(mm)	(mm)	(mm)	(mm)	(mm)	(mm)	(kg)
J13060	3	30	16	146	230	360	600	88	215	190	17.8
J13120	6	60	22	152	267	397	600	80	280	190	27.2
J13200	10	100	28	158	280	410	600	100	295	234	39.5
J13300	15	147	28	168	332	472	972	100	316	272	54.3

Spreaders

- Multi-purpose applications: to spread, lift, level machinery or collision repair.
- Designed to work in confined working areas.
- Jaws close automatically with the return spring after the pressure is released.

Spreaders

Model Number	Capacity	Capacity	Cylinder Effective Area (mm ²)	Oil Capacity (cc)	Dimensions (mm)					Weight (kg)
	(Ton)	(kN)			A	B	C	D	E	
SR05	0.5	5	7.9	9.5	90	192	13	52	60	1.9
SR10	1	10	7.0	14.1	99	167	12	55	56	2.2





Press

- New series of presses with double speed hydraulic hand pump and single acting ram with return spring.
- All presses are supplied with 2 "V" Arbor Plates and a punch plate.
- The 50 ton model comes with a moveable cylinder.
- The presses are designed and manufactured as per the latest CE directives.
- The presses come with a winch for hoisting the working table.



50 Ton Moveable Cylinder



Punch Plate included

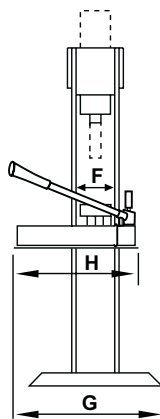
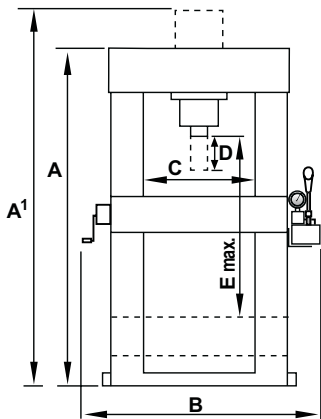
Two "V" Arbor Plates included



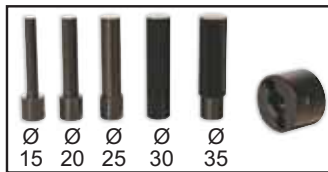
Winch to lift working table



Double speed Handpump with Gauge

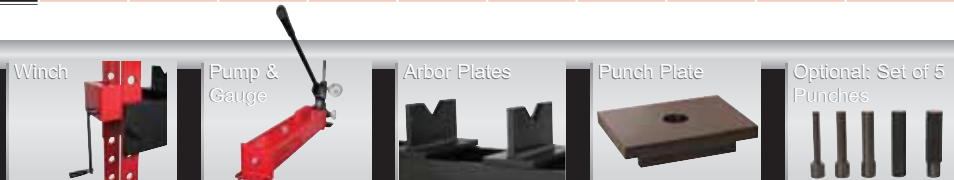


Optional: SAP 50 Adapters



Model Number	Cylinder	Pump	A	A1	B	C	D	E	F	G	H	Weight (kg)
			(cm)	(cm)	(cm)	(cm)	(mm)	(cm)	(cm)	(cm)	(cm)	
MANUAL PRESS 50 TON												
SMS5510	H5510	P2301	200	208	136	78.5	260	126	18	75	67	412
SMS5513	H5513	P4301	200	216	138	78.5	337	126	18	75	67	415
MANUAL PRESS 100 TON												
SMS10010	H10010	P4301	210	221	170	102.5	260	115	27	95	67	1180

Accessories



Electrical Press

- New series of electrical presses with double acting cylinder.
- All presses are supplied with 2 "V" Arbor Plates and a punch plate.
- The presses come with a moveable Ram and winch to hoist the working table.

Operating by remote control

- Easy and flexible operation by means of the remote control.



SED10013

Model Number	Cylinder	Pump	A	A1	B	C	D	E	F	G	Weight (kg)
			(cm)	(cm)	(cm)	(mm)	(cm)	(cm)	(cm)	(cm)	
ELECTRICAL PRESS WITH REMOTE CONTROL											
SED5513	HD5513	PE0501	200	216	158	78.5	335	126	18	75	440
SED10013	HD10013	PE1002	210	221	190	102.5	333	115	27	85	1220

Operating by: "Two"-hands

- Safe Two-hand operation.
- Flashing warning light - when operating.



SEC10013

Model Number	Cylinder	Pump	A	A1	B	C	D	E	F	G	Weight (kg)
			(cm)	(cm)	(cm)	(mm)	(cm)	(cm)	(cm)	(cm)	
ELECTRICAL PRESS "TWO-HANDS" OPERATION											
SEC5513	HD5513	PE0501	200	216	158	78.5	335	126	18	75	445
SEC10013	HD10013	PE1002	210	221	190	102.5	333	115	27	85	1230

Accessories





Cutters

These tools are used for many varying tasks such as:

- cutting chain and many other varied uses.
- cutting re-bar in the construction industries.
- cutting flat bar.
- cutting in all kind of emergency situations like:
 - a) cutting and sealing off old steel gas pipes.
 - b) cutting aircraft seats and frame work, in an accident.
 - c) cutting the pedals in automobile accidents.



CT10
(Excluding
Cylinder H1002)



Cutter Blades

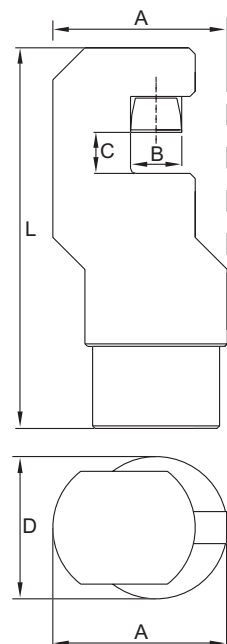
Upper Blade
 10 T CTU10 24 mm
 50 T CTU50 50 mm



Lower Blade
 10 T CTL10 24 mm
 50 T CTL50 50 mm



CT50
(Excluding
Cylinder H5502)



Model Number	Capacity kN	A (mm)	B (mm)	C (mm)	D (mm)	L (mm)	Weight		Chain (Max.) ø(mm)	Strength (grades)	Steel Bar ø(mm)	Standards
							excl. Cyl. (kg)	incl. Cyl. (kg)				
CAPACITY: 10 TON												
CT10	101	81	24	19,5	68	168	2	5	19	28-43-50	19 15	ASTM-413 DIN 5684
									14	60-80	13 11	DIN 5685 DIN 764
CAPACITY: 50 TON												
CT50	496	155	40	70	135	260	16	31,5	60	60-80	35-45	DIN 5684
									50	60-80-100	50-60	DIN 5684
									40	28-43-50-100	60-70	DIN 685

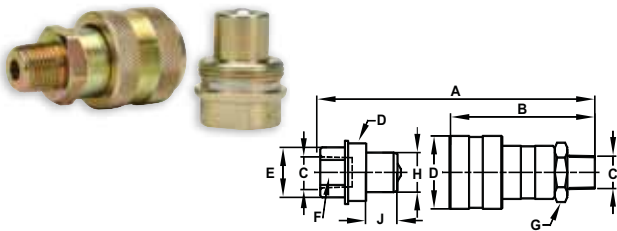
Hydraulic Accesories

Coupler

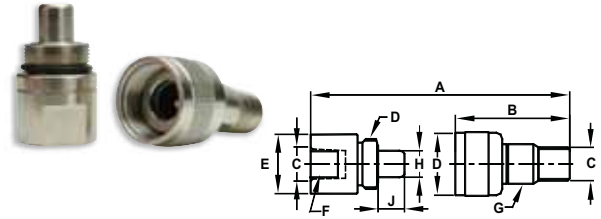
Model Number			Dimensions (mm)									Dust Cap(s)
Complete Set	Male Half	Female Half	A*	B	C	D	E	F	G	H	J	
HIGH-FLOW COUPLER												
CH38	CH38M	CH38F	81.1	72.1	3/8"-18NPTF	1 3/16"-16	28	24	25	19	16	Female
REGULAR-FLOW COUPLER												
CR38	CR38M	CR38F	80	55.9	3/8"-18NPTF	15/16"-20	26	24	19	13	13	Female
CRZ14	CRZ14M	CRZ14F	61.5	42.4	1/4"-18NPTF	13/16"-20	24	21	15	10	9	Female & Male

* Value A is total length when male and female couplers are connected.

CH38



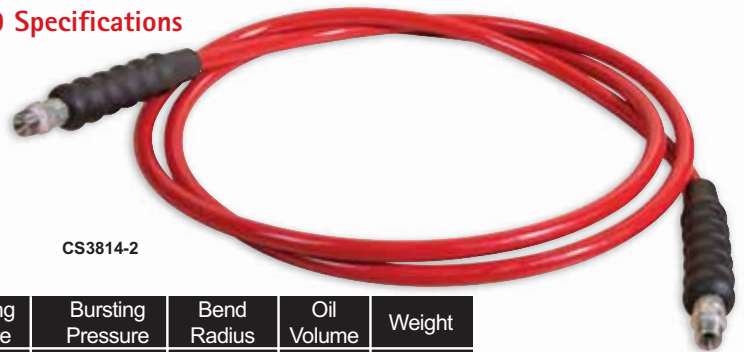
CR38
CRZ14



Hoses

Hose Exceeds DIN 2022-1 and SAE 100R9 Specifications

- Rubber Bend Restrictors.
- High Working Pressure.
- Optimum Flexibility.
- Light Weight.
- Temperature Range:
From -40°C up to +100°C.



CS3814-2

Model Number	I.D. Ø	Hose End Fittings	Operating Pressure (bar)	Bursting Pressure (bar)	Bend Radius (mm)	Oil Volume (cc)	Weight (kg)
Hose 2M							
CS3814-2	6.35mm / 1/4"	3/8"-18NPTF	700	2800	100	230	2.4
CS3838-2	9.5mm / 3/8"	3/8"-18NPTF	700	2800	150	515	3.1
HOSE CUSTOM LENGTH (SPECIAL ORDER; NO STOCK ITEM)							
CS38	-	3/8"-18NPTF	700	2800	100	115/M ¹	0.2 - 0.25
CS14/M	6.35mm / 1/4"	-	700	2800	100	115/M ¹	0.2 - 0.25
CS38	-	3/8"-18NPTF	700	2800	150	257/M ¹	0.2 - 0.3
CS38/M	9.5mm / 3/8"	-	700	2800	150	257/M ¹	0.2 - 0.3

CS3838-2



- POLYURETHANE**
- STEEL WIRE**
- ARAMID**
- POLYAMIDE**





ACCESSORIES: MANIFOLDS / GAUGES

Pressure Gauge

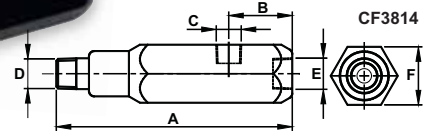
Model Number	Face Diameter (mm)	Fitting	Thread	Pressure Range		Graduation			
						Major Graduation	Minor Graduation	Major Graduation	Minor Graduation
						(psi)		(bar)	
WET									
GBW1460	63	Brass	1/4"-18NPTF	0-15,000	0-1000	1000	500	100	20
GSW1460	63	Stainless Steel	1/4"-18NPTF	0-10,000	0-700	1000	500	100	20



GBW1460

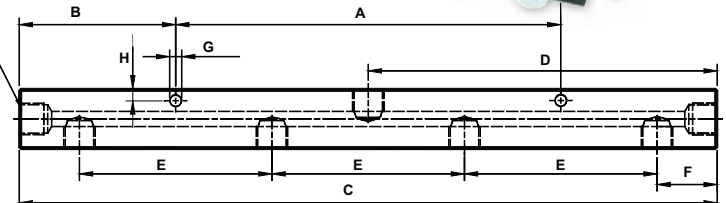
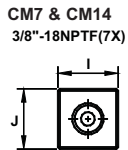
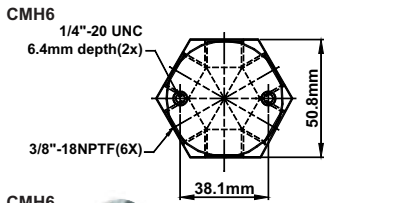
Fitting / Gauge Adaptor

Model Number	Dimensions (mm)					
	A	B	C	D	E	F
CF3814	130	35	1/4"-18NPTF	3/8"-18NPTF	3/8"-18NPTF	32

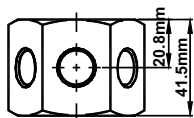


Manifold

Model Number	Number of Ports	Port Size	Mounting Hole
6-PORT HEXAGON MANIFOLD			
CMH6	6	3/8"-18NPTF	1/4"-20UNC
17.8 CM LONG MANIFOLD			
CM7	7	3/8"-18NPTF	1/4"-20UNC
35.6 CM LONG MANIFOLD			
CM14	7	3/8"-18NPTF	1/4"-20UNC



CMH6

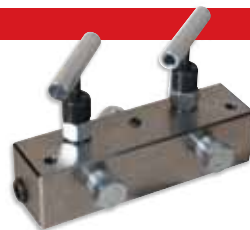


Model Number	A (mm)	B (mm)	C (mm)	D (mm)	E (mm)	F (mm)	G (mm)	H (mm)	I (mm)	J (mm)
CM7	76.2	50.8	177.8	88.9	38.1	31.8	6.4	6.3	31.8	31.8
CM14	203	82.5	368	184	101.5	31.8	6.4	6.4	31.8	31.8

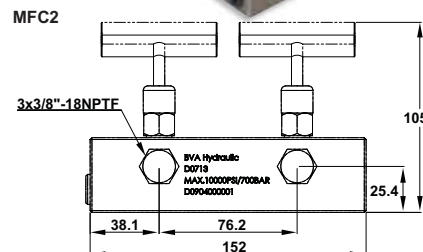
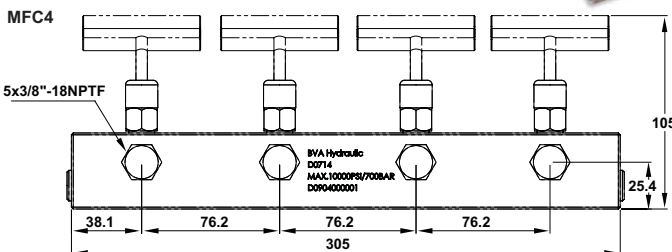
Manifold - Split Flow

Model Number	Number of Ports	Port Size	Mounting Hole
SPLIT FLOW MANIFOLD			
MFC2	2	3/8"-18NPTF	1/4"-20UNC
SPLIT FLOW MANIFOLD			
FMC4	4	3/8"-18NPTF	1/4"-20UNC

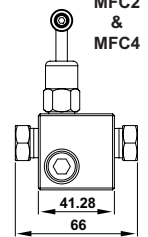
MFC2



MFC4



MFC2 & MFC4



Accessories

Saddle



Hose



Gauge



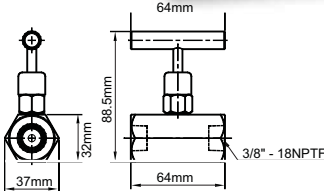
Base



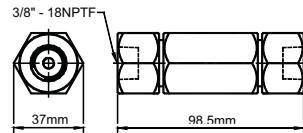


Flow Control Valve

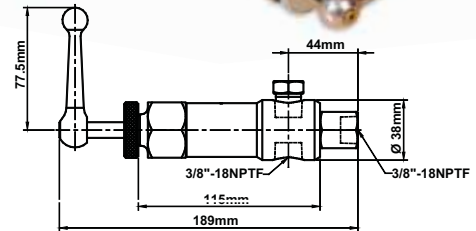
CVN1
CVN3



CVC3



CVR3
CVR3/H



Model Number	Ports	Application	Hydraulic Symbol
NEEDLE VALVE			
CVN1	1/4"-18NPTF	Controls cylinder speed and acts as temporary shut-off valve for load holding.	
CVN3	3/8"-18NPTF		
CHECK VALVE			
CVC3	3/8"-18NPTF	Allows flow in one direction only.	
PRESSURE RELIEF VALVE			
CVR3	3/8"-18NPTF	Controls pressure developed by the pump in hydraulic loop. By-pass occurs when pre-set pressure is reached. Turn clockwise to increase pressure counter clockwise to decrease.	
CVR3/H	3/8"-18NPTF		

Pump Mounted Valves

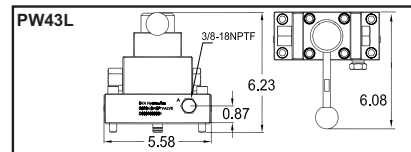
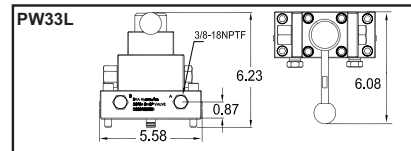
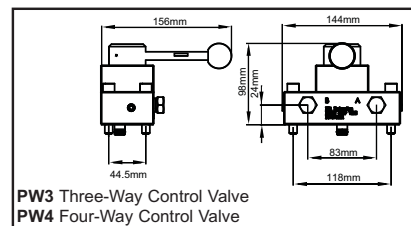
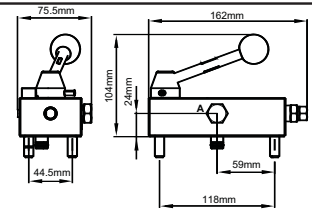


PW3

PW33L & PW43L

Valve Operation	Valve Type	Use with Cylinder	Model Number	Hydraulic Symbol	Schematic Flow path	Weight (kg)
Manual	3-way, Tandem Center	Single Acting	PW2			1.8
			PW3			1.8
	4-way, Tandem Center	Double Acting	PW4			1.8
			PW33L			2.7
	4-way, 3-position, Tandem Center, Locking	Double Acting	PW43L			2.7

PW2
Two-Way
Control
Valve



ACCESSORIES: VALVES



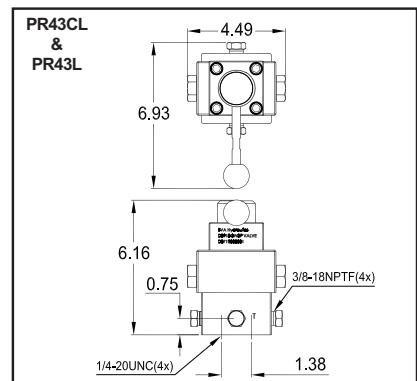
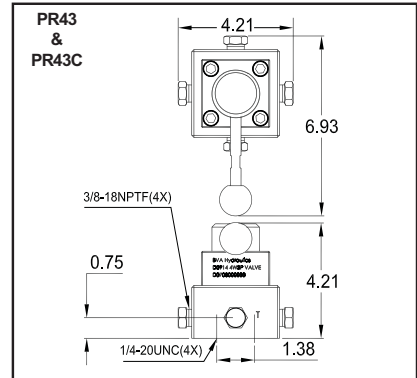
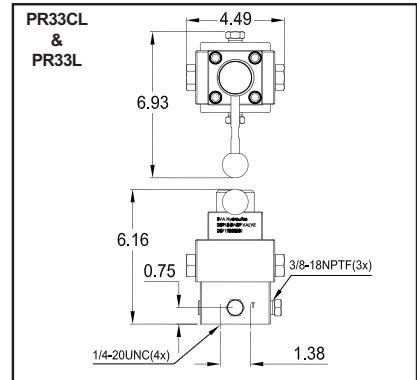
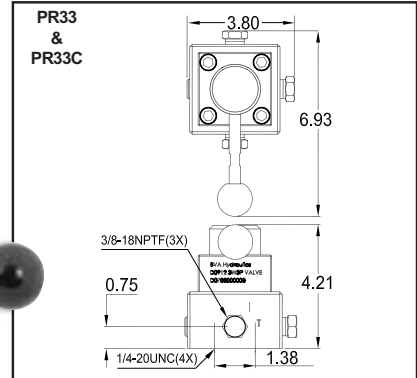
Pump Mounted Manifold Block

CMR2



Remote Mounted Valves

PR33



Valve Operation	Valve Type	Use With Cylinder	Model Number	Hydraulic Symbol	Schematic Flow path			Weight (kg)
Manual	3-way, 3 position, Tandem center	Single Acting	PR33					1,6
	3-way, 3 position, Closed center		PR33C					1,6
	3-way, 3 position, Tandem center, Locking		PR33L					2,6
	3-way, 3 position, Closed center, Locking		PR33CL					2,6
	4-Way, 3 position, Tandem center	Double Acting	PR43					1,6
	4-Way, 3 position, Closed center		PR43C					1,6
	4-Way, 3 position, Tandem center Locking		PR43L					2,6
	4-way, 3 position, Closed center, Locking		PR43CL					2,6

Cylinder Accessories

Saddle



Hose



Gauge



Base

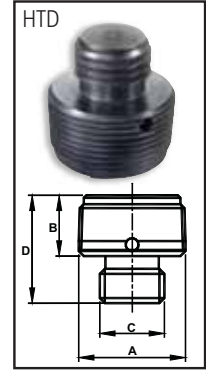
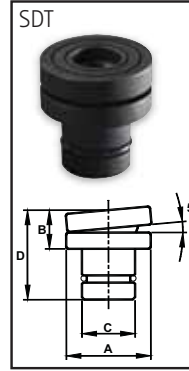
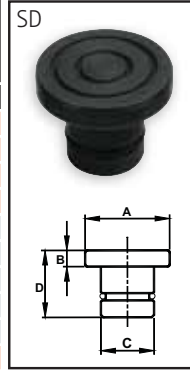




Cylinder Accessories

Saddle

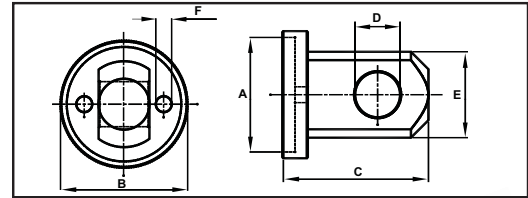
Model Number	Saddle Type	For use with Cylinder Capacity	Dimension (mm)				
			Ton	A	B	C	D
SD05	Grooved	5	25	6	17	20	
SD10		10	35	6	22	27	
SD15		15	38	7	22	30	
SD25		25	50	7	36	29	
SDT05	Tilt	5	25	17	17	31	
SDT10		10	35	16	22	37	
SDT15		15	38	19	22	40	
SDT25		25	50	19	36	40	
SDT55		50	70	33	70	33	
HTD10	Threaded	10	1 1/4"-11	1/2NPTF	26	1"-8UNC	45



Clevis

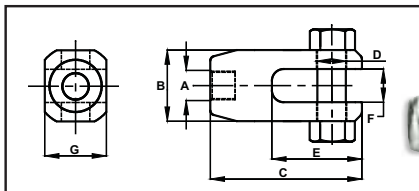
Model Number	Clevis Type	For use with Cylinder Capacity	Dimension (mm)						
			Ton	A	B	C	D	E	F
CEP05	Plunger	5	3/4"-16UNF	29	57	16	16	14	-
CEP10		10 + 15	1"-8UNC	43	84	22	19	25	-
CEP15									
CEP25		25	1 1/2"-16	57	97	32	22	38	-
CEB05	Base	5	38.6	44	54	16	7	29	-
CEB10		10	57.9	64	73	22	43	8	-
CEB15		15	70.4	76	73	22	43	10	-
CEB25		25	86.4	95	86	32	57	14	-
CP10*	Plunger & Base	only HP1006	M30x2	75	160	30	95	35	65

CEB 15-Base

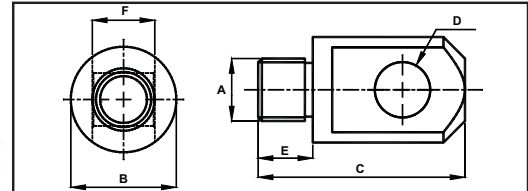


2-pc set with an adaptor

CP10-Clevis Plunger & Base



CEP 15-Plunger



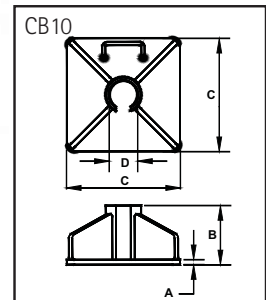
Hydraulic Oil

Model Number	Volume (liter)	Oil Type	Viscosity	For Pump
HV155	5			
HV685	5	Hydro HV68	68	Electric



Base

CB10



Model Number	For use with Cylinder Capacity	Dimension (mm)			
		A	B	C	D
CB05	5	8	118	200	39
CB10	10	10	120	230	58
CB15	15	12	122	254	70
CB25	25	16	126	280	87



Fittings

ACCESSORIES: FITTINGS

Model Number	Description	Picture	Drawing	Dimensions			
				A (mm)	B (mm)	C	D
CA3814	Fitting			35	23	Male: 1/4"-18NPTF	Female: 3/8"-18 NPTF
CB1438	Bushing			22	17	Male: 3/8"-18NPTF	Female: 1/4"-18 NPTF
FT101	2-way 90° Connector			46	26	Male: 3/8"-18NPTF	Female: 3/8"-18 NPTF
FT102	Coupling			30	26	Female: 1/4"-18NPTF	Female: 3/8"-18 NPTF
FT112	Coupling			48	29	Female: 1/2"-14NPTF	Female: 3/8"-18 NPTF
FT103	Coupling			30	26	Female: 3/8"-18NPTF	Female: 3/8"-18 NPTF
FT104	Male Connector			38	17	Male: 1/4"-18NPTF	Male: 1/4"-18 NPTF
FT114	Male Connector			38	19	Male: 3/8"-18NPTF	Male: 3/8"-18 NPTF
FT105	4-Way Connector			45	26	Female: 3/8"-18NPTF	Female: 3/8"-18 NPTF
FT106	3-Way Connector			45	26	Female: 3/8"-18NPTF	Female: 3/8"-18 NPTF
FT107	2-Way 90° Connector			35.5	26	Female: 3/8"-18NPTF	Female: 3/8"-18 NPTF
FT108	Adaptor			43	29	Male: 1/2"-14NPTF	Female: 3/8"-18 NPTF
FT118	Adaptor			43	29	Male: 1/4"-18NPTF	Female: 1/2"-14 NPTF



Confidence Built on Quality

ISO 9001

BVA products are manufactured through an International Quality Assurance System, ISO 9001/9002, which involves consistent observation of administration, management, manufacturing, and production



Products comply with the following industry standards

SAE 100

BVA hydraulic hoses comply with the Material Handling Institute's specification of minimum life cycles and minimum burst pressure rating.

control. Under this system, the related operations are monitored on all aspects of the production of BVA products from the purchase order, the assembly line, to shipping the order from the distribution center.

ANSI B30.1

The cylinders comply with load testing requirements and/or the safety factor for material yield strength, while still functioning properly and without oil leakage.

ANSI B40.1

Under ANSI standards, BVA pressure gauges meet criteria for grade A.

Cylinder Plunger Speed

- Formula: $V = A \div Q$

$$\frac{\text{Cylinder Plunger Speed (sec/cm)}}{\text{Oil Output Flow Rate (cm}^3\text{/min)}} = \frac{\text{Cylinder effective Area (cm}^2\text{)}}{\text{Oil Output Flow Rate (cm}^3\text{/min)}} \times \frac{60(\text{sec})}{1(\text{min})}$$

Force

- Formula: $F = P \times A$

$$\text{Force (kgs)} = \text{Hydraulic Working Pressure (kg/cm}^2\text{)} \times \text{Cylinder Effective Area (cm}^2\text{)}$$

Cylinder Oil Capacity

$$\text{Oil Capacity (cm}^3\text{)} = \frac{\text{Cylinder Effective Area (cm}^2\text{)}}{\text{Area (cm}^2\text{)}} \times \text{Cylinder Stroke (cm)}$$

Cylinder Effective Area

$$\text{Cylinder Effective Area} = \pi \times \frac{(\text{Cylinder Bore Diameter})^2}{4}$$

Where: $\pi = 3.14159$

1Kg=9.81N

1N=1KG-m/sec²

KEY TO MEASUREMENTS	
WEIGHT	
1 pound (lb.)	= 0.4536 kg
1 kg	= 2.205 lbs
1 ton (short, US)	= 2000 lbs
1 ton (metric)	= 2205 lbs
VOLUME	
1 in ³	= 16.387 cm ³
1 cm ³	= 0.061 in ³
1 liter	= 61.02 in ³
	= 0.264 gal (US)
1 gal (US, liquid)	= 3.785 liter
	= 231 in ³
	= 3785 cm ³
OTHER MEASUREMENTS	
1 in	= 25.4 mm
1 mm	= 0.039 in
1 in ²	= 6.452 cm ²
1 cm ²	= 0.155 in ²
PRESSURE	
1 psi (lb/in ²)	= 0.069 bar
1 bar	= 14.5 psi
1 kPa	= 0.145 psi
TEMPERATURE	
0°F	= (0°C x 1.8) + 32
0°C	= (0°F - 32) / 1.8

INFO

TWO-YEAR LIMITED WARRANTY FOR BVA BRAND HYDRAULIC EQUIPMENT

For a period of two (2) year from the date of purchase, Shinn Fu Europe B.V. will repair or replace, at its discretion, without charge, any of its products which fails due to defect in material or workmanship, or which fails to conform to any implied warranty not excluded hereby.

Performance of any obligation under this warranty may be obtained by returning the warranted product, freight prepaid, to Shinn Fu Europe B.V., Warranty Service Department, Tussenriemer 20, 4704 SR Roosendaal, The Netherlands.

Except where such limitations and exclusions are specifically prohibited by applicable law.

(1) THE CONSUMER'S SOLE AND EXCLUSIVE REMEDY SHALL BE THE REPAIR OR REPLACEMENT OF DEFECTIVE PRODUCTS AS DESCRIBED ABOVE, AND

(2) SHINN FU EUROPE B.V. SHALL NOT BE LIABLE FOR LOSS WHAT SO EVER, AND

(3) THE DURATION OF ANY AND ALL EXPRESSED AND IMPLIED WARRANTIES, INCLUDING WITHOUT LIMITATION, ANY WARRANTIES OF MERCHANTABILITY AND FITNESS FOR A PARTICULAR PURPOSE, IS LIMITED TO A PERIOD OF TWO (2) YEARS FROM THE DATE OF PURCHASE.



Heavy duty, heat treated, grooved saddle provides better surface traction during operation.

Steel stop ring for ram over travel protection.

Plunger wiper reduces contamination and extends the cylinder-life.

Collar fixture threads.

Cylinders are burnish rolled for a smooth precision mirror finish, which reduces scoring and prolongs seal life.

Industrial hard chrome plated ram prevents scratching and corrosion.

One piece steel ram stopper for extra strength and enhanced over travel protection.

One piece high grade alloy bearing for side load protection and long life.

Polyurethane cup seal provides optimum performance.

Rectangular return spring design results in even distribution of the load, which helps to eliminate spring breakage and creates quicker retraction.

High flow ball coupler provides more flow than conventional coupler.



SHINN FU EUROPE B.V.

e-mail: sales@sfeu.nl, www.shinnfu.com

We do not accept responsibility for mistakes, errors or modifications in dimensions and or specifications. We also reserve the right to modify product or to change specifications without prior notice.

Printed in The Netherlands © Copyright 2010