



FIJNMECHANISCHE INDUSTRIE  
NOORD-NEDERLAND BV



# DEFENSE

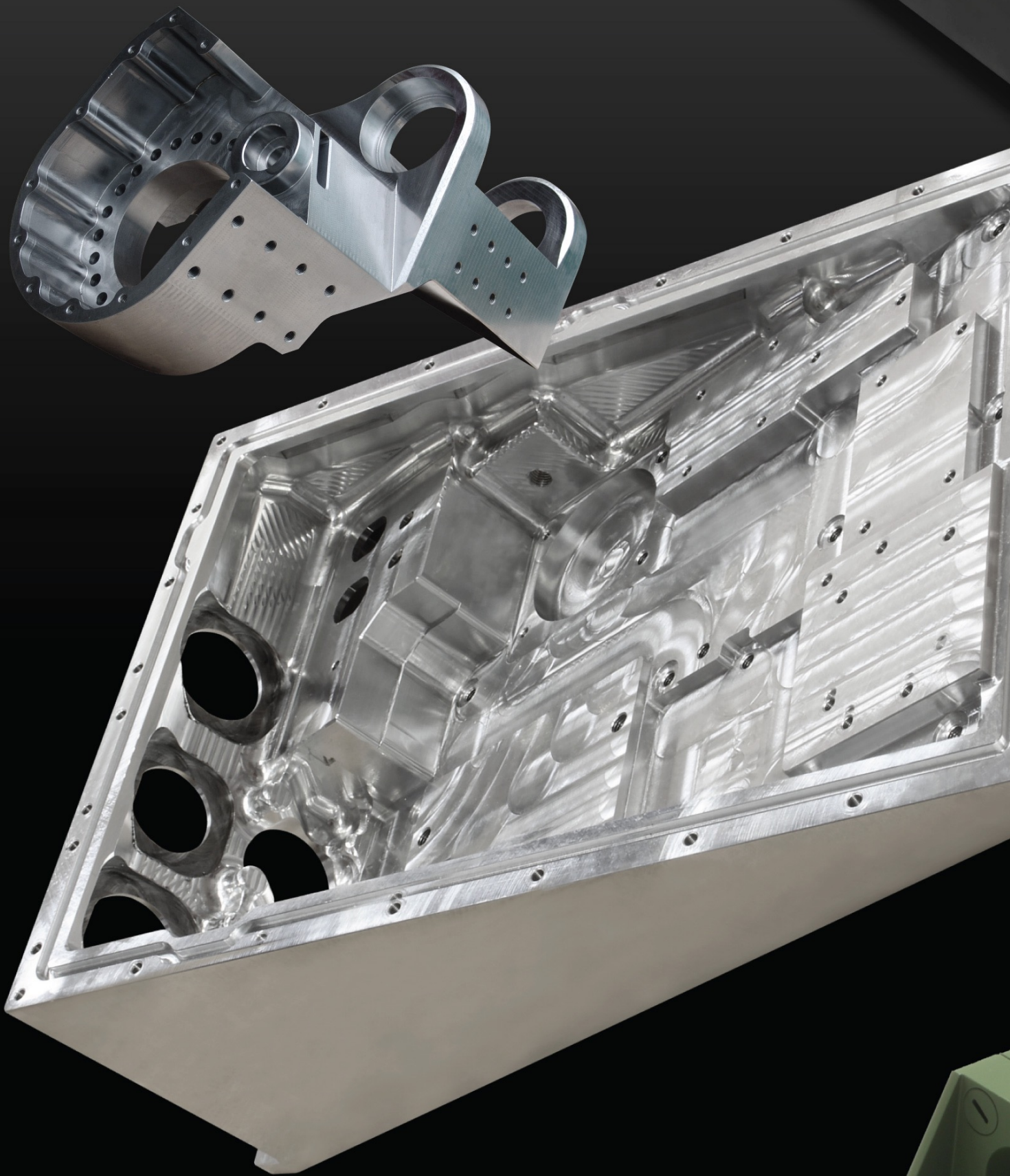
HIGH-TECH COMPONENTS FOR DEFENSE APPLICATIONS



English

**finn.nl**

EDITION 2017





HIGH PRECISION PRODUCTS  
— SINCE 1980 —

## DEFENSE

**F**inn B.V. (Fijnmechanische Industrie Noord-Nederland) has over 35 years experience in machining high quality precision products from metal and plastic, for example the defense industry.

Finn B.V. offers a complete engineering solution, from precision engineering, manufacturing, sub-assembly to complete assembly. Finn B.V. uses the latest CAD/CAM, CNC machining, finishing and measurement technologies.

During the recent years Finn B.V. has produced a wide range of high-tech components for defense applications, such as components for the turret of the CV90 infantry fighting vehicle.

Additionally Finn B.V. obtained the dealership of the RP Strike-M vehicle. This compact and dynamic vehicle is suitable for reconnaissance, security, defense, fire department, ambulance and police purposes in difficult terrain where flexibility and speed are required.

[www.finn.nl](http://www.finn.nl)



# Defense

**D**uring the recent years Finn B.V. produced a wide range of high-tech components for defense applications. Reliable high quality material is of great importance as well as high-precision of the parts being used. To do so Finn B.V. is using the latest CAD/CAM, CNC machining, finishing and measurement technologies such as 5-axis simultaneous milling.

## **Combat Vehicle 90**

For the CV90 infantry fighting vehicle, Finn made parts for the engines of the turret and gun, including the associated control units. The Stridsfordon 90 (Combat Vehicle 90 or CV90) is a family of Swedish tracked combat vehicles. Developed specifically for the Nordic sub-arctic climate, it has very good mobility in snow and wetlands while carrying and supporting eight (later versions were reduced to six) fully equipped soldiers. Other variants include Forward Observation, Command and Control, Anti-air, Armoured Recovery, Electronic Warfare and so forth. It is still produced.



**CV90** | Place of origin: Sweden, In service since: 1993, Weight: 23-35 tonnes, Length: 6.55 meters, Width: 3.1 meters, Height: 2.7 meters, Speed: 70 km/h, Operational range: 320 km, Transmission: Automatic, Engine: 550-810 hp, Crew: 3 (commander, gunner, driver) 6 or 8 troopers.





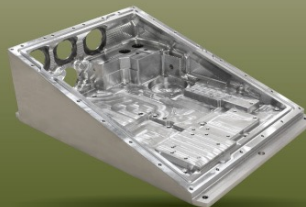
 **Finn defense components**



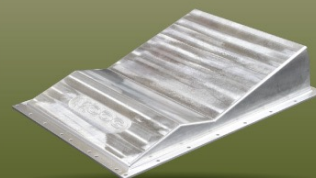
 **Hinge Mechanism**



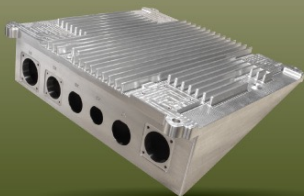
 **Speedometer**



 **MC100 Base**



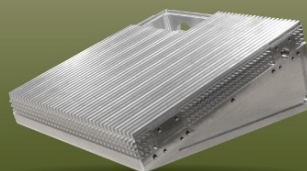
 **MC100 Lid**



 **MC500 Base**



 **MC500 Lid**



 **MC1000 Base**



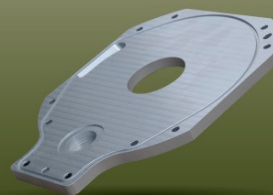
 **MC1000 Lid**



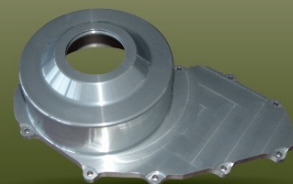
 **Gearbox**



 **Housing**



 **Plate**



 **Housing cover**



### **RP Strike-X**

2-persons - Power: 900 cc, 154 hp. - Dry weight: 1790-1990 lb. - Dimensions (LxWxH): 131x64x66 in. / 132x72x67 in. - Payload capacity: 1500 lb. - Rear bed capacity: 1000 lb. - Towing capacity: 1500 lb. - Optional front rack: 250 lb.



### **RP Strike-M**

2-persons / 4-persons (M4) - Power: 976 cc, 101 hp. - Dry weight: 1700-1950 lb. - Dim. (LxWxH): 129x64x74.2 in. / 159x64x78 in. (M4) - Payload capacity: 1500 / 2000 lb. - Rear bed capacity: 1000 lb. - Towing capacity: 1500 lb. - Optional front rack: 250 lb.



### **RP Strike-C**

2-persons / 4-persons (C4) - Power: 976 cc, 85 hp. - Dry weight: 1700-1950 lb. - Dimensions (LxWxH): 123x60x72 in. / 152x60x76 in. (C4) - Payload capacity: 1500 / 2000 lb. - Rear bed capacity: 600 / 1000 lb. - Towing capacity: 1500 lb. - Optional front rack: 250 lb.



### **RP Strike-Defender**

2-persons - Power: 976 cc, 72 hp. - Dry weight: 1414 lb. (estimated). - Dimensions (LxWxH): 120x62x76 in. - Payload capacity: 1500 lb. - Rear box capacity: 1000 lb. - Towing capacity: 2000 lb. - Optional front rack: 250 lb.



## **RP Strike-M™** variant Can-Am Maverick

Meet the dynamic and compact RP Strike vehicles from RP Advanced Mobile Systems (RPAMS). Thanks to its size and excellent flexibility, these buggies are suitable for the most diverse tasks and challenges. Sand, stone, gravel, mud, snow and steep slopes, no terrain is too ambitious for these dynamic and powerful vehicles. Available in both 2-seater and 4-seater, including the possibility of attaching an extension with two additional wheels (and thus extra length and space), the RP Strike vehicles are suitable to all requirements. The RP Strike-C, RP Strike-M, RP Strike-X and RP Strike-Defender vehicles are suitable for reconnaissance, security, defense, fire department, ambulance and police purposes in difficult terrain where flexibility and speed are required. For leisure purposes as hunting (various additional racks and holders) and off-roading, RP Strike vehicles are also a perfect solution.

In addition to an extensive fleet of vehicles, the RP Strike vehicles have an impressive option list. Several run-flat tire types with different profiles ensure that the vehicle will continue to move forward under even the most difficult conditions. Different types of shock absorbers provide different levels of comfort and capacity. Tracks, light bars, winches, stretchers, water extinguishers and various storage systems are also among the possibilities. There is also a wide range of different wheels, colors and camouflage prints available.

RP Strike vehicles are equipped with specific (for example run-flat) tires for every type of job, weather and landscape. RP SOF Series Tires are specifically designed and engineered for heavier payloads, wheel protection and survivability. RP SOF Spartan Tires are the perfect tire for hunters, ranchers, government agencies, oil fields, pipeline and power line companies around the world. RP Delta FX Tires are engineered for current high horsepower vehicles such as the Can Am Maverick and Commander. The Apache 360 LT Track System is designed for better traction on snow and other terrains.



RP Strike vehicles are suitable for reconnaissance, security, defense, fire department, ambulance and police purposes in difficult terrain where flexibility and speed are required.



Tracks, light bars, winches, stretchers, water extinguishers and various storage systems are also among the possibilities.



**RP STRIKE-M  
VIDEO**  
SCAN WITH PHONE



## FIJNMECHANISCHE INDUSTRIE NOORD-NEDERLAND BV

### *Machining Industry Northern Netherlands*

#### **Distribution & Assembly**

Glasblazer 9  
9502 KB Stadskanaal  
The Netherlands

#### **Factory & Research**

Veenstraat 11  
9502 EZ Stadskanaal  
The Netherlands

#### **Correspondence Address**

P.O. Box 435  
9500 AK Stadskanaal  
The Netherlands

#### **Contact**

Phone +31 599 622 216  
Fax +31 599 621 603  
Email [info@finn.nl](mailto:info@finn.nl)  
Website [www.finn.nl](http://www.finn.nl)

*Publication jan. 2017*

