



***Some of
our
military
products***

TAM AS

**Andslimoen
N-9325 Bardufoss
Norway**

**Phone (+47) 77 83 34 14
Fax. (+47) 77 83 45 00
e-mail : tam@tam.no
Website: www.tam.no**

NEWS

TAM AS Information

NEWS

New expandable TAM shelter to LINK16

Lightweight expandable, insulated sandwich shelters are designed and fulfil requirements according to ISO 1496 1D 10 ft. container and they are approved by DnV and Thales.

The shelters are supplied with silent diesel generator and HVAC systems and fulfil the requirements according to STANAG 2895 climatic zone A1-C1.

The shelters meet most relevant MIL-STD, Stanag-, DIN- and ISO standards.



**TAM shelter type-68000 during FAT to our client Thales
Further information on request.**



TAM AS

**Andslimoen
N-9325 Bardufoss
Norway.**

Phone (int. +47)77833414

Fax.....(int. +47)77834500

www.tam.no

e-mail tam@tam.no

NEWS

TAM AS Information

NEWS

Communication Shelter for HMMWV Shelter type 63000 (basic version)

TAM AS has developed a new type of shelters special designed for the military vehicle HMMWV (M1113 shelter carrier), with focus on extreme



hot climate and low noise level. **TAM AS** has taken forward a new generation silent power generator to meet higher requirements for ambient temperature and low noise level. The generator set is mounted on slides for easy access and maintenance. The shelters are delivered as a multi purpose version and

are designed for easy and rapid change to different communication variants.

The shelters are produced in own designed, high quality, insulated, self supporting glued sandwich material, which gives the shelters advanced features as low weight, good insulation, high strength and almost none maintenance cost.



TAM AS

Andslimoen

N-9325 Bardufoss

Norway.

Phone (int. +47)77833414

Fax.....(int. +47)77834500

www.tam.no

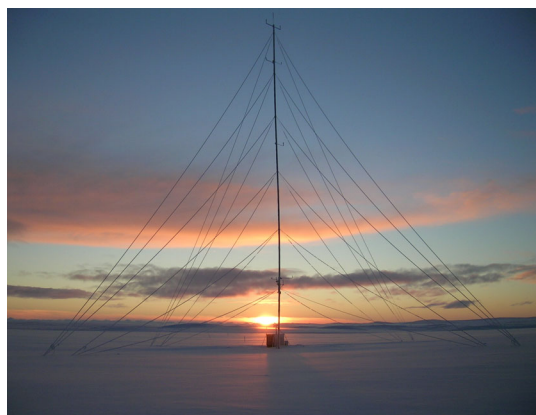
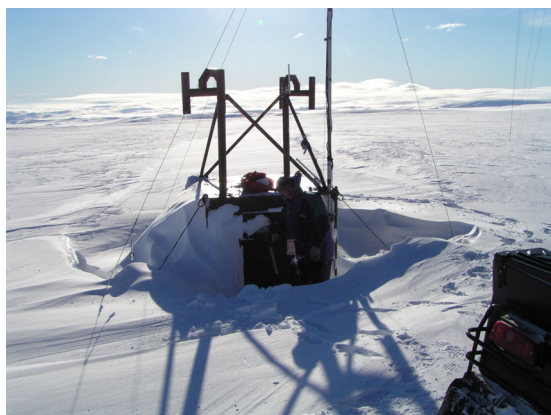
e-mail tam@tam.no

NEWS

TAM AS Information

NEWS

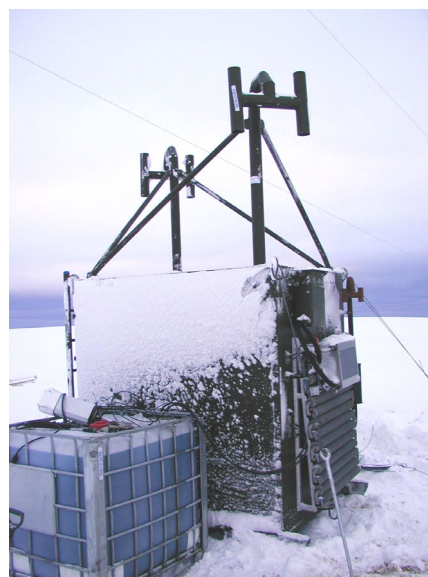
Power Supply Shelter Shelter type: 58000



TAM AS has produced Power Supply Shelters for use under Arctic weather condition and no support during winter season. These shelters are housing equipment for weather analysis, and supply clients equipment with 12VDC, 24VDC and 230 VAC

Basic shelters are equipped with:

- 5,7 KVA generator set
- Battery chargers
- Battery bank
- Cooling and ventilation system for extreme weather conditions

**TAM AS**

**Andslimoen
N-9325 Bardufoss
Norway.**

Phone (int. +47)77833414

Fax.....(int. +47)77834500

www.tam.no

e-mail tam@tam.no

NEWS

TAM AS Informatic

NEWS

MILITARY SHELTERS - 71000 Mobile Command Centre

**Shelter type 71000 is designed
for flexible integration of
equipment.**

Operation World Wide.

Basic spesification:

**HAVAC designed for Climate
zone A1-C2 according
to STANAG 2895**

Heating 3 kW cooling 5,5 kW

Netto weight 850 kg

Max weight 1999 kg (2500 kg)

**The shelters can fast be
removed chassis when needed.**

**Designed for sling load as well
as all other kind of transport.**

NSN : 4210-2190-1940



TAM's AC HVAC 556H system

TAM AS

**Andslimoen
N-9325 Bardufoss
Norway.**

Phone (int. +47)77833414

Fax.....(int. +47)77834500

www.tam.no

e-mail tam@tam.no

NEWS

TAM AS Information

NEWS

Shelter for Observation and Monitor Radiation

TAM AS has developed a new type of shelters special designed for the Norwegian Radiation Protection Authority with focus on all kind of transport and rapid deployment when needed.



In case of emergency the shelter is self supporting with generator etc.

The shelters are produced in own designed high quality insulated, self supporting glued sandwich material, which gives the shelters advanced features as low

weight, good insulation, high strength and almost none maintenance cost. Besides natural monitoring equipment the shelter is furnished as an ad-



vanced laboratory according to clients demands.

Internal views and Equipment



TAM AS

**Andslimoen
N-9325 Bardufoss
Norway.**

Phone (int. +47)77833414

Fax.....(int. +47)77834500

www.tam.no

e-mail tam@tam.no

NEWS

TAM AS Information

NEWS

Expandable Mobile Communication Centre type: 56000



Incorporated hydraulic jack legs are used for levelling the shelter.



The back wall of the cell at the rear is made of PVC-fabric, which can be replaced when the shelter is connected to another shelters.



TAM AS has once again develop and produce a new type of Expandable Mobile Communication Centre.

The shelter is primarily designed to meet the Hock lift System according to DIN 30722, but it also meet requirements according to ISO 20 feet container handling systems.

In expanded condition the shelter has:

- One big cell with working places for 6 people.
- One cell on left hand side which is used as store- and bedroom.
- One cell at the rear which is used as entryway to the shelter

The shelter is equipped with AC/DC, fibre optics, inverter air-condition, complex network and electrical installation.

This shelters meets all requirements to Rapid Deployment. Two people establish the Communication Centre is within 5 minutes.

TAM AS

**Andslimoen
N-9325 Bardufoss
Norway.**

Phone (int. +47)77833414

Fax.....(int. +47)77834500

www.tam.no

e-mail tam@tam.no

NEWS

TAM AS Information

NEWS

TAM EX = TAM EXpandable

20' Expandable Shelter hydraulic operated



Sidewall/roof opening



Side floor lowering



Internal view one side

TAM EX is a new type of hydraulic operated Expandable Shelter designed and produced by **TAM AS**. The shelter has a 20' ISO interface and designed for LHS NATO handling system. **TAM EX** has 2 expandable sides. After expansion the shelter have one open room on approximately 5.6m x 6.3m - over 35m² flat floor. Wide ranges of options are available.



Expanded shelter. Note full height at sidewall

TAM AS

**Andslimoen
N-9325 Bardufoss
Norway.**

Phone (int. +47)77833414

Fax.....(int. +47)77834500

www.tam.no

e-mail tam@tam.no

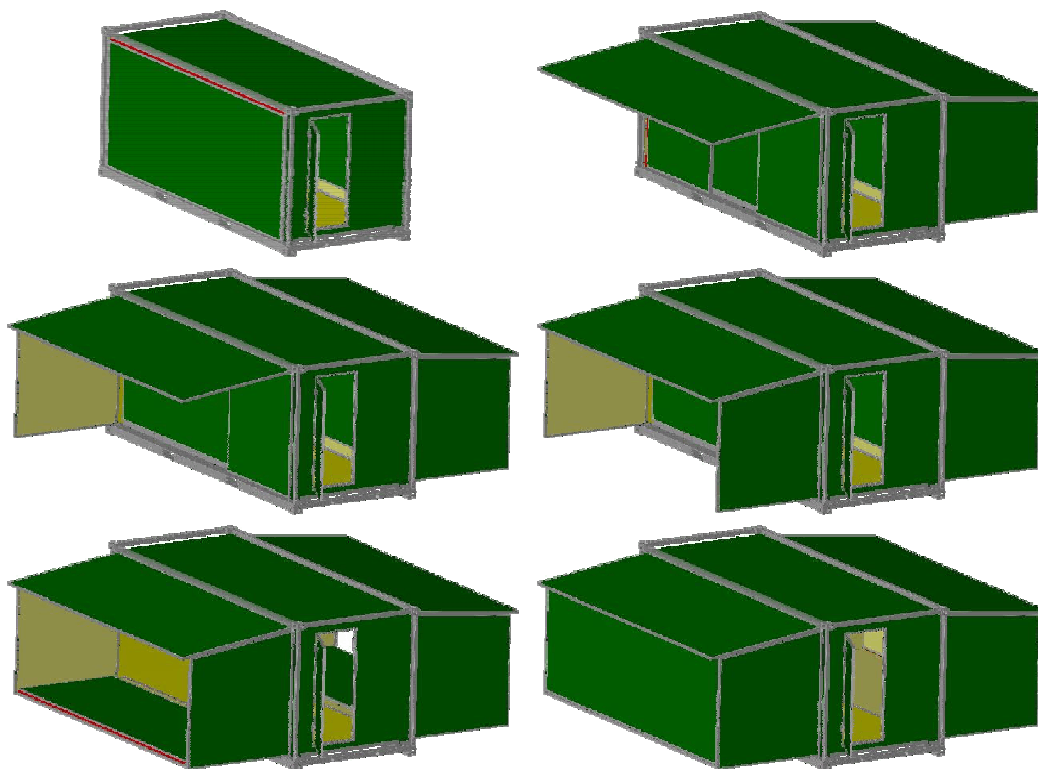
NEWS

TAM AS Information

NEWS

TAMEX

20' Expandable Shelter



TAMEX is a new type of expandable shelters designed and produced by **TAM AS**. The shelter is built on a 20' ISO interface, and has 2 expandable sides. After expansion the shelter have one open room on approximately 5.6m x 6.3m - over 35m² flat floor. The shelter can be delivered with or without hook lift system.

It is also possible to combine the **TAMEX** with our expandable DCM or Brief solutions.

The expansion is hydraulic assisted. For further information, please give us a call or mail us.

TAM AS

Andslimoen
N-9325 Bardufoss
Norway.

Phone (int. +47)77833414
Fax.....(int. +47)77834500
www.tam.no
e-mail tam@tam.no

TAM AS Information

EXPANDABLE MILITARY SHELTERS DCM—Deployable Communication Module Expandable version 48000

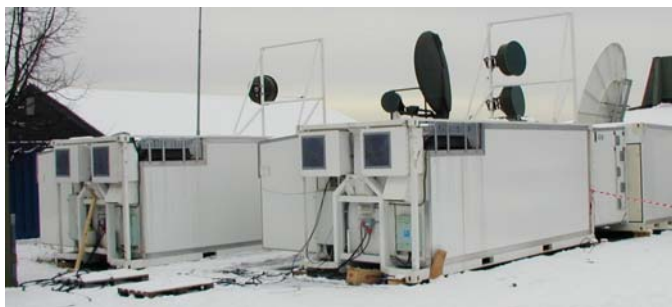


At the end of year 2000 TAM AS signed a contract, development and production of a new type of expandable 20' shelter in close collaboration with NODECA. These shelter meet our customer's demand for advanced shelters features with large room capacity when operating. To day these shelters are available also in 3x1 and 3,5x1 expandable versions.

The shelters meet all requirements to Rapid Deployment and has integrated hook-lift system and can also be transported as a 20' ISO containers.



Due to the shelters extreme low weight, 2 fully equipped shelters can be transported in one C-130 Hercules. The DCM (also called DKM and GIS) module is a part in a communication system where several of other TAM shelters are included.



TAM AS

Andslimoen
N-9325 Bardufoss
Norway.

Phone (int. +47)77833414

Fax.....(int. +47)77834500

www.tam.no

e-mail tam@tam.no

MILITARY SHELTERS

Expandable Mobile Shelter type:42000

During 1999/2000 TAM AS took forward a "New Generation" expandable shelter to meet other Clients specific demands. The new shelter is based on our CH21600 version



as well as our 19 years experience in producing high quality and long lasting military mobile shelters.

The hydraulic jack legs system runs on 24 Volt DC from internal batteries. It is also possible to connect external power if needed (NATO system).



Hydraulic Jack Leg and demountable rolles.

TAM AS

Andslimoen
N-9325 Bardufoss
Norway.

Phone (int. +47)77833414

Fax.....(int. +47)77834500

www.tam.no

e-mail tam@tam.no

MILITARY SHELTER Sattelite Communications

Early January 2002 TAM AS was asked by our client FLO/IKT to participate making the impossible possible. A large complicated satellite communication system should meet new requirements - designed for rapid deployment, - easy transport, - no foundation, - safe and fast erection and quick securing, - done by 2-3 persons within a few hours.



Production and testing



Preparing dispatch



The system nearly finished

The whole shelter is made in high quality lightweight sandwich material designed and produced by **TAM AS**. A thanks to FLO/IKT for excellent leadership and all other collaborators involved in the project and thank you for choosing us as shelters manufacture !!



April 2002 on site (international operations)
The "impossible" was made possible - no foundation and erection within 4 hours !

TAM AS

Andslimoen
N-9325 Bardufoss
Norway.

Phone (int. +47)77833414
Fax.....(int. +47)77834500
www.tam.no
e-mail tam@tam.no

TAM AS Information

MILITARY SHELTERS - Deployable Communication Module

During 1999 TAM AS made several DCM-Shelters which are based on experience with our 20' expandable shelter with 20' ISO interfaces and integrated hook-lift



system. The shelters were produced in close collaboration with NODECA and TAM AS prepared

the shelters for other installation - carried out by our client. The shelters are in KFOR service.



Client : NODECA (FTD)

TAM AS

Andslimoen
N-9325 Bardufoss
Norway.

Phone (int. +47)77833414

Fax.....(int. +47)77834500

www.tam.no

e-mail tam@tam.no

TAM AS Information

MILITARY SHELTERS - Mobile Kick Down and Flat Pack Version



A Lightweight flat-packed
large shelters assembled by
hands and joined together
with electrical screw driver in
less than a half hour !!!!

*Shielded versions also available.
Further information at : TAM AS*

TAM AS

Andslimoen
N-9325 Bardufoss
Norway.

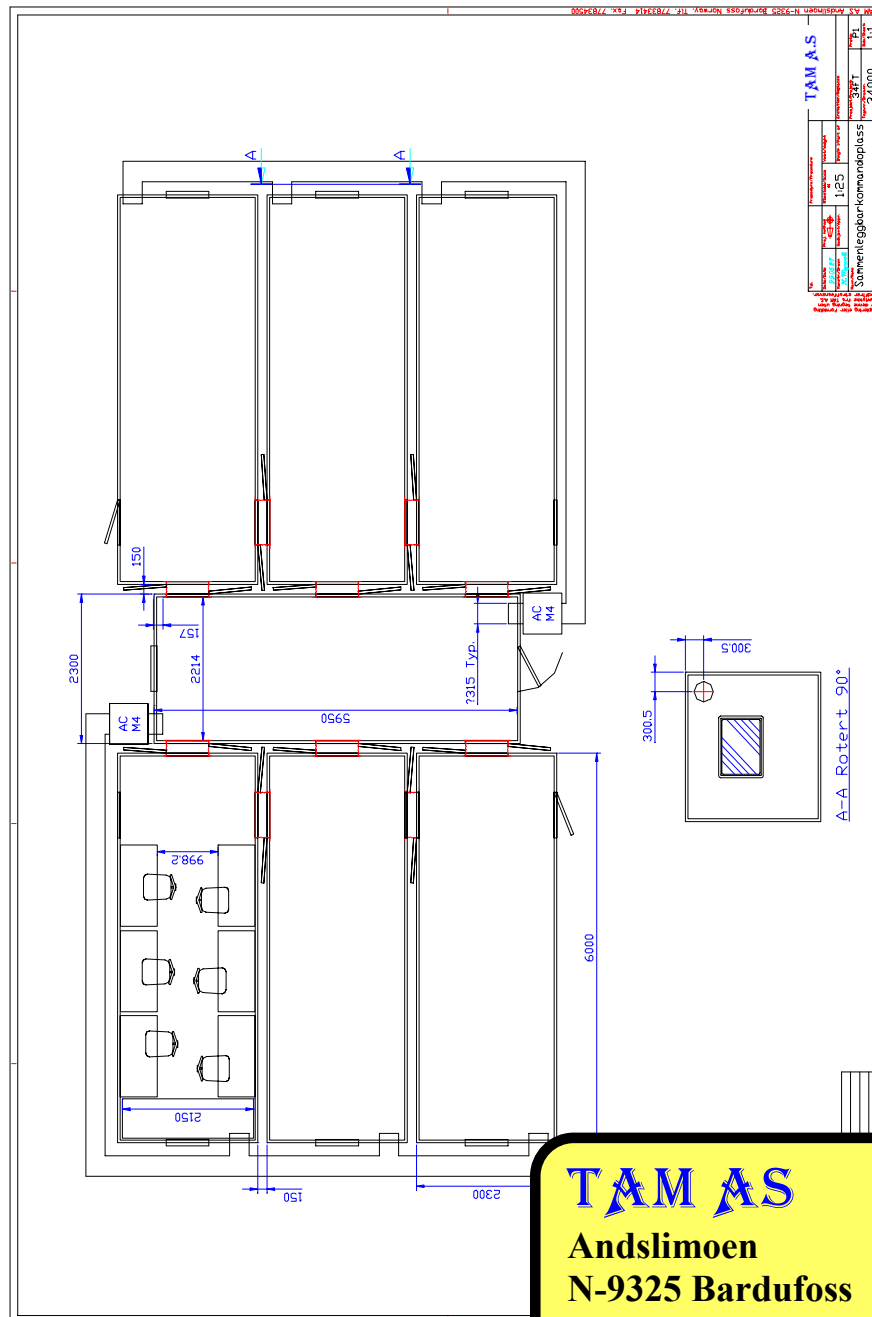
Phone (int. +47)77833414

Fax.....(int. +47)77834500

www.tam.no

e-mail tam@tam.no

MILITARY SHELTERS - Mobile Kick Down and Flat Pack Version



TAM AS

Andslimoen
N-9325 Bardufoss
Norway.

Phone (int. +47)77833414

Fax.....(int. +47)77834500

www.tam.no

e-mail tam@tam.no

MILITARY SHELTERS - Mobile radar shelter (3DG)

The mobile radar shelter is designed and produced by **TAM AS** in close collaboration with our client. The whole shelter is produced in advanced self supporting aluminium sandwich material to reduce weight and obtain good insulation and a long lasting mobile unit.



TAM AS

**Andslimoen
N-9325 Bardufoss
Norway.**

Phone (int. +47)77833414

Fax.....(int. +47)77834500

www.tam.no

e-mail tam@tam.no

TAM AS Information

MILITARY SHELTERS Mobile Control Centre (20 feet unit)

TAM AS have designed and produced a great number of different shelters to meet the clients requirements.

Shown shelters are mainly designed to be truck mounted and handled by forklifts. The shelter is divided into separate rooms, where the main entrance room is used to store antennas, generator sets, cables etc.



The main room contains communications etc. which gives excellent working facilities. Several options are available.

For further information contact
TAM AS

TAM AS

Andslimoen
N-9325 Bardufoss
Norway.

Phone (int. +47)77833414

Fax.....(int. +47)77834500

www.tam.no

e-mail tam@tam.no

TAM AS Information

MILITARY SHELTERS - Mobile Tactical Operation Centre-MTOC



The expandable MTOC arrives and within short time the Head Quarter is established. The expanded KO- and Brief-shelters almost double the floor capacity and can easily

be joined together when needed. Foldable platforms gives excellent access between the shelters. Incorporated hydraulic jack legs are used for levelling. Many option are available to meet special requirements



All design work and production made by TAM AS



Loading into C130

TAM AS

Andslimoen
N-9325 Bardufoss
Norway.

Phone (int. +47)77833414

Fax.....(int. +47)77834500

www.tam.no

e-mail tam@tam.no

MILITARY SHELTERS - Mobile Tactical Operation Center-MTOC



All **TAM's** products are made to meet great challenges - so also our **MTOC** - even expanded. The photos illustrates which strength we put into our light weight sandwich shelters to meet military demands.



TAM AS

**Andslimoen
N-9325 Bardufoss
Norway.**

Phone (int. +47)77833414

Fax.....(int. +47)77834500

www.tam.no

e-mail tam@tam.no

MILITARY SHELTERS - Mobile Tactical Operation Centre MTOC



Shelter used as temporary office Military Police

TAM AS have developed an expandable military shelter (**Brief-Shelter**) which can be in operation within minutes after grounded and is leveled by integrated hydraulic jacklegs.

The shelter is primarily designed to meet the NATO Hocklift System but it also meet requirements according to ISO 20 feet container handling systems.

The shelter have a wide range of facilities and options.



Establishing camp

TAM AS

Andslimoen
N-9325 Bardufoss
Norway.

Phone (int. +47)77833414

Fax.....(int. +47)77834500

www.tam.no

e-mail tam@tam.no

MILITARY SHELTERS - Mobile Tactical Operation Centre-MTOC



The **Brief Shelter** (above) is expanded within few minutes after grounded and gives excellent working facilities to the personnel. The shelter is also supported with a fixed security office as well as other specific

demands. Several options available

The expandable **KO-Shelter** is in full operation also when not expanded and during transport.

TAM AS

Andslimoen
N-9325 Bardufoss
Norway.

Phone (int. +47)77833414

Fax.....(int. +47)77834500

www.tam.no

e-mail tam@tam.no

MILITARY SHELTERS - Mobile Tactical Operation Centre-MTOC

The **Mobile Command Centre** -(KO- and Brief -
Shelters) developed and produced by **TAM AS**, are able

to transport in
one aircraft.



The Shelter
system is also
named MKP -
Mobile
Kommando
Plass

The weight of the
shelters, fully
equipped with all
facilities are very
low.



TAM AS

Andslimoen
N-9325 Bardufoss
Norway.

Phone (int. +47)77833414

Fax.....(int. +47)77834500

www.tam.no

e-mail tam@tam.no

MILITARY SHELTERS - **ARTHUR** -**ART**illery **HU**nting **R**adar **MAMBA** - **M**obile **A**rtillery **M**onitoring **B**attlefield Radar



Radar Shelter type 25000 - **ARTHUR** / **MAMBA**, where **TAM AS** was responsible for construction and production of the shelters including some installations as well as all interfaces to main contractor's equipments.



TAM AS

Andslimoen
N-9325 Bardufoss
Norway.

Phone (int. +47)77833414

Fax.....(int. +47)77834500

www.tam.no

e-mail tam@tam.no

MILITARY SHELTERS

Shelters on BV206

A custom made shelter designed and produced by **TAM AS** to our client :
NORWEGIAN ARMY MATERIEL COMMAND.
The whole shelter is produced in sandwich panels with aluminium skin and high quality core to meet



low Life Cycle Cost.
The shelters can be delivered
with or without shielding.
The photo shows our
version : 18HF.

TAM AS

Andslimoen
N-9325 Bardufoss
Norway.

Phone (int. +47)77833414
Fax.....(int. +47)77834500
www.tam.no
e-mail tam@tam.no

MILITARY SHELTERS - Shelters on BV206

Our first shelters to BV206 were delivered in 1990 by winning a contract to NORWEGIAN ARMY MATERIEL COMMAND. The whole shelters were produced in high quality sandwich panels and in shielded version.



These shelters have been extremely tested by hard work in almost 10 years. The results are most satisfactory.

TAM AS

**Andslimoen
N-9325 Bardufoss
Norway.**

Phone (int. +47)77833414

Fax.....(int. +47)77834500

www.tam.no

e-mail tam@tam.no

TAM AS Information

MILITARY SHELTERS for Integrated Divisional Operation Centre IDOC

The shelter is designed and produced by **TAM AS** in glued sandwich material with aluminium skin on both sides with high quality core which gives high strength, low weight and excellent insulation.



The whole shelter is designed to meet very low Life Cycle Costs (LCC).

Client :



KONGSBERG
DEFENCE & AEROSPACE

Version : 30KG

TAM AS

Andslimoen
N-9325 Bardufoss
Norway.

Phone (int. +47)77833414

Fax.....(int. +47)77834500

www.tam.no

e-mail tam@tam.no

MILITARY SHELTERS - Mobile Transport and Command Post

Almost all of TAM's products are made to meet our clients special requirements.



Shown
military
towing
vehicle have
also many
special
facilities

which reduce the need of personnel working
as well as get the job done faster and safer.



Inside view aft part.

For further
information contact :

TAM AS

Andslimoen
N-9325 Bardufoss
Norway.

Phone (int. +47)77833414

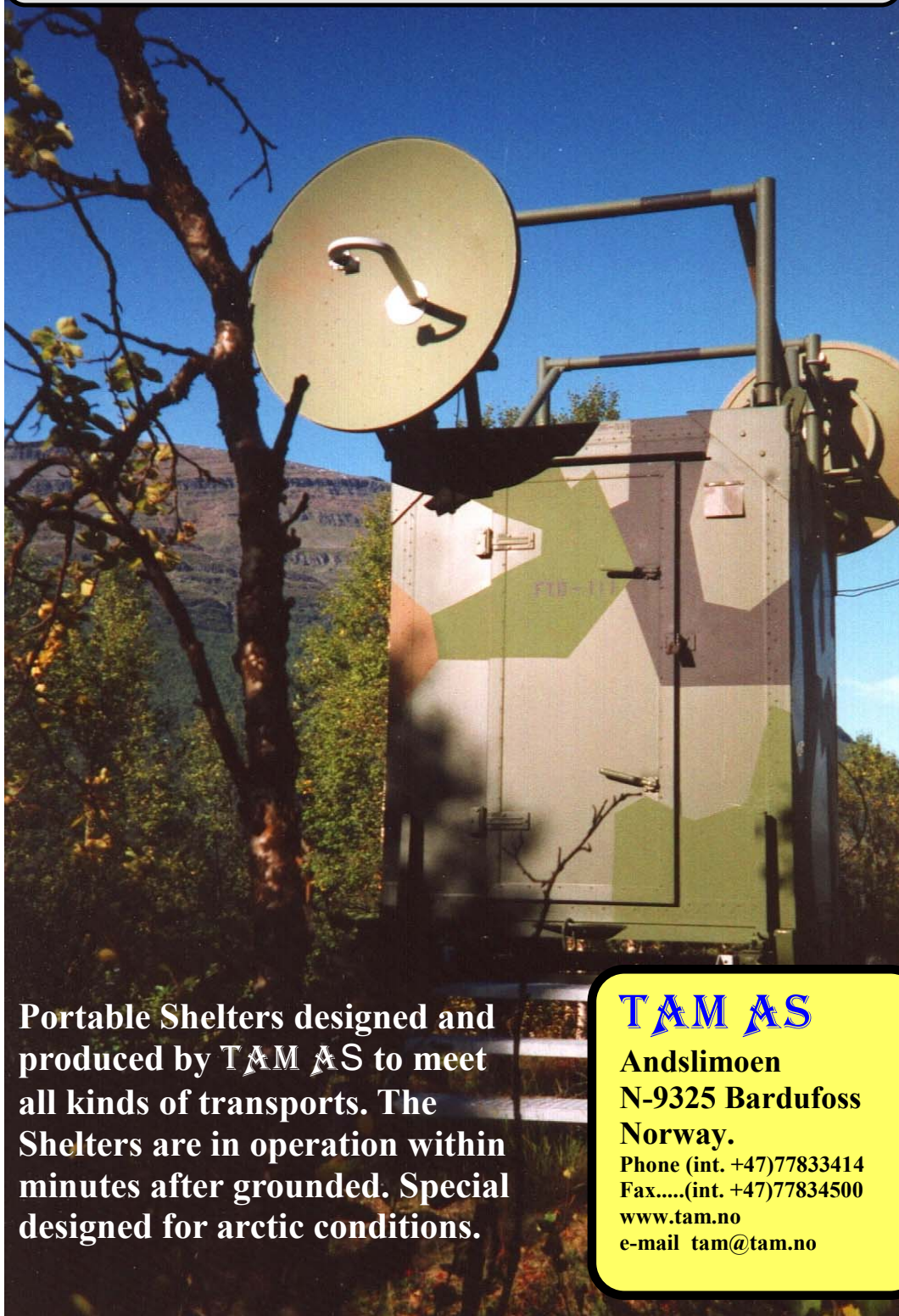
Fax.....(int. +47)77834500

www.tam.no

e-mail tam@tam.no

MILITARY SHELTERS

Communication



Portable Shelters designed and produced by TAM AS to meet all kinds of transports. The Shelters are in operation within minutes after grounded. Special designed for arctic conditions.

TAM AS

**Andslimoen
N-9325 Bardufoss
Norway.**

Phone (int. +47)77833414

Fax.....(int. +47)77834500

www.tam.no

e-mail tam@tam.no

MILITARY SHELTERS - Mobile Command Center (MCC)



The shelters are designed and produced by **TAM AS** to meet clients specifications and all kind of transportation. The trailers are special design and are delivered as option.

TAM AS

Andslimoen
N-9325 Bardufoss
Norway.

Phone (int. +47)77833414

Fax.....(int. +47)77834500

www.tam.no

e-mail tam@tam.no

MILITARY SHELTERS - Communication

Communication shelters have been produced
by TAM AS since 1984.



Due to our high quality and good design, the shelters are in perfect condition without special

maintenance after many years use under very hard climate conditions.



The shelters can quickly and easily be removed by helicopters.

TAM AS

Andslimoen
N-9325 Bardufoss
Norway.

Phone (int. +47)77833414

Fax.....(int. +47)77834500

www.tam.no

e-mail tam@tam.no

MILITARY SHELTERS - Mobile Command Center

During 1999 TAM AS was involved in modification on some of our older produced mobile shelters. All in close collaboration with our client NODECA. All units were prepared to new equipments and to meet other demands.



At workshop



The shelters are in **KFOR** service.



On site



On site

Client : NODECA (FTD)

TAM AS

Andslimoen
N-9325 Bardufoss
Norway.

Phone (int. +47)77833414

Fax.....(int. +47)77834500

www.tam.no

e-mail tam@tam.no

TAM AS Information

57000 — MKM Mobile Communication Module



Early 2003 TAM AS signed a contract to develop and produce a new type of communication module. These shelters meet our customer need for mobility. The cabin is designed to be towed behind any military or civilian vehicle. The tow bar is adjustable in height. The shelters dimensions are also according to air freight in C-130 Hercules.

The cabin is made in lightweight sandwich panels, which leads to low weight and high loading capacity. The MKM is EMC shielded.

The MKM Shelter is equipped with AC/DC, fibre optics, inverter air-condition, Webasto Air Top, complex network and electrical installation. There is also mounted three 19" rack on shock absorbers ready for clients further installation.



TAM AS

Andslimoen
N-9325 Bardufoss
Norway.

Phone (int. +47)77833414

Fax.....(int. +47)77834500

www.tam.no

e-mail tam@tam.no

TAM AS Information

MILITARY SHELTERS - Mobile Command Center (MCC)

These custom made trailer shelters are designed and produced by **TAM AS** to our client :

NORWEGIAN ARMY MATERIEL COMMAND and they was use by 6.DIV. Each unit can be connected to each other and be towed by smaller vehicles. All shelters are produced in self-supporting, insulated, long lasting sandwich material.



To day in 2008 these shelters are still in use after more than 20 years service which is a verification of high quality and low Life Cycle Cost.

TAM AS

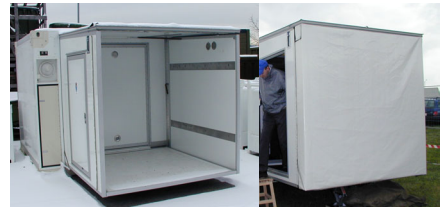
Andslimoen
N-9325 Bardufoss
Norway.

Phone (int. +47)77833414

Fax.....(int. +47)77834500

www.tam.no

e-mail tam@tam.no



**SOME OF OUR
MILITARY
MOBILE
SHELTERS
ALL DESIGN
AND
PRODUCTION
MADE BY :**



TAM AS

**Andslimoen
N-9325 Bardufoss
Norway.**

**Phone (int. +47)77833414
Fax.....(int. +47)77834500
www.tam.no
e-mail tam@tam.no**

