

Uni Abex Alloy Products Limited

2016

Version: 0.1 | Date: 31.03.2016

© Uniabex Alloy Products Ltd.

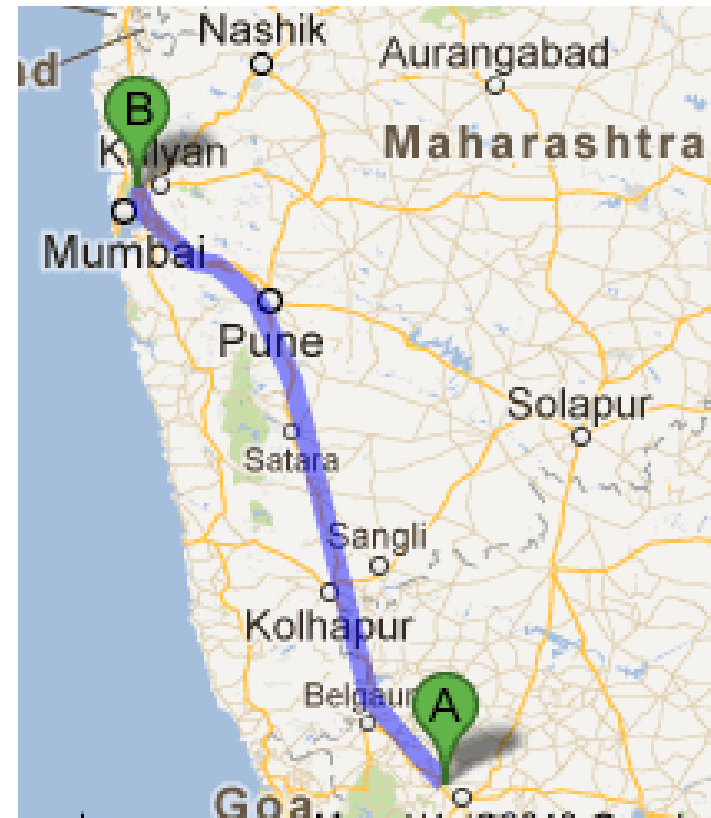


About us

Uni Abex Alloy Products Limited, is a part of the Neterwala Group which has diverse interests in Metallurgy, Software, Specialty Chemicals, Engineering, Geology, Oil & Gas and Environment.

Incorporated in 1972 Uni Abex Alloy Products Limited is a pioneer and leading manufacturer of Centrifugal and Static Castings in Heat, Wear and Corrosion Resistant Alloys with an excellent track record of supplying critical components across industry segments.

The company is listed in the Bombay Stock Exchange



A Dharwad

B Mumbai

Our Vision

To have a significant Global footprint in the metallurgical space, addressing niche markets utilizing exotic alloys and superior technologies.

Company Highlights

- Primarily a Centrifugal Casting Foundry
- Pioneer and leader in centrifugal and static casting of heat & Corrosion-resistant alloy products in India
- Highly experienced workforce
- Reputed Global Supplier
- World-class capabilities in multiple industries & technologies
- Track record of strong and long-standing client relationships

Major Geographies

- 60% of our revenue comes from Domestic Segments and 40% from Export Segments
- In the domestic market we have a pan India presence
- Our Exports are to Germany, France, Denmark, Middle East and other Asian countries.

Infrastructure



Area

- Land : 43,502 Sq meter
- Factory building : 9,540 Sq meter
- Offices & other buildings : 1,896 Sq meter
- Open land : 32,066 Sq meter



Power

- Single Feeder : 33 KV
- Connected load : 2200 KVA
- Contracted demand : 1400 KVA
- Sanctioned demand : 3500 KVA



Water

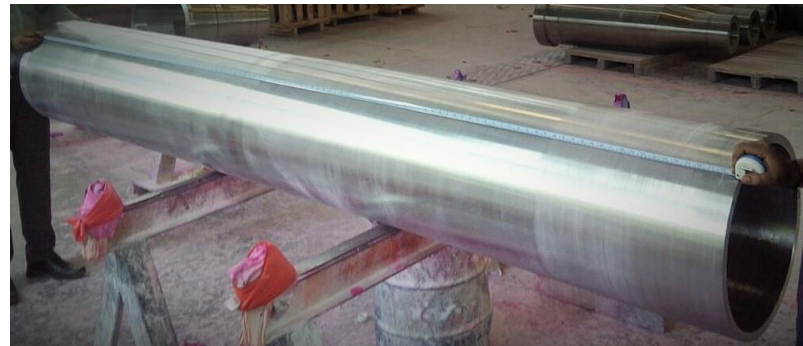
- Underground tank : 250M³
- Overhead tank : 100M³

Process Capability



Horizontal Centrifugal Castings

- 3 Horizontal Centrifugal Casting Machines with provision to add 1 more in future
- HCC Capability to cast diameter upto 1050 mm with length upto 1500 mm and diameter upto 200 mm with length upto 6000 mm.



Process Capability



Vertical Centrifugal Castings

- 1 Vertical Centrifugal casting Machine in Phase I
- Provision to add 1 more machine in future
- Capability to cast conical castings upto 1500 mm height.



Static Castings

- Static Foundry with a capacity of 1200 MT per annum of saleable castings
- Equipped with Omega plant from UK.
- Focus on critical high integrity castings
- Capability to pour single piece casting up to 3 MT



Induction Melting Facilities



- 500KW power pack connected with 3 crucibles of 300Kg, 500 Kg & 1000Kg capacity
- 750 KW power pack connected with 2 crucibles of 1500Kg capacity
- 175 KW power pack connected with 3 crucibles of 150 Kg & 300 X 2 Nos. capacity

Other Manufacturing Facilities



- Skew Roll Shot Blasting machines
- Heat Treatment Furnace
- Table type shot blasting machine



- 10 MT continuous Omega sand plant for static castings
- 3 MT continuous Omega sand plant for core making



- Vibratory Knock out machine
- Gas fired Mould Heating Oven

Material Handling & Utilities



- Compressor –500 CFM (Make Godrej- Sullair)
- EOT Cranes – 10 MT – 2 Nos. & 5 MT- 2 Nos.
- DG Set = 35 KVA
- 3 MT capacity Forklift



Testing Facilities

- Tube leakage testing machine
- Dye Penetrant Testing Facility
- PMI Testing
- Radiation Measurement Equipment
- In-house IGC testing and micro-structural phase detection facility to be added shortly

Testing Facilities

- Computerized Direct Reading Vacuum Emission Spectrometer – Spectrolab, Germany
- Stress Rupture Testing machines
- Universal tensile testing machine with high temperature facilities
- Hardness Testing Machine
- Impact Testing Machine
- Radiography Facilities

Machine Shop

- 4 Horizontal Lathe Machines
 - PBR
 - Stanko
 - Wohlenberg
 - TOS
- 1 Vertical Lathe machine
 - Morando

Business Groups: Product Offering



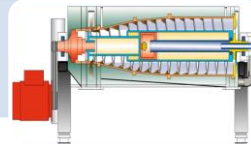
Steel

Sink Rolls
Stabilizer Rolls
Wiper Rolls
ROT rolls
Radiant Tube (U & W Types)
Water Cooled Rolls
Furnace Hearth Rollers
Firing Legs
Retorts



Iron

Air Injection Tube
Feed Tube
Central Burner Pipe
Coal Throw Pipe
Heat/Radiation Protection Pipe
Glendon coils and tubes



Decanter

Cylinder
Cone
Hub
Flange



Petroleum & Fertilizers

Reformer Catalyst Tube
Outlet Header
Hot Gas Collectors
Tube sheets and supports
Hangers
Plug headers
Bends, elbows & cast fittings



General Engineering

Retort
Tube
Miscellaneous

Business Group: Customer Segments

- Consultants & equipment manufacturers.
- Heat Treatment Furnace Manufacturers
- Plants

Steel



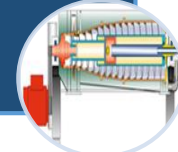
- Consultants and equipment manufacturers
- Plants

Iron



- Original Equipment Manufacturers

Decanter



- Consultants and Equipment manufacturers.
- Refineries and fertilizer plants

Petro & Fertilizer



- Intermittent component suppliers
- New Projects
- Machine builders/OEM

General Engineering



Product Portfolio : Decanter Segment



- Bowl Cylinder
- Conveyor Cylinder
- Bowl Cone
- End Hubs



Product Portfolio : Steel Segment



- Sink Rolls
- Stabilizer Rolls
- Water Cooled Rolls
- Entry Seal Rolls
- Wiper Rolls
- Radiant Tubes
- Furnace Hearth Rollers
- Retorts



Product Portfolio : Iron Segment

- Air Injection Tubes Assembly
- Feed Tubes Assembly
- Central Burner Pipes
- Coal Throw Pipes
- ROT Rolls
- Normalizing Furnace Rolls
- Hearth Rolls



Product Portfolio : Petro Segment



- Reformer Tubes Assembly
- Hot Gas Collectors
- Reformer Catalyst Tube
- Outlet Header
- Hot Gas Collectors
- Tube sheets and supports
- Hangers
- Plug headers
- Bends, elbows & cast fittings



Products / Material Specification

Heat-resistant alloy products

Typical Products

- Reformer Catalyst Tube Assemblies
- Hot Gas Collectors
- Radiant Tube Assemblies
- Normalizing Furnace Rolls
- Air Injection Tube & Feed Tube Assemblies
- Furnace Hearth Rolls
- Retorts

Material Specifications

Heat Resistant Alloys Conforming to International Standards including micro alloyed Heat Resistant Alloys

Products / Material Specification

Corrosion-resistant alloy products

Typical Products

- Bowl Cylinders
- Bowl Cones
- Conveyor Cylinders
- End Hubs
- Cages
- Machined / cast tubes

Material Specifications

- Austenitic / Ferritic / Martensitic / Duplex Stainless Steels conforming to International specifications.

**From 1st January,
2015 all
manufacturing
operations have
shifted to our new
factory at
Dharwad**



Genesis



- Thane first made news as an industrial zone way back in the early sixties, with the setting up of several small, medium-sized and Large industrial units
- From late nineties industries started moving out of Thane
- Urbanization in the neighborhood and regulatory constraints were impediments for expansion
- On this background Dharwad Project was conceived

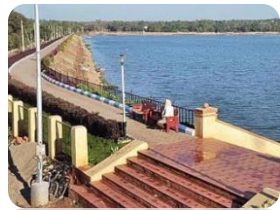


About Dharwad



- Dharwad is the second largest city of Karnataka state on the NH4 at 750 meters above sea level.
- History dates back to the Hoysala period which was between 10th and 14th century. The word "Dharwad" means a place of rest in a long travel or a small habitation, the name is derived from the Sanskrit word 'dwarawata', 'dwara' meaning "door" and 'wata' or 'wada' meaning "town".
- The British started an English medium school in Dharwad in 1848. Later, in 1863, the Basel Mission organization started another school. Since then Dharwad has been a renowned centre of learning, with many famous high schools, colleges and universities.
- The British government also established a railway station in 1888.
- The city of Dharwad has contributed some of the greatest personalities of Hindustani classical music including Sawai Gandharva, Mallikarjun Mansur, Bhimsen Joshi, Basavaraj Rajaguru, Kumar Gandharva and Gangubai Hangal

Why Dharwad



- Generally a peaceful Industrial location on the National Highway having excellent accessibility.
- Adequate availability of Land parcel with well developed infrastructure.
- Hubli-Dharwad is the most developing industrial hub in Karnataka after Bangalore, with more than 1000 small and medium industries.
- Dharwad is an educational center with many engineering colleges hence ample availability of technical manpower
- Moderate & Dry climate throughout the year which is good for foundry industry

Our New Plant

We have set up a Greenfield foundry at Dharwad in Southern India.

The new facility is about 555 km south of Mumbai.

Equipped with contemporary technology has started commercial production of high integrity static and centrifugal castings from Jan 2014.



Oct. 2011

Ground Breaking ceremony was conducted on 13th October at the hands of Mr. Fondekar, then Executive Director - Uni Abex.

Oct. 2013

33KVA dedicated power supply line was charged on 30th October.

Oct. 2013

First Trial run was conducted on 31st October.

Dec. 2013

Commissioning and integration of all the machineries.

Jan. 2014

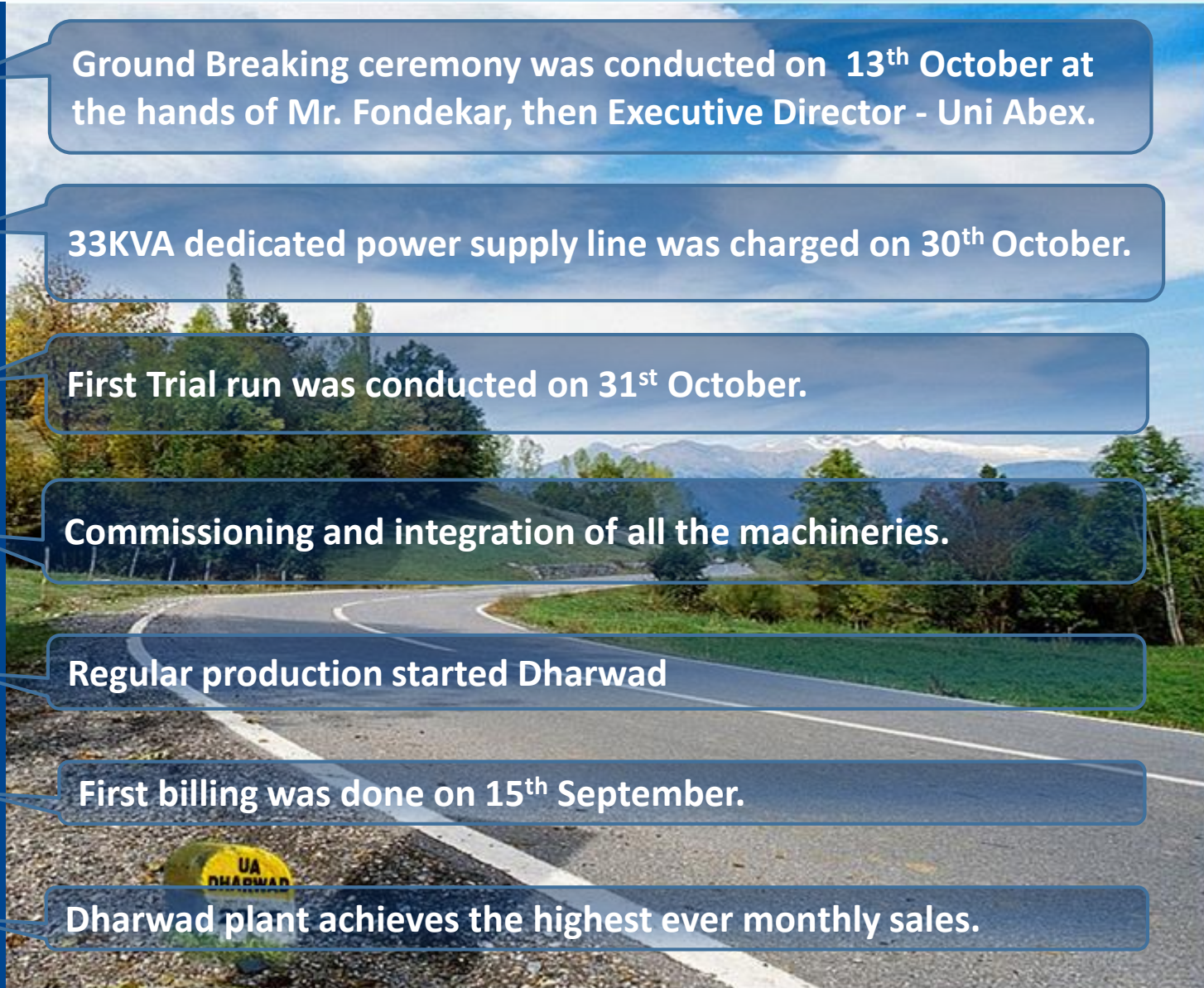
Regular production started Dharwad

Sept. 2014

First billing was done on 15th September.

Mar. 2016

Dharwad plant achieves the highest ever monthly sales.



Glimpses of the Manufacturing facility

Our film “Uni Abex – Creating Enduing Value” which show case our new manufacturing facility @ Dharwad is now on YouTube, you may choose to click on the link below to view it

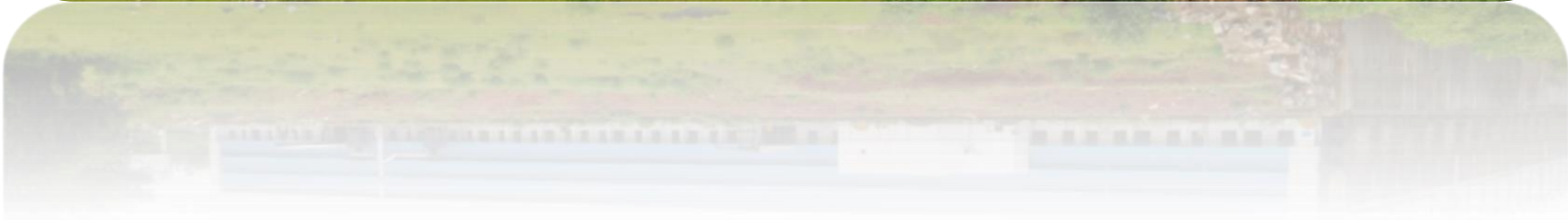
<https://www.youtube.com/watch?v=HQj74dxE7bq>

The Architect's Impression of Dharwad Plant



Enduring value.....

and the reality ...



Training & Development



**Fire
Prevention
and Control**



Root Cause & defects



**Induction
Furnace
Operation**



**Team
Work**



**Mock
Drill**



**ISO Awareness
Training**

Enduring value.....

Some moments...



We thank you for your time and look forward to a mutually rewarding association with you.....



Kishore K Tamhaney
Chief Executive Officer
kkt@uniabex.com



Amit (A Mukherjee)
General Manager - Sales & Marketing
am@uniabex.com