

AXIS SOLUTIONS

... Committed to Our Customers' Success



© KGL Holding K.S.C. (Closed)

AXIS SOLUTIONS

AXIS Business Units

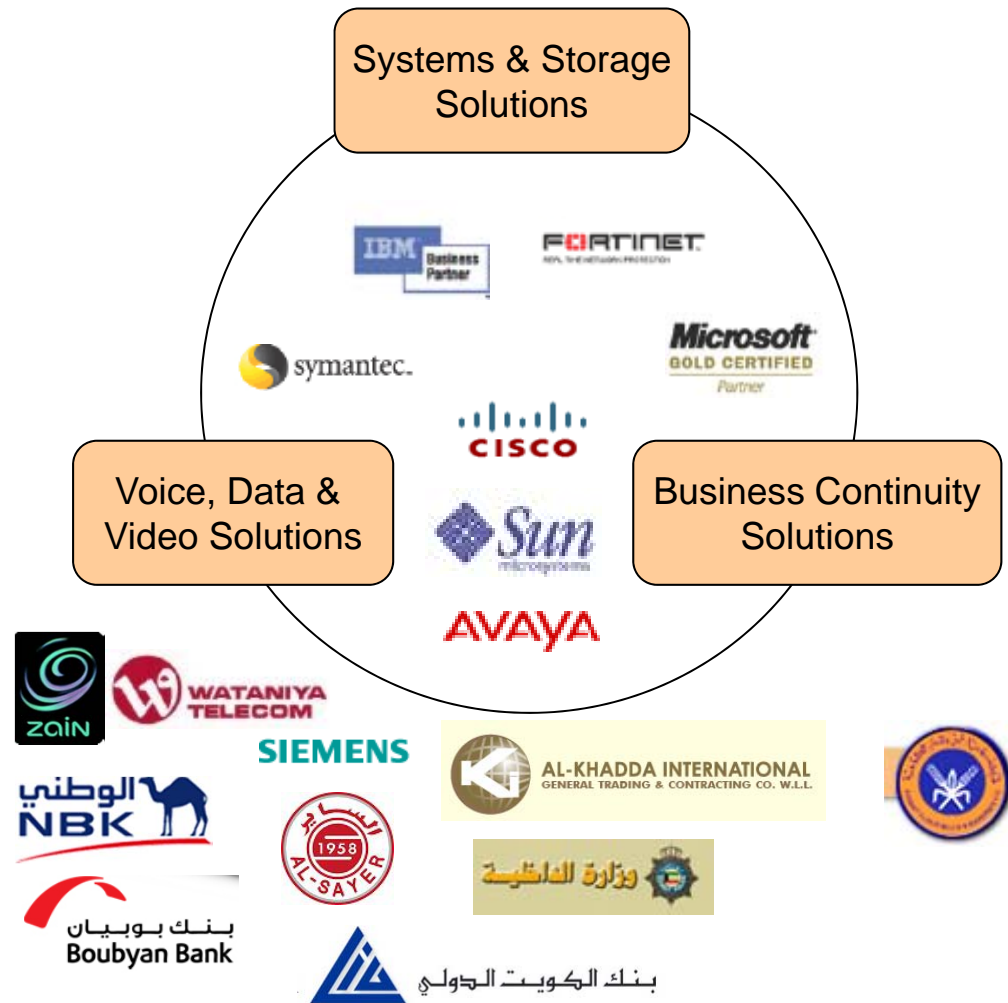
- 1 Enterprise Infrastructure Solutions (EIS)
- 2 Enterprise Network Solutions (ENS)
- 3 Enterprise Software Solutions (ESS)
- 4 Financial & Payment Solutions (FPS)
- 5 Advanced Dist. & PT Solution (ADPT)
- 6 Managed Services Solutions (MSS)

AXIS Business Units



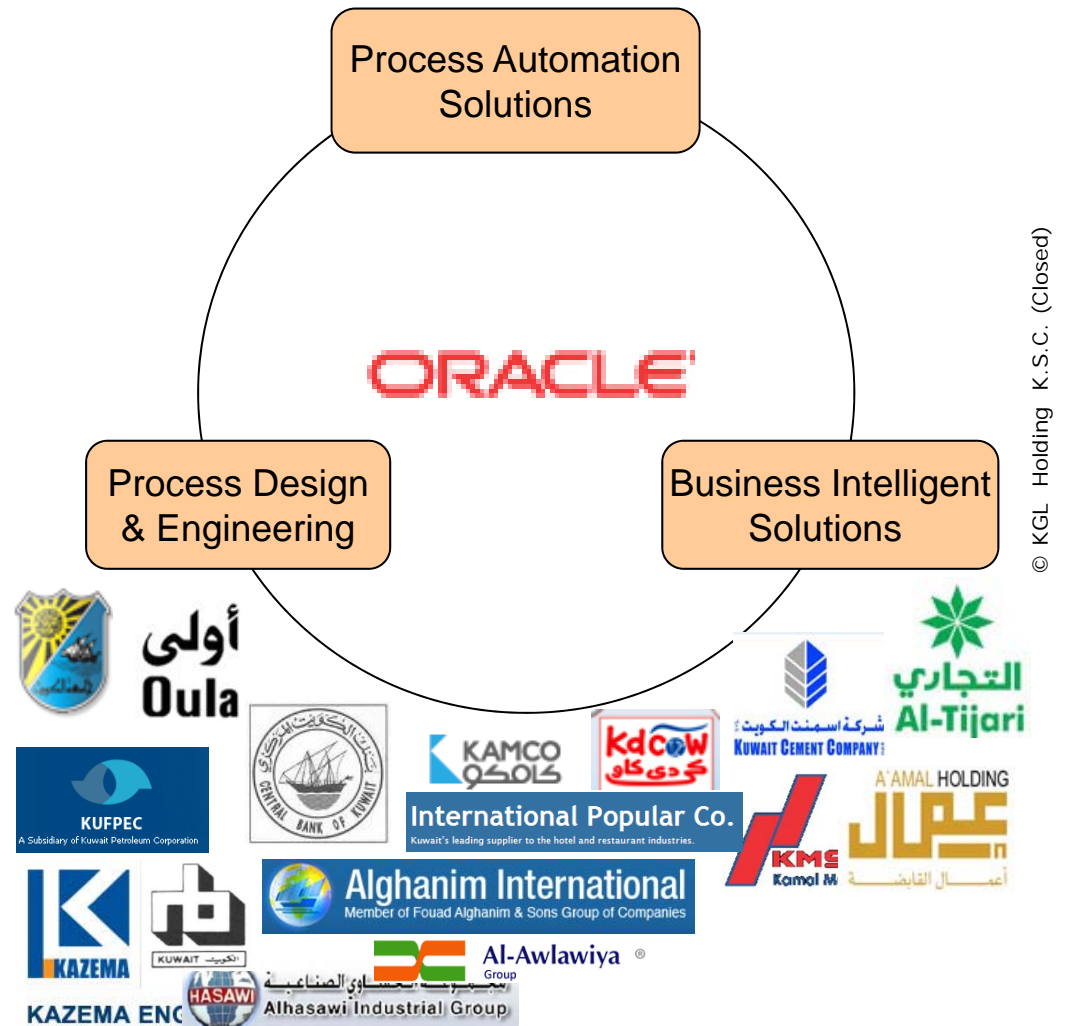
© KGL Holding K.S.C. (Closed)

AXIS Business Units



© KGL Holding K.S.C. (Closed)

AXIS Business Units



AXIS Business Units

1

Enterprise Infrastructure Solutions (EIS)

2

Enterprise Network Solutions (ENS)

3

Enterprise Software Solutions (ESS)

4

Financial & Payment Solutions (FPS)

5

Advanced Dist. & PT Solution (ADPT)

6

Managed Services Solutions (MSS)



© KGL Holding K.S.C. (Closed)

AXIS Business Units

1

Enterprise Infrastructure Solutions (EIS)

2

Enterprise Network Solutions (ENS)

3

Enterprise Software Solutions (ESS)

4

Financial & Payment Solutions (FPS)

5

Advanced Dist. & PT Solution (ADPT)

6

Managed Services Solutions (MSS)

Vertical Locations
Based Solutions

mizar



PARKEON

Fleet Management Solutions
Global Coverage, All Satellite, All the Time!

AVLS
Solutions

CES
WIRELESS TECHNOLOGIES

IVU
TRAFFIC TECHNOLOGIES
AG

Astrata



WATANIYA
TELECOM

net
الاتصالات الوطنية

knetco

وزارة الشؤون الاجتماعية والعمل
MINISTRY OF SOCIAL AFFAIRS AND LABOUR

شركة النفط الكويتية
Kuwait Oil Company KOC

SPETCO



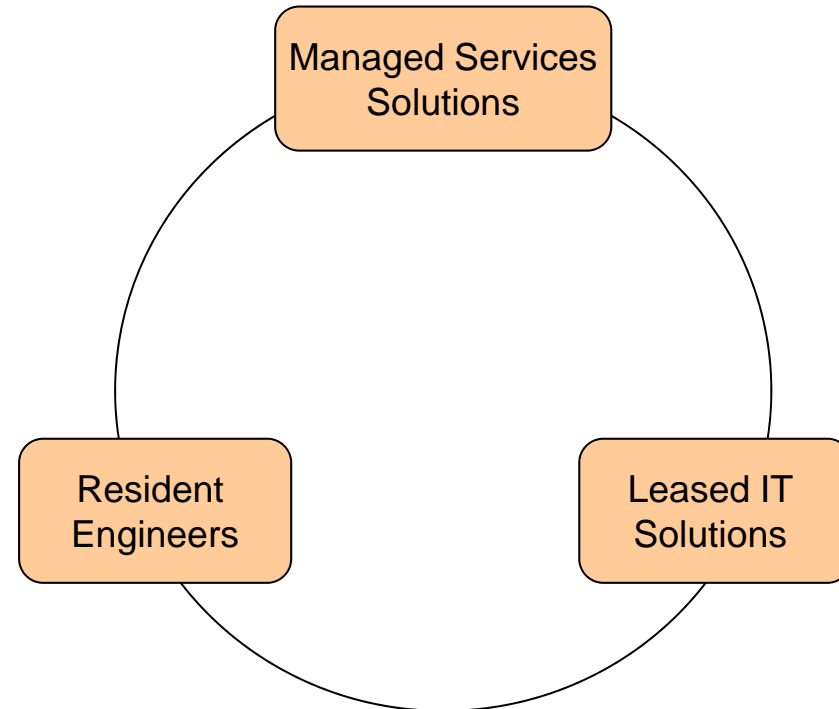
الشركة الوطنية للتنظيف
NATIONAL CLEANING CO.

Group 4
Group 4 Al-Zahm W.L.L.
شركة جروب فور الزاهم للخدمات والأمن والسلامة م.م.

© KGL Holding K.S.C. (Closed)

AXIS SOLUTIONS

AXIS Business Units



KGL
INVESTMENT CO
الاستثمار في الاستثمار
INNOVATION IN INVESTMENT

KGL
HOLDING
شركة رابطة الكويت والخليج القابضة لم.ك.م.
Kuwait and Gulf Link Holding Company, k.s.c.

© KGL Holding K.S.C. (Closed)

Reference Customers

KNET (Kuwait)

- **Supply, install & maintain 240 ATM Machines:**
 - Drive Through
 - Lobby
 - Walk-Up
- First Line Maintenance (FLM) and Cash Replenishment
- Second Line Maintenance with SLA
- Designed & Implemented ATM Canopies
- Designed & Implemented CCTV Solutions for ATM's (transactions based) for all Diebold ATM machines



© KGL Holding K.S.C. (Closed)

Reference Customers

Kuwait International Bank (KIB)



- **Supply, Install & Maintain 36 ATM's for KIB**
Branches
- Cash Deposit & Cash Dispense ATM's
- ATM Monitoring System



© KGL Holding K.S.C. (Closed)

Reference Customers

Banking Sector

For more than 5 Years now, AXIS is responsible
For supplying Kuwaiti Market with
**Personal & Corporate Cheques for
ALL BANKS**



© KGL Holding K.S.C. (Closed)

Kuwait International Bank (KIB)



- Contract for the Supply, Installation, Configuration, Testing and Commissioning of Information Technology Infrastructure for Kuwait International Bank Disaster Recovery Site
- DR Solution included Sun, Cisco, Nortel, IBM, Sybase, Oracle, Novel and others.
- Active / Active Configuration with Zero Recovery Time Objective (RTO) & Zero Recovery Point Objective (RPO).



Reference Customers

KGL Holding (Kuwait)

- Oracle E-Business Suite ERP Implementation for 23 Companies
- Implementation on Sun Microsystems Cluster
- Consolidated with KGL Holding (Finance & HR)
- Centralized implementation accessible from 11 countries
- Production Site in Kuwait – KGL Data Center
- Standby DR Site in UAE to maintain Group Business Continuity
- More than 200 Sites Connected to Production & DR Sites over IPLC/VPN Links

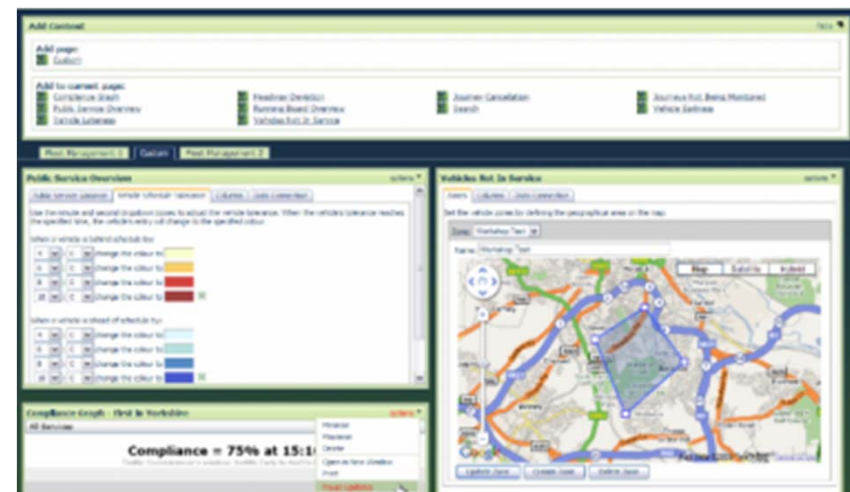


Reference Customers

Sharjah Passenger Transport Company (SPTC) – UAE/ Sharjah

- Automated Vehicle Tracking System
- Automated Fare Collection System
- Passenger Information System
- Scheduling and Planning System
- Enterprise Resource Planning System
- Complete Voice & Data Solutions
- Structured Cabling System
- Connectivity Solutions (Internet, Data & ISDN over FOC)

مواصلات الشارقة
SHARJAH TRANSPORT



© KGL Holding K.S.C. (Closed)

Reference Customers

National Bank of Kuwait (NBK)



- Sun Microsystems Infrastructure for IBM Tivoli Netcool

ZAIN Group



- Sun infrastructure for Revenue Assurance & Fraud Management

Siemens



- Maintenance for existing Sun Platform

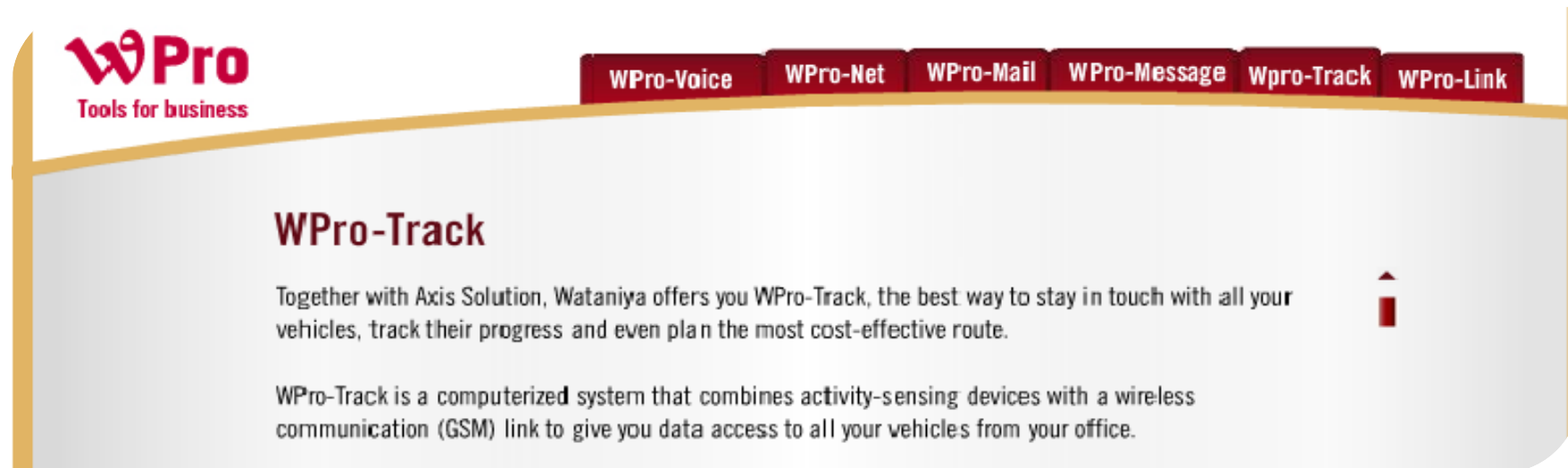
Reference Customers

Wataniya Telecom



- AVLS Services

<http://www.wataniya.com/B2BPortal/Business.portal? LANG =en>

A screenshot of the WPro-Track service page. The page has a header with the 'WPro Tools for business' logo on the left and a navigation bar with buttons for 'WPro-Voice', 'WPro-Net', 'WPro-Mail', 'WPro-Message', 'WPro-Track', and 'WPro-Link'. The main content area is titled 'WPro-Track' and contains two paragraphs of text. The first paragraph states: 'Together with Axis Solution, Wataniya offers you WPro-Track, the best way to stay in touch with all your vehicles, track their progress and even plan the most cost-effective route.' The second paragraph states: 'WPro-Track is a computerized system that combines activity-sensing devices with a wireless communication (GSM) link to give you data access to all your vehicles from your office.' There is a small upward-pointing arrow icon on the right side of the text area.

WPro
Tools for business

WPro-Voice WPro-Net WPro-Mail WPro-Message WPro-Track WPro-Link

WPro-Track

Together with Axis Solution, Wataniya offers you WPro-Track, the best way to stay in touch with all your vehicles, track their progress and even plan the most cost-effective route.

WPro-Track is a computerized system that combines activity-sensing devices with a wireless communication (GSM) link to give you data access to all your vehicles from your office.

© KGL Holding K.S.C. (Closed)

Reference Customers

Shuaiba Container Terminal (SACT) – Kuwait

- Complete Voice & Data Infrastructure
- Connectivity Solutions
- Structured Cabling System
- Outdoor Wireless Coverage
- Hand Held & Vehicle Mounted Terminals
- Security Solutions
- Container Terminal Operating System (NAVIS)
- ERP Implementation (Oracle)
- Managed Services



Highlights

- Implementation during operations
- 73% reduction in truck turn time inside the terminal
- 56% increase in quay crane productivity
- Throughput of 150 KTEUs per annum
- The port has 440-meter berth, 3 STS Cranes, and 7 SCs

Reference Customers

Mina Saqr RAK – UAE

- Complete Voice & Data Infrastructure
- Connectivity Solutions
- Structured Cabling System
- Outdoor Wireless Coverage
- Hand Held & Vehicle Mounted Terminals
- Security Solutions
- Container Terminal Operating System (NAVIS)
- Managed Services



Highlights

- Greenfield Implementation
- Expected to cross a throughput of 300 KTEUs per annum
- The port has 700-meter berth, 3 STS Cranes, and 6 RTGs

Reference Customers

Mundra Port Gujarat – India

- Container Terminal Operating System (NAVIS)
- Integration between Navis TOS and SAP



Highlights

- Greenfield Implementation
- Intermodal operations
- Expected to cross 750 KTEUs per annum
- The port has 631-meter berth, 2 rail tracks, 3 Super-Post-Panamax Cranes with Twin Lift, 12 RTGs, and 2 RMGs

धन्यवाद

Hindi

谢谢

Simplified Chinese

תודה רבה

Hebrew

Спасибо

Russian

Gracias

Spanish

شكراً

Arabic

Thank You

English

Obrigado

Brazilian Portuguese

Grazie

Italian

감사합니다

Korean

Danke

German

Merci

French

நன்றி

Tamil

謝謝

Traditional Chinese

ขอบพระคุณ

Thai