

CORENA IPC Module

PRODUCT HIGHLIGHT

Create illustrated parts catalogs in a single-source environment

- Easily manage your technical information in a single source environment
- Comply with the ATA iSpec 2100/2200 and S1000D standards
- Unlimited distribution possibilities
- Seamless integration

Manage all your technical parts information in a single-source environment – and produce perfect illustrated parts catalogs and initial provisioning information in compliance with the ATA iSpec 2100/2200 and S1000D standards. CORENA IPC Module (Intelligent Parts Control) helps you to create, manage, track and control your technical information.

A FLEXIBLE SYSTEM FOR ANY INDUSTRY

CORENA IPC Module is designed to meet the requirements of any business that handles complex parts catalogues. From aircraft manufacturers to defense equipment manufacturers, its multi-functional design makes it easy to adapt and intuitive to use.

HANDLE INFORMATION IN ANY FORMAT

CORENA IPC Module is a database application with a user-friendly interface for managing all technical information, including vendor and parts information. The information is stored in a relational database that outputs it to a structured SGML/XML environment, giving you the ability to handle information in any format, including customer-specific variations.

CORENA develops document management and system integration software for the defense, aerospace, automotive, energy, and maritime industries.

CORENA's Commercial-Off-The-Shelf products are highly configurable and allows for the solution to be aligned with your business processes. We offer solutions that handles the entire lifecycle including data input, management, publishing and delivery.

Visit us at www.corena.com

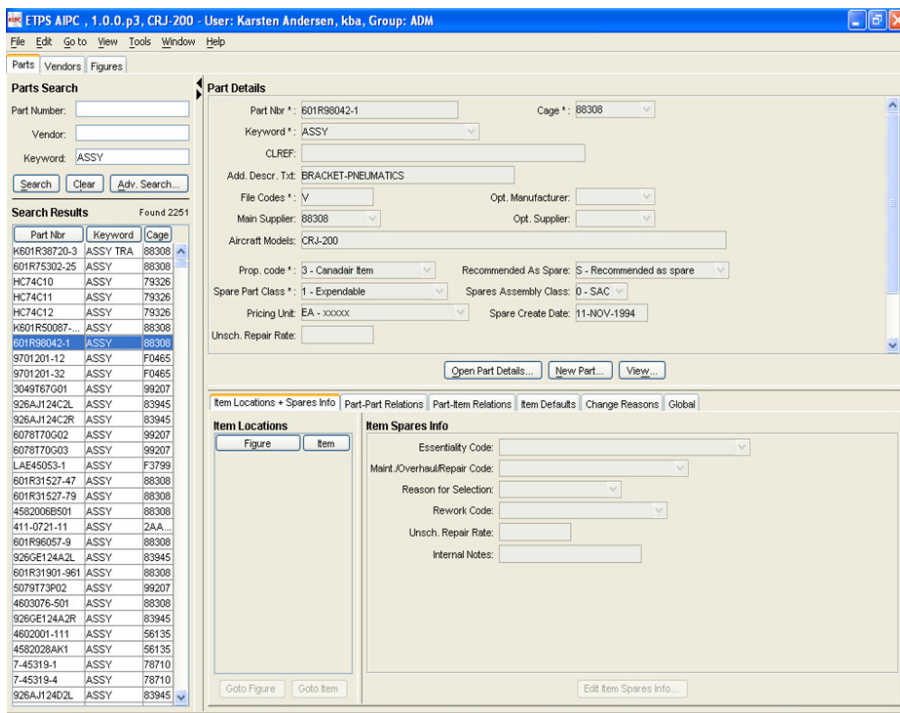


Figure 1 - Parts editor client

KEY CABABILITIES

■ Vendor authoring

Create new Vendors and edit exiting Vendors details. A unique Cage number is assigned to each Vendor so that a part always refers to the correct Vendor.

■ Parts authoring

Create and edit Parts with extensive details such as Item Locations, Part-Part Relations, Part-Item Relations, Change Reasons, Vendor Details, Prices etc.

■ Figure authoring

Create, modify and copy Figures. It is possible to copy one or more Figures into a new Figure or into a local variant of the Figure.

■ Effectivity

Effectivity is assigned to Items (a Part with a location) and Figures. This allows the user to resolve for information valid for one particular tail or for a set of tail numbers.

■ Revision control

Information stored in the CORENA IPC Module database is exported in an XML format which in combination with the Life*WEB repository, provides revision control and unlimited distribution possibilities on Life*WEB and CD-ROM.

■ Notification

CORENA IPC Module integrates all the data in one repository from which it is possible to log on as a user of one specific aircraft program. If the user makes a change which will affect other aircraft programs, he will be notified before the change is performed.

CORENA USA Inc.
40 Lake Bellevue Drive
Suite 230
Bellevue, WA 98005
USA
Tel: +1 425 643 7443

CORENA Canada Ltd.
247 North Service Rd. West
Oakville
Ontario L6M 3E6
Canada
Tel: +1 905 844 9595

CORENA Danmark A/S
Bregnerødvej 139
DK-3460 Birkerød
Denmark
Tel: + 45 4594 9400

CORENA Norge AS
Industritunet
Dyrmyrgt.35
N-3611 Kongsberg
Norway
Tel: + 47 3271 7200

CORENA Sverige AB
Åbyvägen 3
702 27 Örebro
Sverige
Tel: + 46 70253 7340

CORENA Deutschland GmbH
Hahnstrasse 70
D-60538 Frankfurt Am Main
Germany
Tel:+49 696 69 00 80

CORENA Holding A/S
Beijing Representative Office
Room 5128, 1 Sanlihe Road
Haidian District
Beijing 100044
China
Tel: +86 10 6831 3388 (5128)