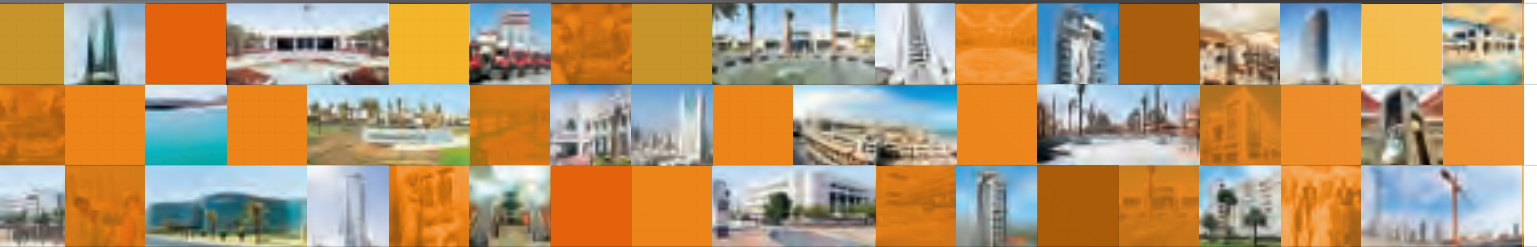


# KCPG



On time, within budget, to your satisfaction

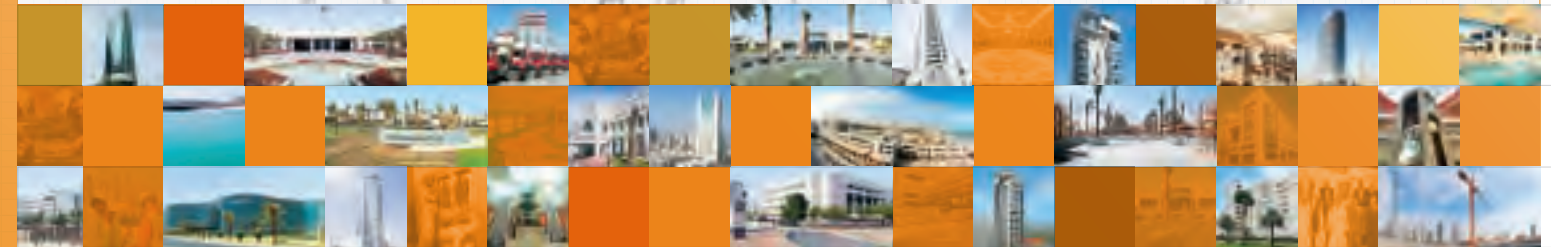


Corporate  
Brochure

brochure

## Contents

- 2 About KCPC**
- 4 Our Team
- 6 Our Quality
- 8 Our Clients
- 10 Our Safety
- 12 Our Future
- 14 Our Mission
- 16 Chairman's Message
  
- 18 Contracting**
- 20 Civil Engineering
- 24 Interiors
- 26 Electrical Engineering
- 28 Infrastructure
- 30 Special Projects
  
- 32 Commercial**
- 34 Building Transport Systems
- 36 Water Facilities
- 38 Engineering Products
  
- 40 Branches and Subsidiaries**





About KCPC

## Extensive experience

Established in 1979, the Kuwait Company for Process Plant Construction and Contracting (KCPC) has since grown into a leading construction company in Kuwait. Our success has enabled us to expand our operations into the United Arab Emirates, Oman, Qatar and Lebanon.

With an extensive experience, advanced technical resources and a reputation for quality, our competitive products and services are unrivalled in the market. We deliver top quality projects on time, within budget and to client satisfaction.

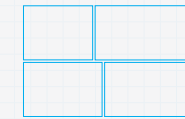




# Committed to excellence

Nurtured by a challenging, rewarding, and secure working environment, our employees are committed to the company's vision of pursuing excellence in the field of contracting and construction.

Our multi-national management team consists of highly skilled professionals, all specialized in their respective fields. They possess the drive, passion, dedication and loyalty necessary to make each project a guaranteed success.



- A Electrical, mechanical maintenance team
- B Our team of highly skilled professionals
- C Site engineers and field employees at Prime tower, a 36 floors tower in Business Bay (Dubai)
- D Electrical installation



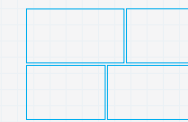


# Continual quality improvement

— We are classified as a 'Grade One' construction company - the highest classification in Kuwait.

Our ISO 9001:2000 compliant quality management system monitors product and service quality to: meet regulatory requirements, address client satisfaction, and regulate continual quality improvement.

State of the art construction equipment operated and maintained by our highly trained professional mechanics, provide an operational advantage and contribute to delivering high quality projects.



- A Chalet service center (Kuwait)
- B KNPC building (Kuwait)
- C Public Authority for Civil Information, a 29,000 square meters administrative space with special interior finishes (Kuwait)
- D Interior fit outs at Amiri Diwan (Kuwait)





# Client satisfaction

Our policy is to create successful partnerships with clients by delivering competitive, high quality construction work to exceed our client's expectations.

Communication with our clients is an essential element to client satisfaction and client loyalty. We attend to all client feedback immediately and efficiently.



Bush complex (Kuwait)



A Distinctive design and built of Bayan Palace Golden Diwaniya (Kuwait)

B KNPC's new head office building in Ahmadi office space: 42,000 square meters and on - site parking for 600 cars. Project achieved many firsts in Kuwait and has won international award for its unique design (Kuwait)





# Commitment to community

Our excellent safety track record is the result of our commitment to the health and safety of our employees, clients and the community.

Safety is integrated in the initial planning stages of all our projects. We also actively communicate health and safety awareness among our employees and clients throughout the stages of every project.



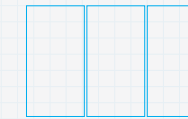
- A Messilah Beach Hotel, a new 479 room five star hotel in a seafront location. Includes marine works, new access road, sewage connections, and state of the art, IT facilities
- B Walking trail and private beach at Messilah Beach Hotel
- C Electrical control room





# Regional expansion

Being well established in the UAE, Qatar, Oman and Lebanon, we aim to expand even further as a superior contracting company and construction service provider. We have developed strong and long - term relationships with over 20 strategic partners from around the world. This gives us the support to expand our business assertively in the Middle East and North Africa.



- A Saifi Crown, a multistory tower (Lebanon)
- B Dakota, a state of the art multilevel tower (Lebanon)
- C Polygon Tower, a 19 floor commercial tower in Business Bay (Dubai),

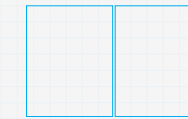




## Continual quality improvement

- The mission of KCPC is to:
- Deliver value - added services to all our customers
  - Create a successful partnership with our customers throughout the work process
  - Deliver projects on time and within cost
  - Achieve uncompromising quality and safety standards
  - Create a management culture that motivates, nurtures and excites all our employees through continued training, education and self - improvement in pursuit of excellence

Through internal and external partnering we will provide a maximum value to customers, a challenging, rewarding, safe environment to our employees, and a superior return on investment with sustainable growth for our shareholders.



A Hospital car parks in several locations (Kuwait)

B Public Authority for Minor Affairs, a multistory tower with modern facilities (Kuwait)







Moayed H. M. Al-Saleh (Chairman and MD)



Marwan Salamah (Vice Chairman)

Since its formation in 1979, KCPC has achieved an impressive 30 year legacy of successfully meeting its customers' requirements and exceeding their expectations. KCPC is proud of its reputation as a Grade One construction, contracting and commercial company in Kuwait and the Middle East.

KCPC's corporate culture is one of dedication and application of its expertise to continually meet its customers' expectations and investment in, respect for and continuous improvement of KCPC's management and employees.

In a time marked by rapidly changing technology and the current economic slow down, I am enthusiastic about the opportunities available to KCPC in addressing the challenging requirements of our existing and prospective customers.

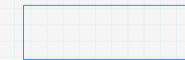
KCPC's success is measured through its customer satisfaction with the delivery of projects and services to the highest quality, in time and on budget.

To meet the challenges of the current market conditions and to further improve our services to customers, KCPC continues to invest in its management and employees, internal business processes and systems, and equipment. KCPC is strengthening its core competencies as well as investing in the development of its capabilities to meet new challenges.

The greatest asset of KCPC is its loyal, dedicated and hard working employees. KCPC therefore strives to continue to be recognized as an employer of choice and has established programmes designed to retain and attract highly skilled and motivated professional managers and workforce.

I look forward to taking KCPC into its next decade of success.

**Moayed H. M. Al-Saleh**  
Chairman and Managing Director KCPC



A Left to right: Mohammed Hakim (Electrical Dept Manager), Anan Al-Kishawi (Infrastructure Dept Manger), Moayed H. M. Al-Saleh (Chairman and MD), Jaffar Karimi (Civil Dept Manager), Paul Jewkes (Commercial Manager - Corporate)





Contracting

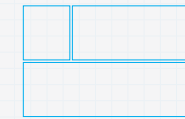
## Large - scale projects

Through our Contracting arm, we at KCPC provide civil, electrical and infrastructure products and services. We have the skill and capability to manage and execute contracting projects of any scale or magnitude, as well as provide comprehensive after sales maintenance services.





Our complete building and civil engineering service incorporates: project and construction management, design, engineering, construction, and commissioning. We undertake residential, commercial and industrial buildings, as well as shopping centers and hotel projects.

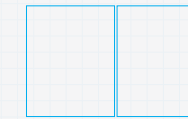


- A Malaysian Embassy and, the Ambassador's Residence (Kuwait)
- B Al-Corniche Club, a modern health club with large size swimming pools (Kuwait)
- C Sky view of Messilah Beach Hotel (Kuwait)

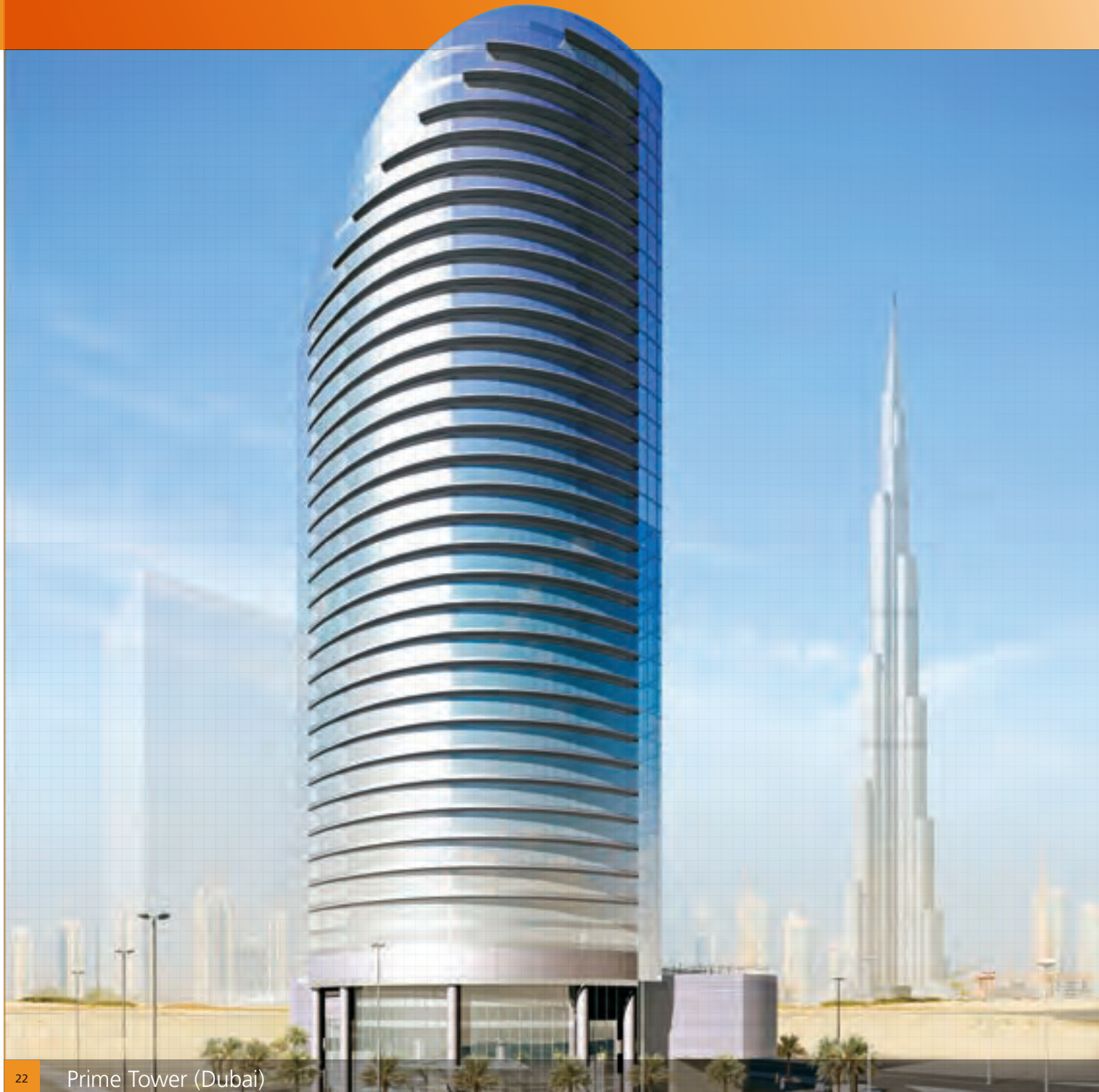




Our strong associations with globally reputed design, engineering and construction companies enhance our value and strength.



- A Al Masalah tower complex, a building of 8 residential towers overlooking the Gulf Road
- B Al Masalah residential towers, combines two 40 floors (Kuwait)





KCPC Interiors take full responsibility for the conceptualization, design, procurement, engineering, management and installation of simple to sophisticated high - end interior fit - out projects.

KCPC Interiors has a proven track record in Kuwait and the GCC in completing fit outs to palaces, hotels, wedding halls and other such prestigious projects.



- A Main entrance external works conference hall
- B Main corridor to dinning and Golden Diwaniya
- C Prime Minister's lobby
- D Conference palace hall main lobby





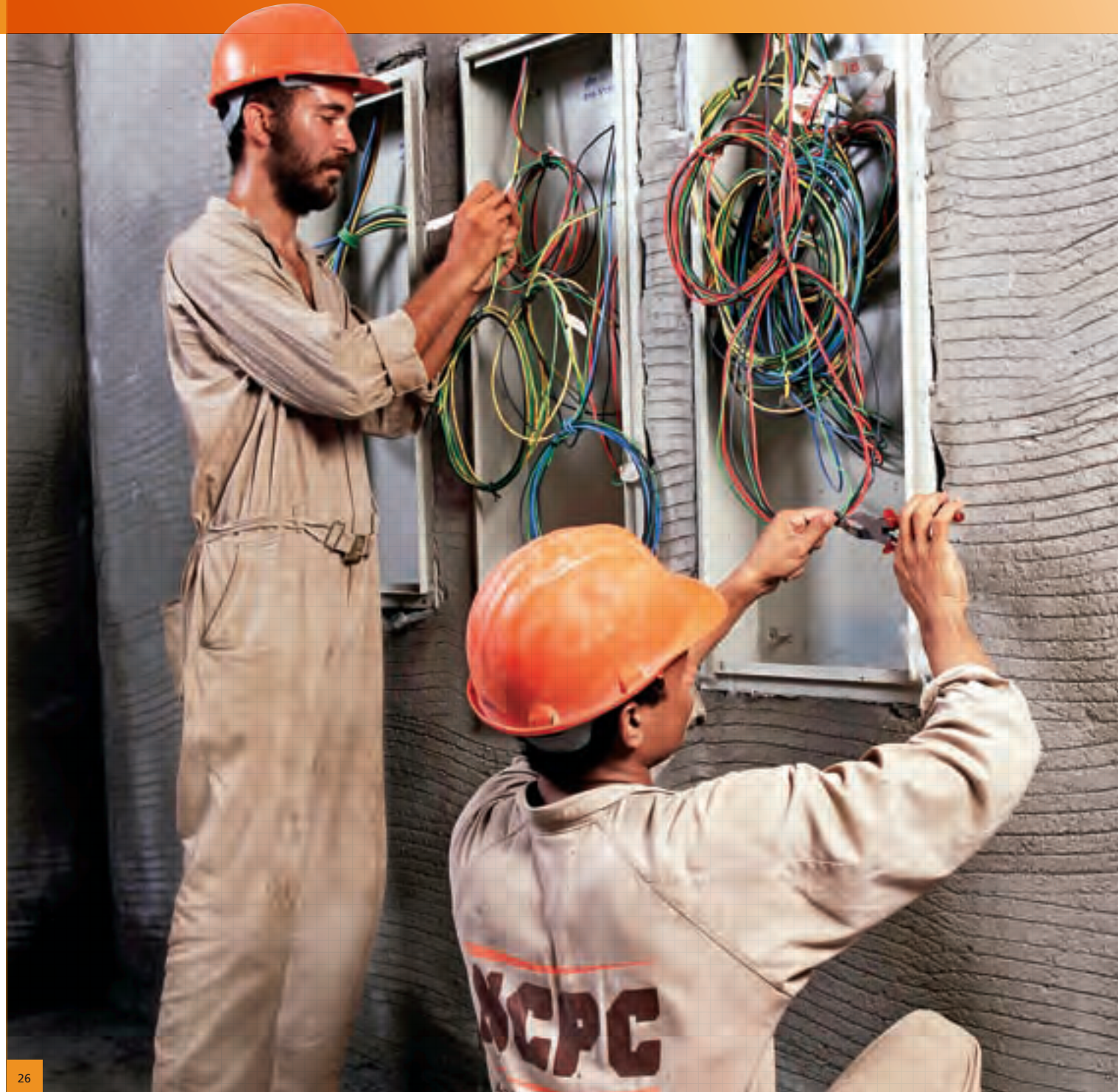
We are the highest graded electrical contractor in Kuwait. With the support of our professional team of engineers, we provide our customers with a wide range of electrical - related products and supporting services. Our services are complete, ranging from supply and installation to project management and maintenance.

The electrical engineering systems we offer include:

- Substation, switchgear and bus ducts
- Power cabling works of up to 11Kv and communication cabling of copper and fiber system networks
- Power, lighting and lighting control system, room control system
- Telephone, data, fire alarm, CCTV, MATV, public address (PA), intruder detection system (IDS)
- Street lighting and emergency power supply (diesel generators)



- A Switch gear termination at the electrical control room Messilah Beach Hotel (Kuwait)
- B Lighting fixtures assembly and installation at KNPC
- C Electrical cable and fiber optic installation at Al-Corniche Club

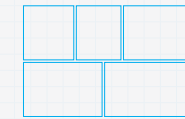




# Cost effective solutions

Supported by our asphalt - batching plants and specialized equipment, we are capable of undertaking all major road and highway construction projects. In addition, we provide complete related services: storm water drainage, sewer systems, water networks, telephone networks, and road marking and signs.

We also maintain drainage pipelines. With the aid of our advanced CCTV inspection technology we are able to detect pipeline conditions quickly and efficiently, thus eliminating the need for time - consuming surface exploratory excavations. Operated by our experienced technicians, robotic CCTV inspection cameras enable us to determine a pipeline's exact repair needs and plan precise maintenance works. This advanced inspection method provides our clients with a cost effective solution to pipeline maintenance works resulting in total client satisfaction.



- A Road construction and maintenance in various locations (Kuwait)
- B Utility manholes and drainage for pipeline network
- C Storm water manhole framing and installation
- D Storm water pipeline installation
- E Highway construction and maintenance





# Diverse services and products

At KCPC, we provide diverse services and products for various specialized industries.

## Oil and gas

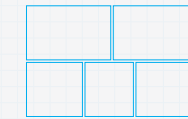
Services for oil and gas facilities: supply and installation of fireproofing, cladding, mechanical insulation, aluminum, jacketing, sand blasting, and coatings.

## Construction

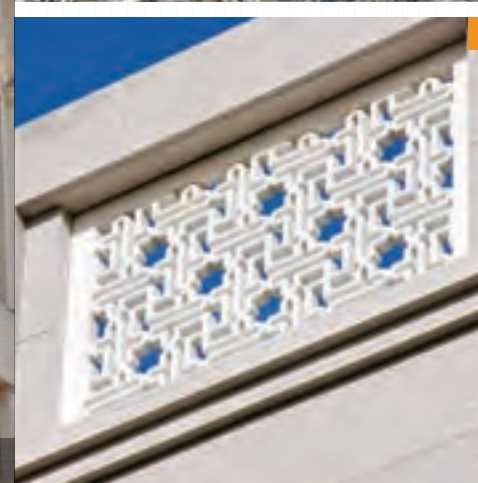
Material supplies including: steel, wood, cement, adhesives, and paint.

## Transportation


Construction of airfield runways.



- A Fire proofing and protective paint for oil and gas sector (Kuwait)
- B Bridges strengthening and superstructure desalination
- C External ornamental elevations treatment
- D External insulated facades to improve architectural look
- E Concrete repair and airfield runways treatment





A photograph of a modern building's interior featuring a large, multi-level staircase with glass railings and a person walking on an upper level. The scene is brightly lit, showcasing the architectural details of the space.

Commercial

## Direct services

KCPC's established success as a contracting company enabled us to branch seamlessly into the commercial business. Our commercial branch allows us to offer our services directly to our customers, from individuals to large multinational organizations. We provide, install and maintain: elevators, water facilities, and engineering products.



# Round the clock maintenance

— We supply and install the world - renowned Schindler passenger and freight elevators, escalators and moving walks.

We also provide consultation service during the design stages. In addition, our support team of over 100 qualified engineers and technicians provide round the clock maintenance services.

Our product range includes: passenger and freight elevators, escalators, moving walks, dumbwaiters, and elevators for the physically challenged.



- A Elevator installation, 360 Mall (Kuwait)
- B Elevator installation, Holiday Inn (Kuwait)
- C Elevator installation, Burgan Bank (Kuwait)
- D Laila Gallery, installed 6 elevators + 4 escalators
- E Avenues, installed 24 escalators + 2 conveyor + passenger + 13 freight elevators
- F Arraya Center, installed 26 elevators + 8 escalators





— We construct, install and maintain major, water facilities. Additional services are design and finishes, water proofing as well as after sales maintenance.

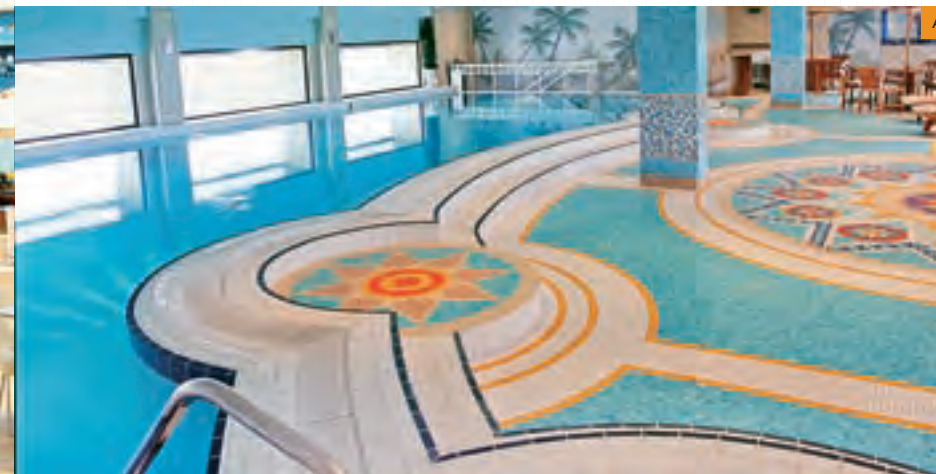
Our water facility products include: treatment plants for drinking water for homes and large buildings, swimming pools, water features, and spa facilities.



A Al-Corniche Club indoor swimming pool consists of large size swimming pools with musical and light effects (Kuwait)

B Al-Corniche Club outdoor swimming pool

C Special design fountain at Bayan Palace (Kuwait)





# Quality mark certificate

Our engineering products have gained the esteemed Quality Mark Certificate from Kuwait's Ministry of Commerce and Industry.

Produced at our own plants, our products include: asphalt, polymer based bitumen, and ready mix concrete. We also provide scaffolding services and equipment rental.



- A State of the art fully computerized asphalt plant (Kuwait)
- B Asphalt paving team and equipment
- C KCPC Laboratory
- D Concrete plant and mixing trucks
- E Concrete work and equipments (Kuwait)





## BRANCHES

### KCPC (Dubai)

P.O.Box 282965 ,Dubai ,UAE  
Tel : +971 4 3474569  
Fax: +971 4 3474579  
kcpcdubai@kcpc.com.kw  
www.kcpc.com.kw

### KCPC (Abu-Dhabi)

Al Jazira Sports Club Building, Abu Dhabi, UAE  
Tel : +971 2 4950513  
Fax: +971 2 4454672  
kcpcdubai@kcpc.com.kw  
www.kcpc.com.kw

### KCPC (Qatar)

P.O.Box 19951, Doha Qatar  
Tel : +974 4786373/4  
Fax: +974 47844324  
kcpc@kcpc.com.kw  
www.kcpc.com.kw

### Mass International Co.LLC (OMAN)

P.O. BOX 2204, Ruwi, 112 Sultanate of Oman  
Tel : +968 24704808 / 09  
Fax: +968 24703546  
massint@omantel.net.om  
www.kcpc.com.kw

## SUBSIDIARIES

### NATCON (Lebanon)

P.O.Box : 40086 ,Baabda - Lebanon  
Tel : +961 5955905 / 5954953  
Fax: +961 5452765  
info@natconcontracting.com  
www.natconcontracting.com

### NECON FZCO (Dubai)

P.O Box 293530 Dubai, UAE  
Tel : +971 4 7017149  
Fax: +971 4 7017150  
info@neconme.com  
www.neconme.com

### NEW ERA CONTROLS W.L.L (Qatar)

P.O.Box 19951, Doha Qatar  
Tel : +974 4786373 / 4  
Fax: +974 4784324  
info@neconme.com  
www.neconme.com

### NECON CONTROLS Gen.Trad. and Cont. W.I.I (Kuwait)

P.O.Box 842, Farwaniya 8000, Kuwait  
Tel : +965 24675864 / 24673752 / 24340679  
Fax: +965 24673808 / 24339528  
info@neconme.com  
www.neconme.com





P.O. Box: 3404 Safat 13035 Kuwait  
Tel: +965 2246 6650 ■ Fax: +965 2245 1411  
E-mail: [kcpc@kcpc.com.kw](mailto:kcpc@kcpc.com.kw)  
[www.kcpc.com.kw](http://www.kcpc.com.kw)