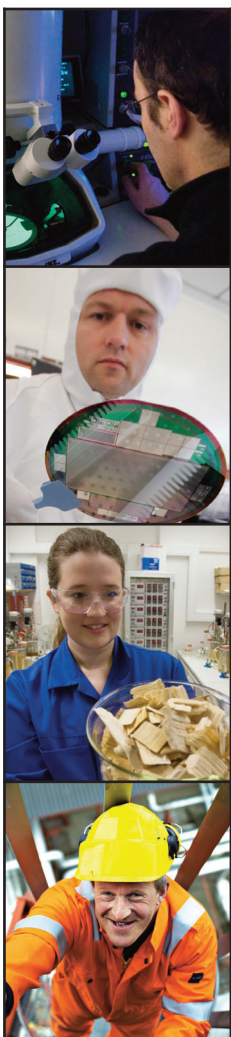


SINTEF is the largest independent research organisation in Scandinavia. We create value through knowledge generation, research and innovation, and develop technological solutions that are brought into practical use.

This is SINTEF



SINTEF is a broadly based, multidisciplinary research group with international top-level expertise in technology, medicine and the social sciences. Our aim is to become the most renowned research institution in Europe.

The SINTEF Group comprises the SINTEF Foundation, plus four limited companies and SINTEF Holding. We are a competitive research group with significant potential to make a positive contribution to the development of society at regional, national and international level.

SINTEF is a non-commercial organisation. The profits of our contract research projects are invested in new research, scientific equipment and competence development.

Key figures

At the turn of the year, the SINTEF Group had 2123 employees from 67 different countries, who generated new knowledge worth NOK 2.8 billion in the course of 2009.

Contracts for industry and the private sector and project funding provided by the Research Council of Norway account for more than 90 % of our income. Around eight percent takes the form of basic grants from the Research Council.

Partners in cooperation

SINTEF operates in partnership with the Norwegian University of Science and Technology (NTNU) in Trondheim, and collaborates with the University of Oslo. NTNU personnel work on SINTEF projects, while many SINTEF staff teach at NTNU. Our collaboration involves the extensive joint use of labora-

tories and equipment, and more than 500 people are employed by both NTNU and SINTEF.

International activity

In 2009, 15 percent of our turnover was derived from international contracts. About one third of our international turnover comes from the EU's research programmes. We give these high priority, because we believe that it is important to participate in multinational knowledge-generation efforts, and because such projects give us access to interesting networks.

The remainder of our international turnover comes from contract re-search projects performed on behalf of overseas clients. Our ambition is to grow in the international R & D market, and for this reason we are investing in areas in which we are particularly strong: oil and gas, energy and the environment, materials technology and marine technology.

Commercial spin-offs

SINTEF also acts as an incubator for new industrial companies. In 2009, we were involved in the commercialisation of six different SINTEF technologies, through licensing agreements and the establishment of new companies. We are actively involved owners of our start-up companies, and we help them to continue to develop. Selling our shareholdings in successful spin-offs realises liquid assets that we subsequently invest in the generation of new knowledge. Nevertheless, the most important part of our work is the development of existing industrial activity. Every year, SINTEF supports the ongoing development of some 2000 Norwegian and foreign companies through its research and development activities.

Vision

- Technology for a better society

Core values

- Honesty • Generosity • Courage • Solidarity

Role

- To create value through knowledge generation, research and innovation
 - to develop technological solutions that are brought into practical use
 - to act as an R & D partner for industry and the public sector
 - to develop new industrial companies
- Sustainable development
- Develop and operate research laboratories
- Offer premises for social debate and policy design

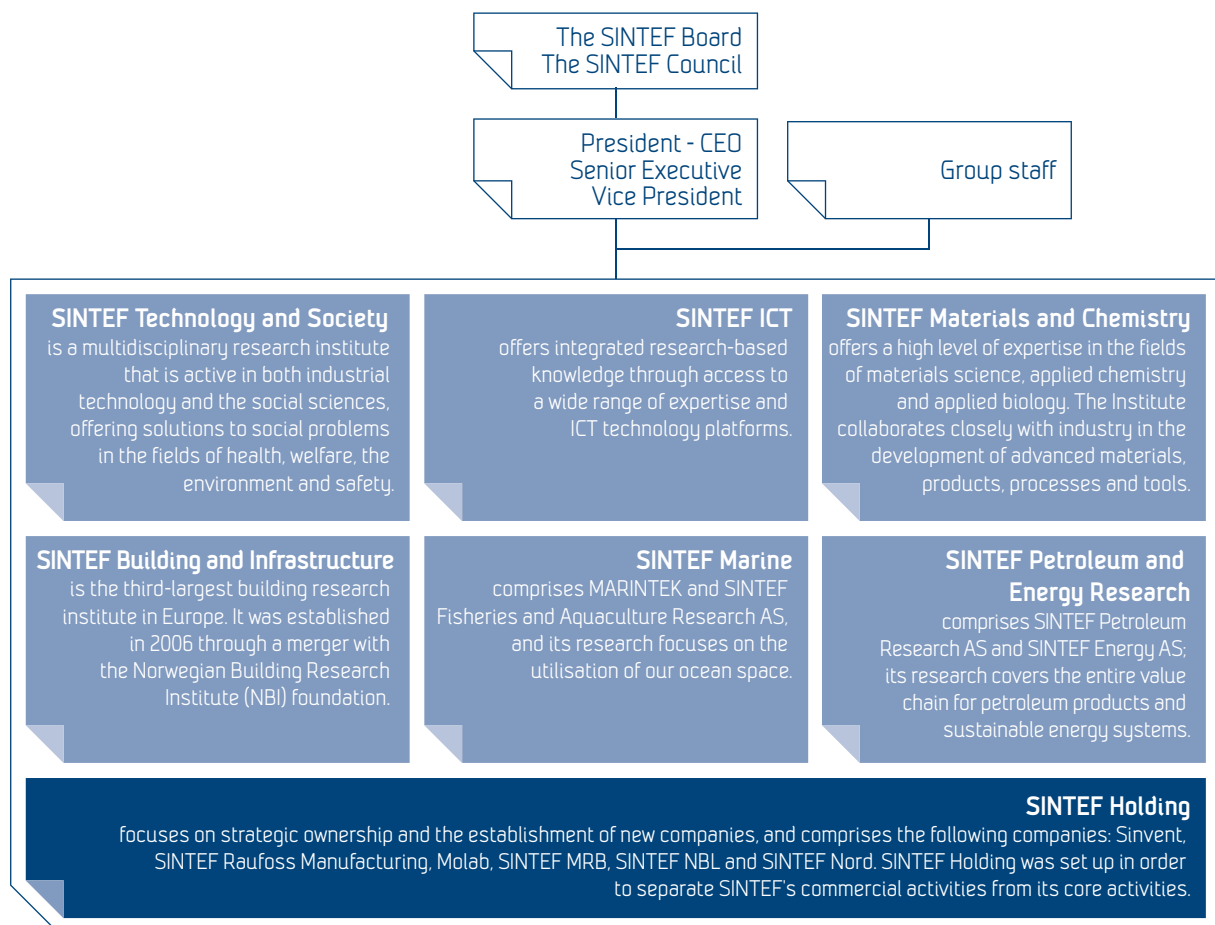
Special nature

- We are a multidisciplinary research group with an internationally high level of expertise in a number of chosen areas.
- We collaborate closely with universities, the authorities and industry.
- We have the ability to perceive potential, and to develop and create successful products and services for our clients and partners.
- We successfully unite research and commercial cultures.
- We accept our responsibility vis-à-vis society and maintain a high ethical standard throughout our range of activities.

Our principle objective

- SINTEF intends to become Europe's most highly respected contract research organisation.

Our organisation



Contact

Trondheim Oslo
 SINTEF, PO box 4760 Sluppen, NO-7465 Trondheim SINTEF, PO box. 124 Blindern, NO-0314 Oslo
 Tel: +47 73 59 30 00*, Fax: +47 73 59 33 50 Tel: +47 22 06 73 00, Fax: +47 22 06 73 50

Email: info@sintef.no
www.sintef.com